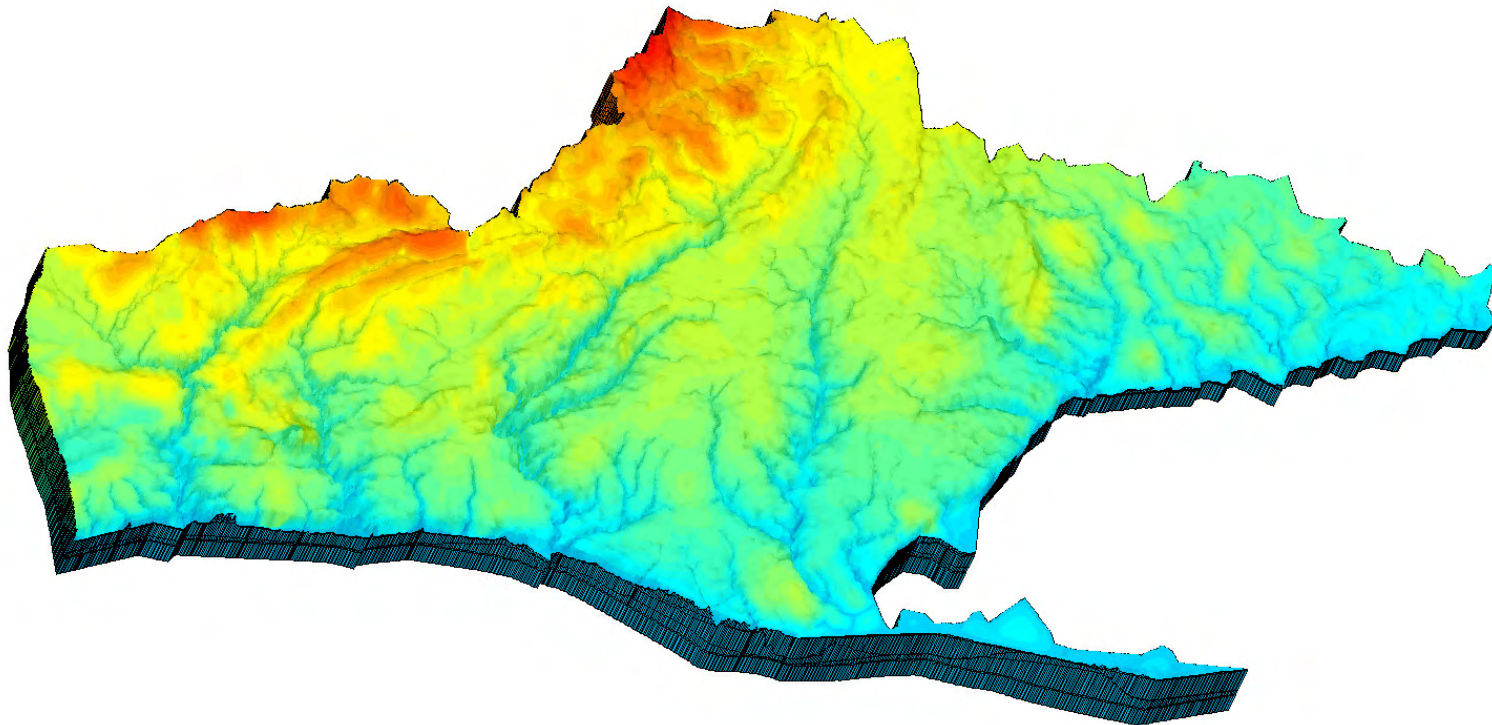




Long Point Region, Catfish Creek and Kettle Creek Tier 2 Water Quantity Stress Assessment

Map Booklet

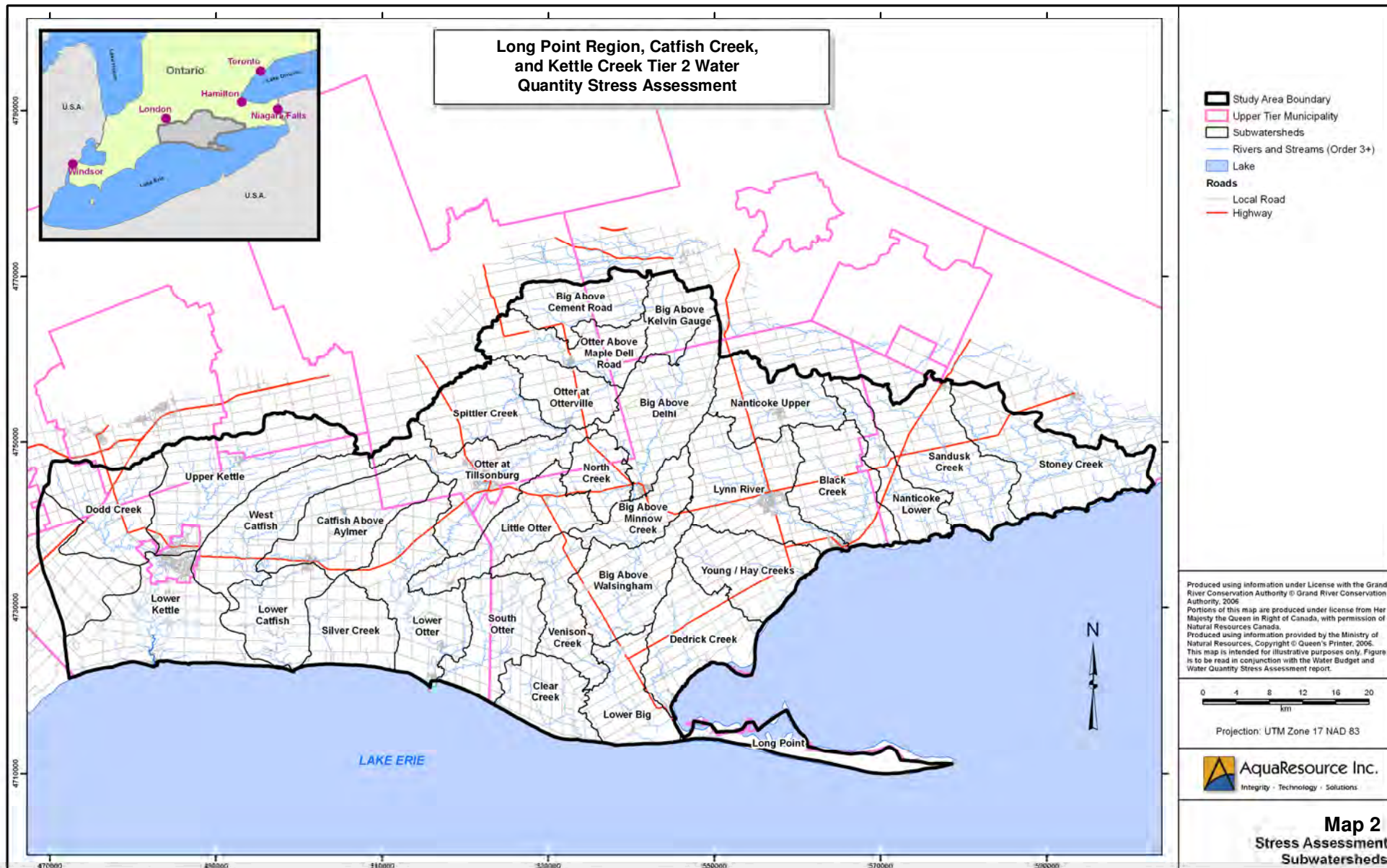
May 2009





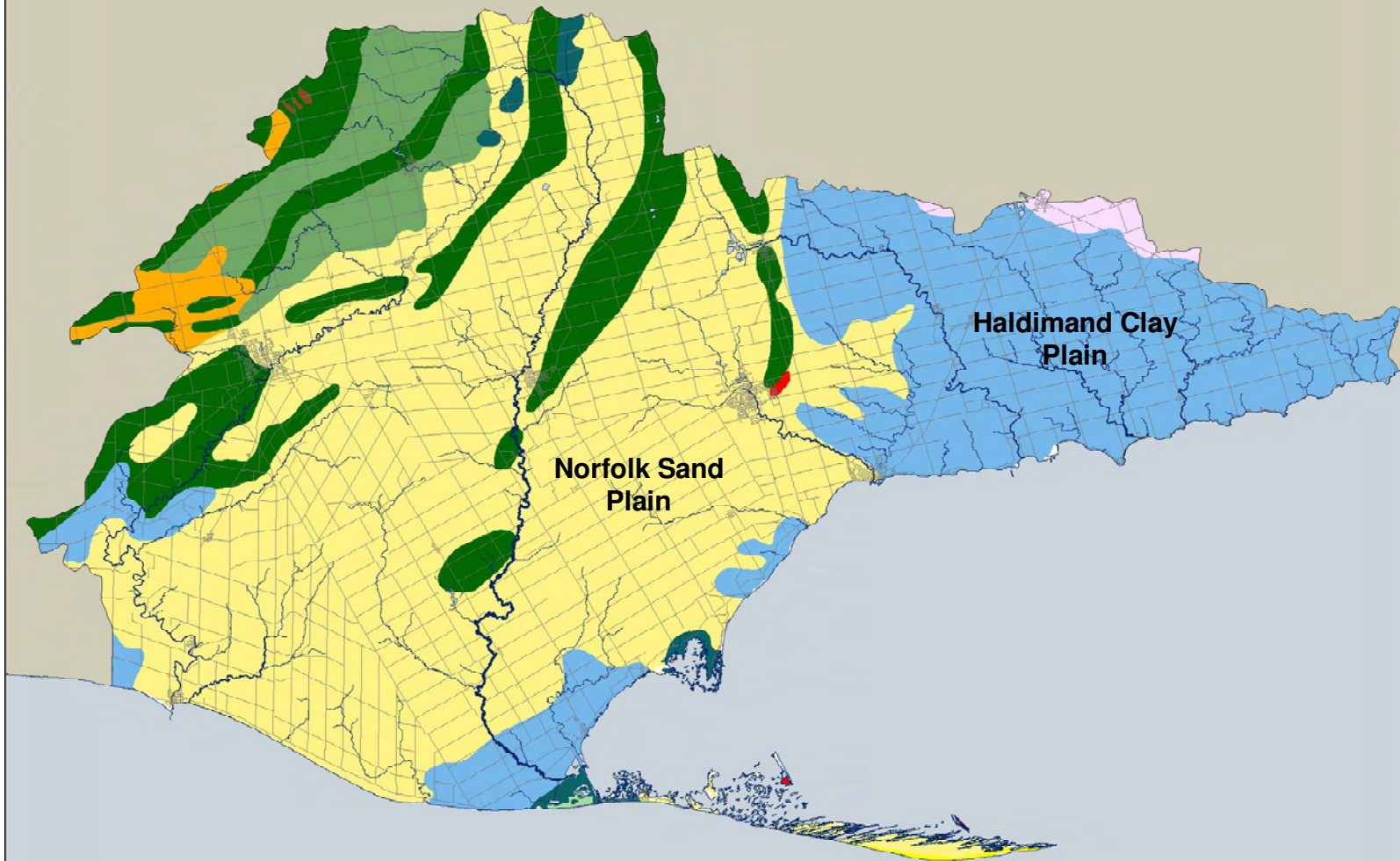
Produced using information under License with the Grand River Conservation Authority © Grand River Conservation Authority, 2007.

Produced using information provided by the Ministry of Natural Resources, Copyright © Queen's Printer, 2007.



Long Point Region Conservation Authority

Physiography



Physiographic Features

- Beaches
- Clay Plain
- Drumlins
- Limestone Plain
- Peat and Muck
- Sand Plain
- Spillway
- Till Moraine
- Till Plain (drumlinized)
- Till Plain (undrumlinized)

Produced using information under License with the Grand River Conservation Authority © Grand River Conservation Authority, 2007.

Produced using information provided by the Ministry of Natural Resources, Copyright © Queen's Printer, 2007.

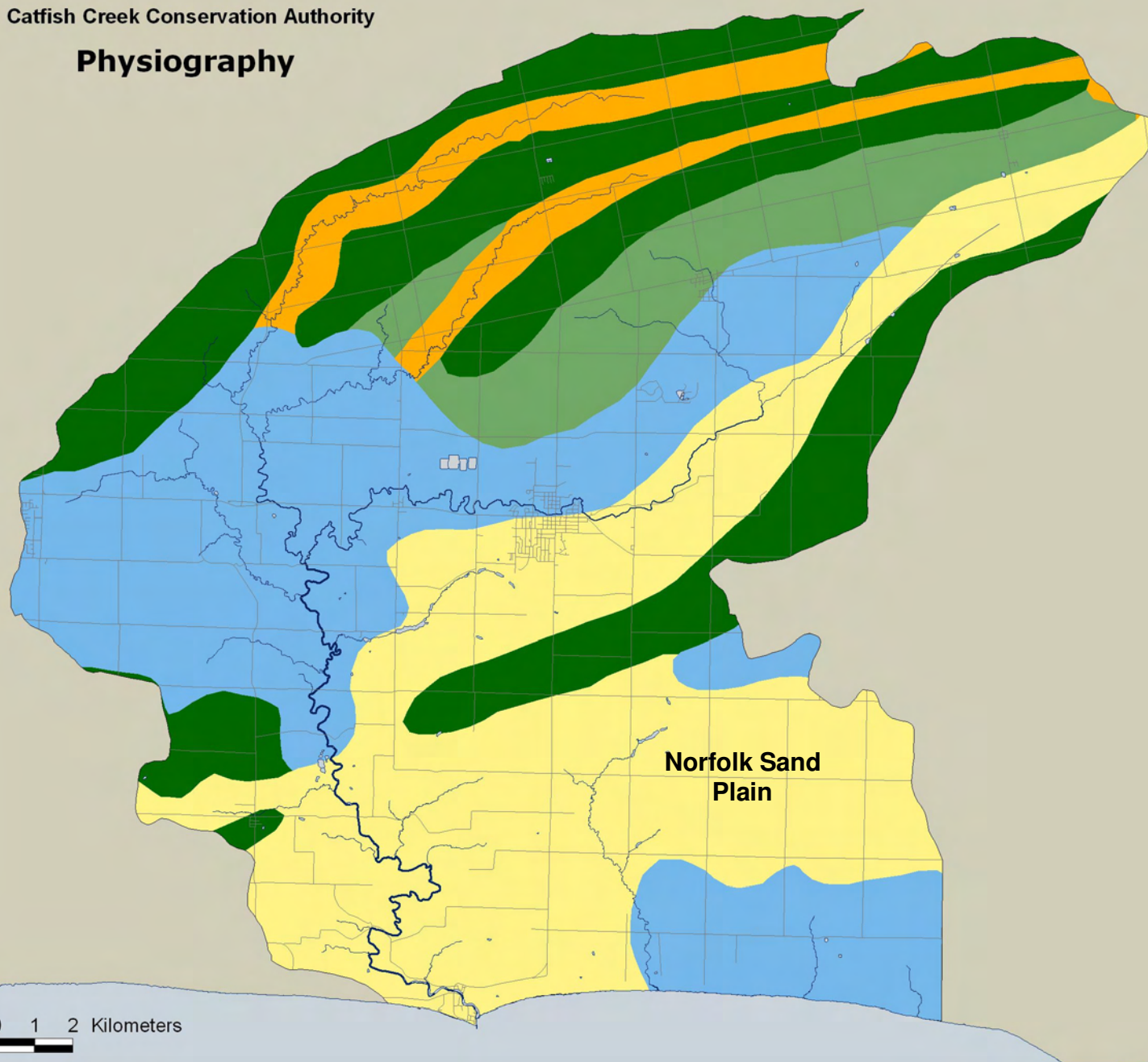
Map 3
LPRCA Physiography



3 0 3 6 Kilometers

Catfish Creek Conservation Authority

Physiography



Physiographic Features

- Clay Plain
- Sand Plain
- Spillway
- Till Moraine
- Till Plain (undrumlinized)

Produced using information under License with the Grand River Conservation Authority © Grand River Conservation Authority, 2007.

Produced using information provided by the Ministry of Natural Resources, Copyright © Queen's Printer, 2007.

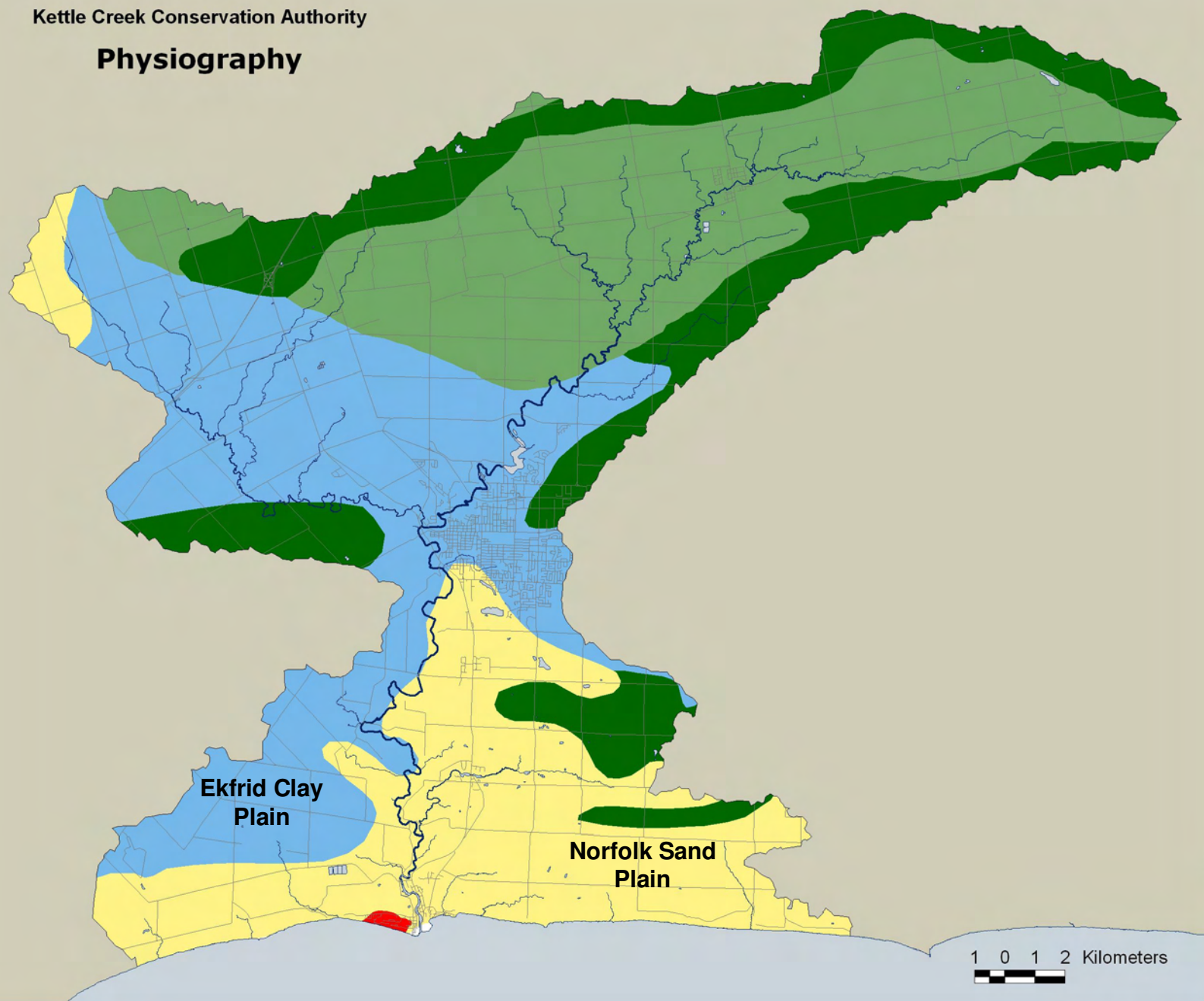
Map 4
CCCA Physiography



1 0 1 2 Kilometers

Kettle Creek Conservation Authority

Physiography



Physiographic Features

- Beaches
- Clay Plain
- Sand Plain
- Till Moraine
- Till Plain (undrumlinized)

Produced using information under License
with the Grand River Conservation Authority
© Grand River Conservation Authority, 2007.

Produced using information provided by the
Ministry of Natural Resources, Copyright ©
Queen's Printer, 2007.

Map 5
KCCA Physiography



1 0 1 2 Kilometers

Long Point Region Conservation Authority
Long Point Region Watershed

-  Lake/River
-  Stream
-  Road
-  Municipal Boundary
-  Long Point Region Watershed



Produced using information under License
 with the Grand River Conservation
 Authority © Grand River Conservation
 Authority, 2007.

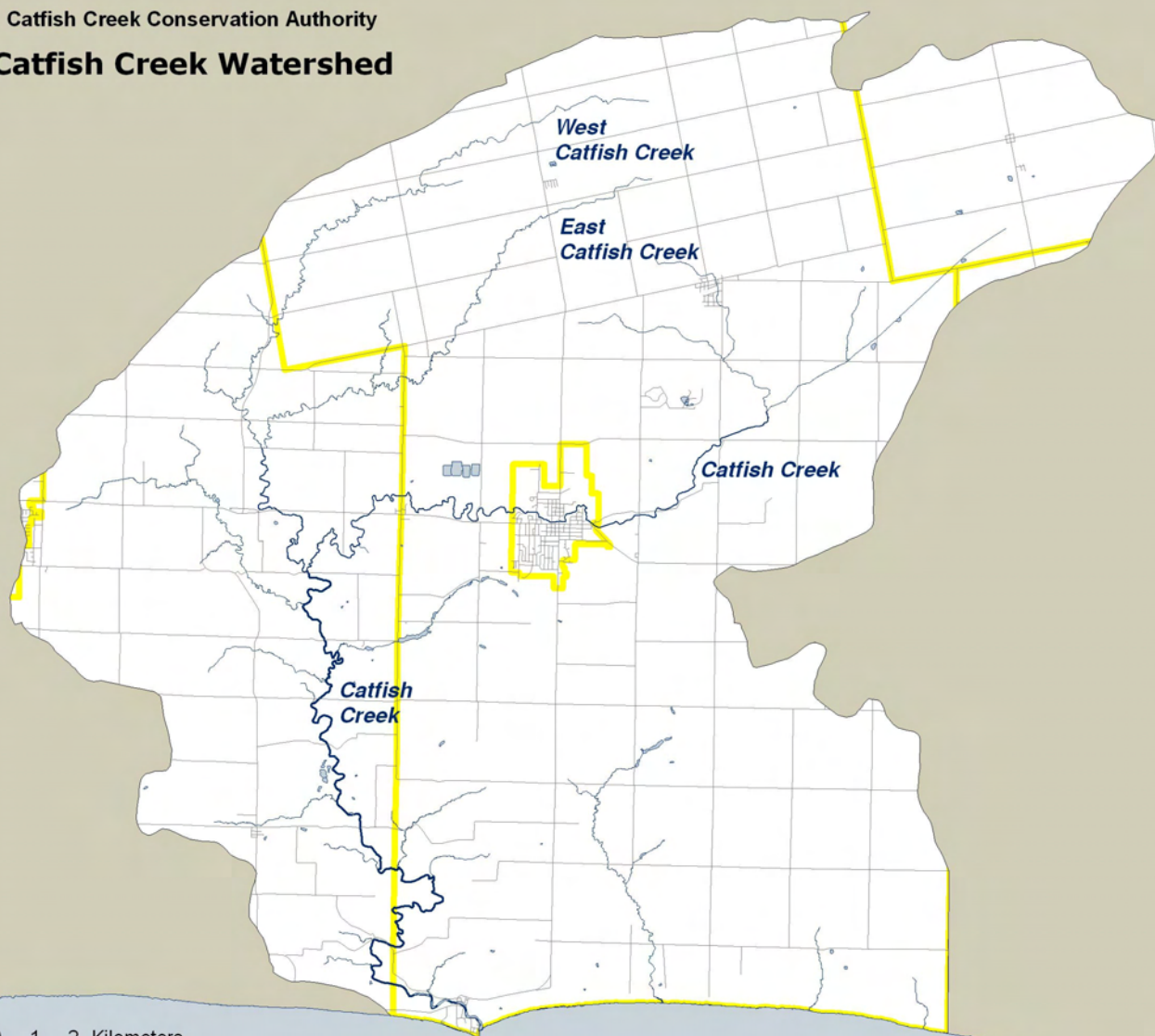
Produced using information provided by
 the Ministry of Natural Resources,
 Copyright © Queen's Printer, 2007.

Map 6
Long Point Region
Conservation Authority

3 0 3 6 Kilometers



Catfish Creek Conservation Authority
Catfish Creek Watershed




-  Lake/River
-  Stream
-  Road
-  Municipal Boundary
-  Catfish Creek Watershed

Produced using information under License
with the Grand River Conservation
Authority © Grand River Conservation
Authority, 2007.

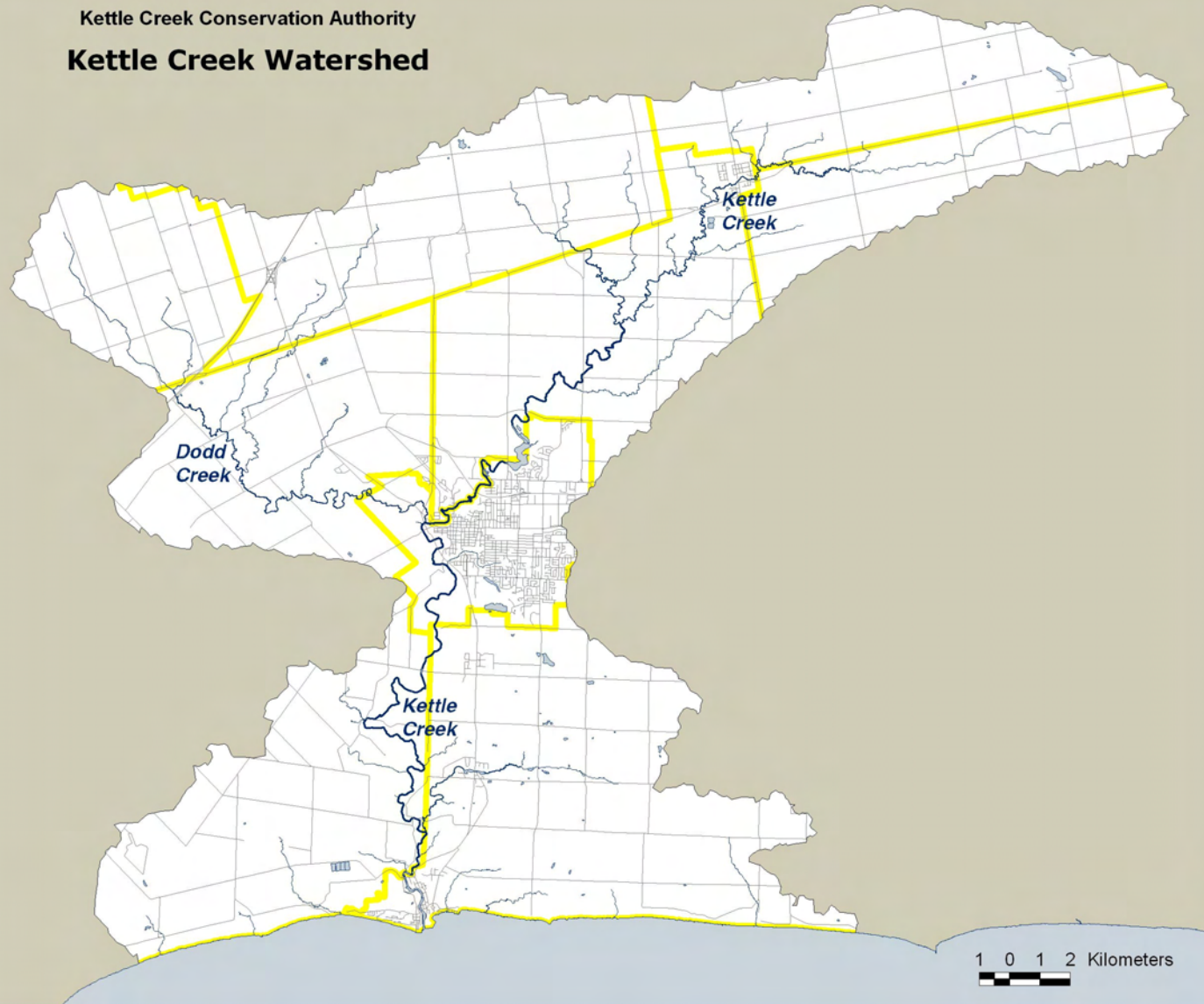
Produced using information provided by the
Ministry of Natural Resources, Copyright ©
Queen's Printer, 2007.

Map 7
Catfish Creek
Conservation Authority



1 0 1 2 Kilometers


Kettle Creek Conservation Authority
Kettle Creek Watershed



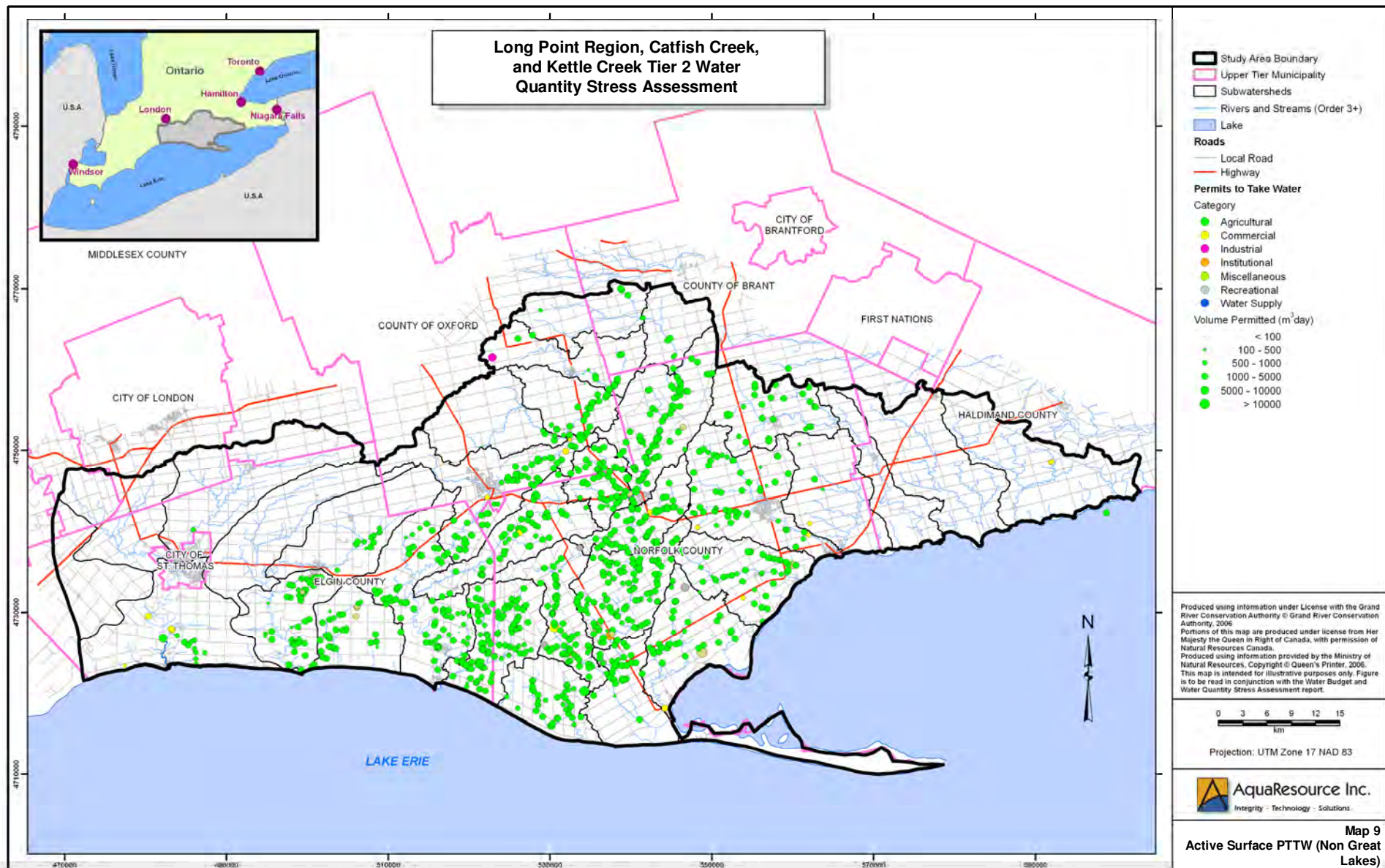
- Lake/River
- Stream
- Road
- Municipal Boundary
- Kettle Creek Watershed

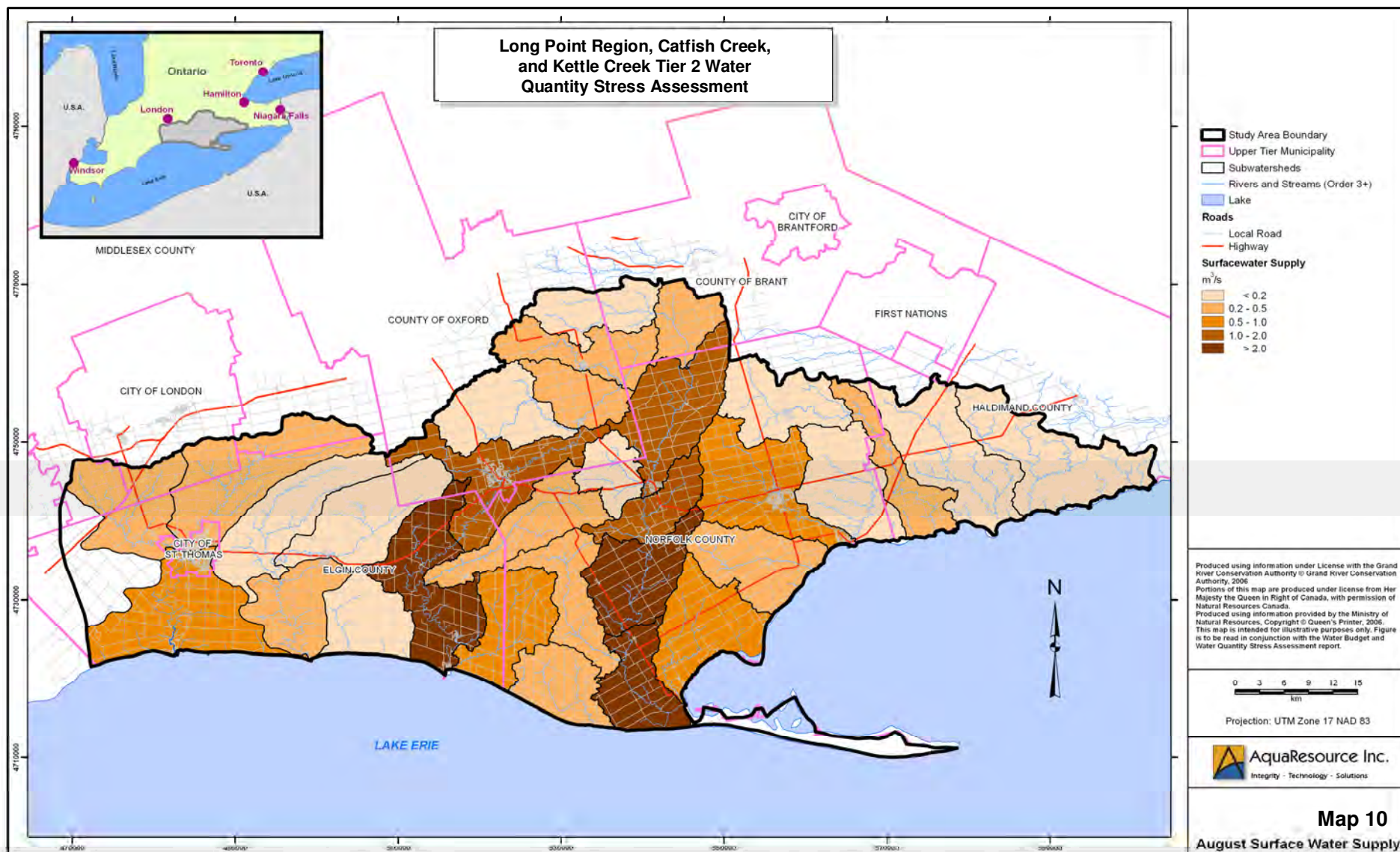
Produced using information under License
with the Grand River Conservation Authority
© Grand River Conservation Authority, 2007.
Produced using information provided by the
Ministry of Natural Resources, Copyright ©
Queen's Printer, 2007.

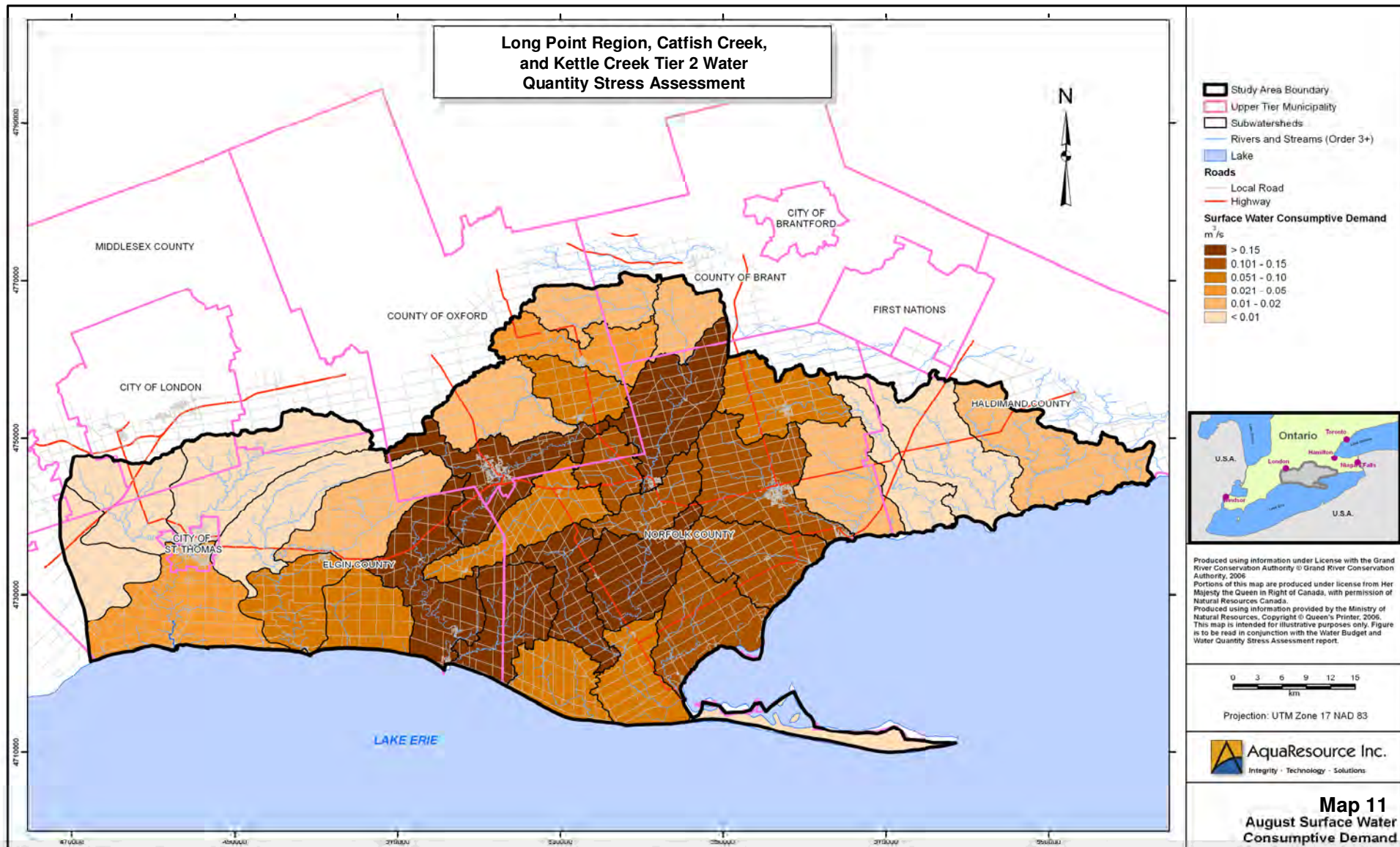
Map 8
Kettle Creek
Conservation Authority

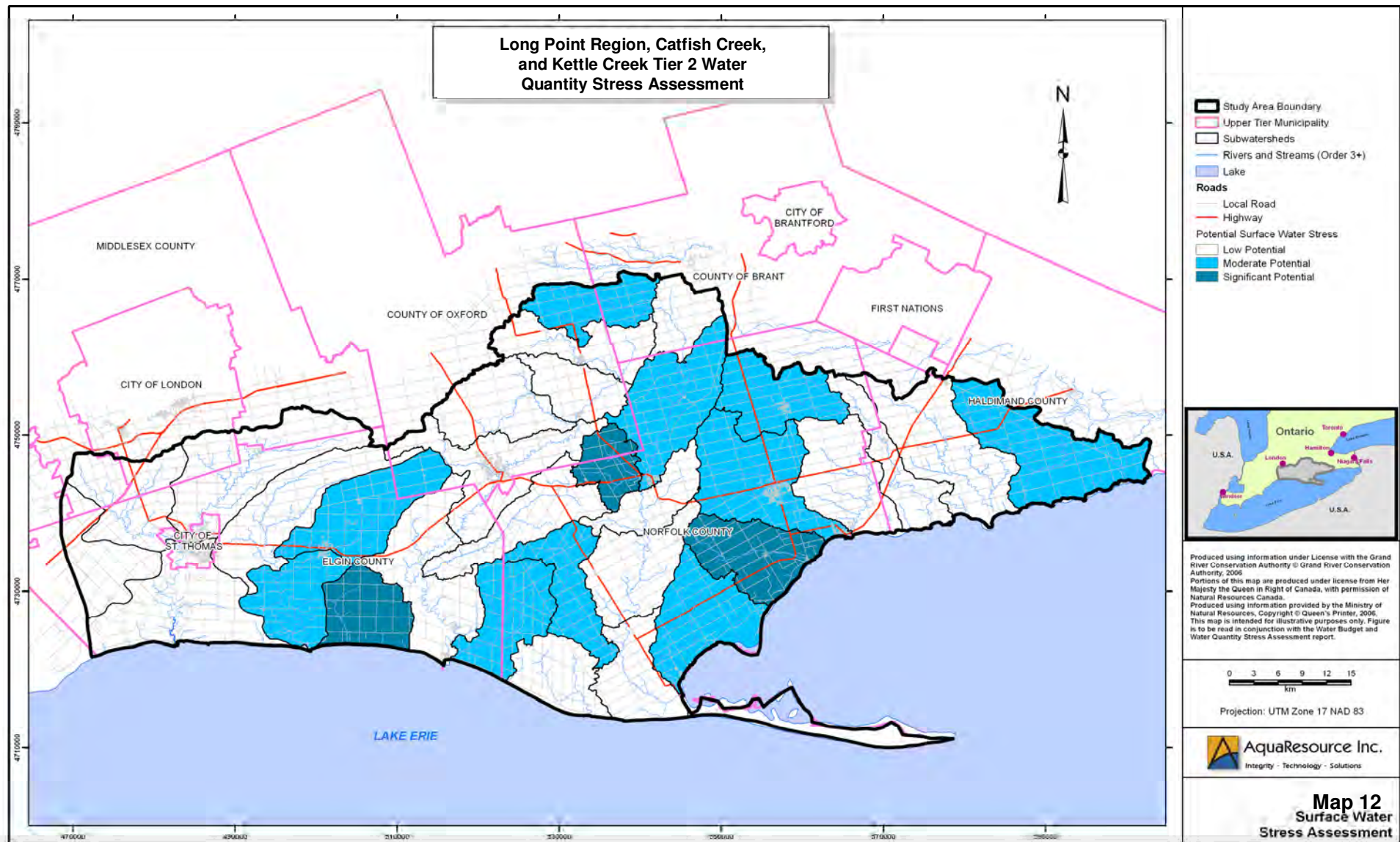
1 0 1 2 Kilometers









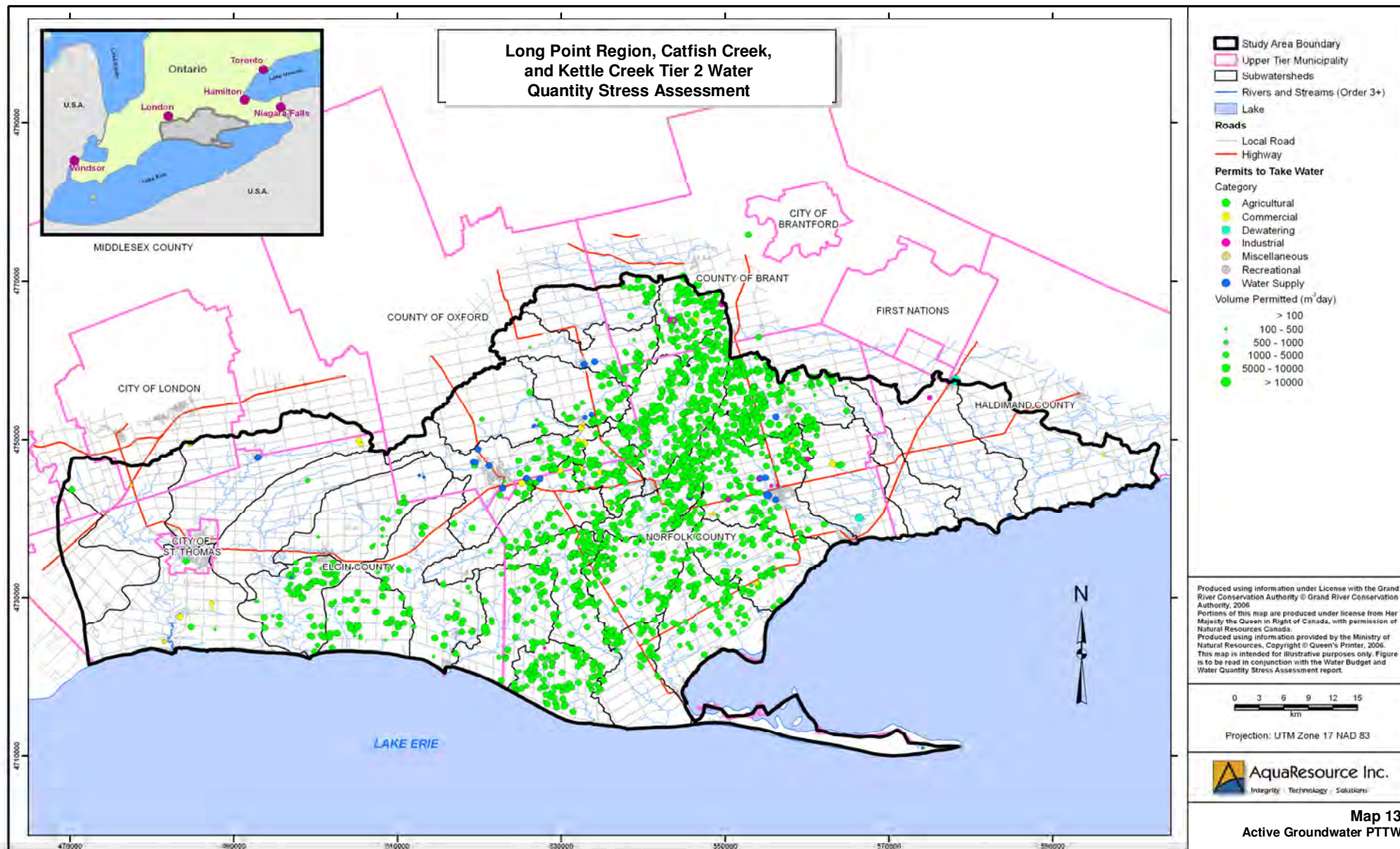


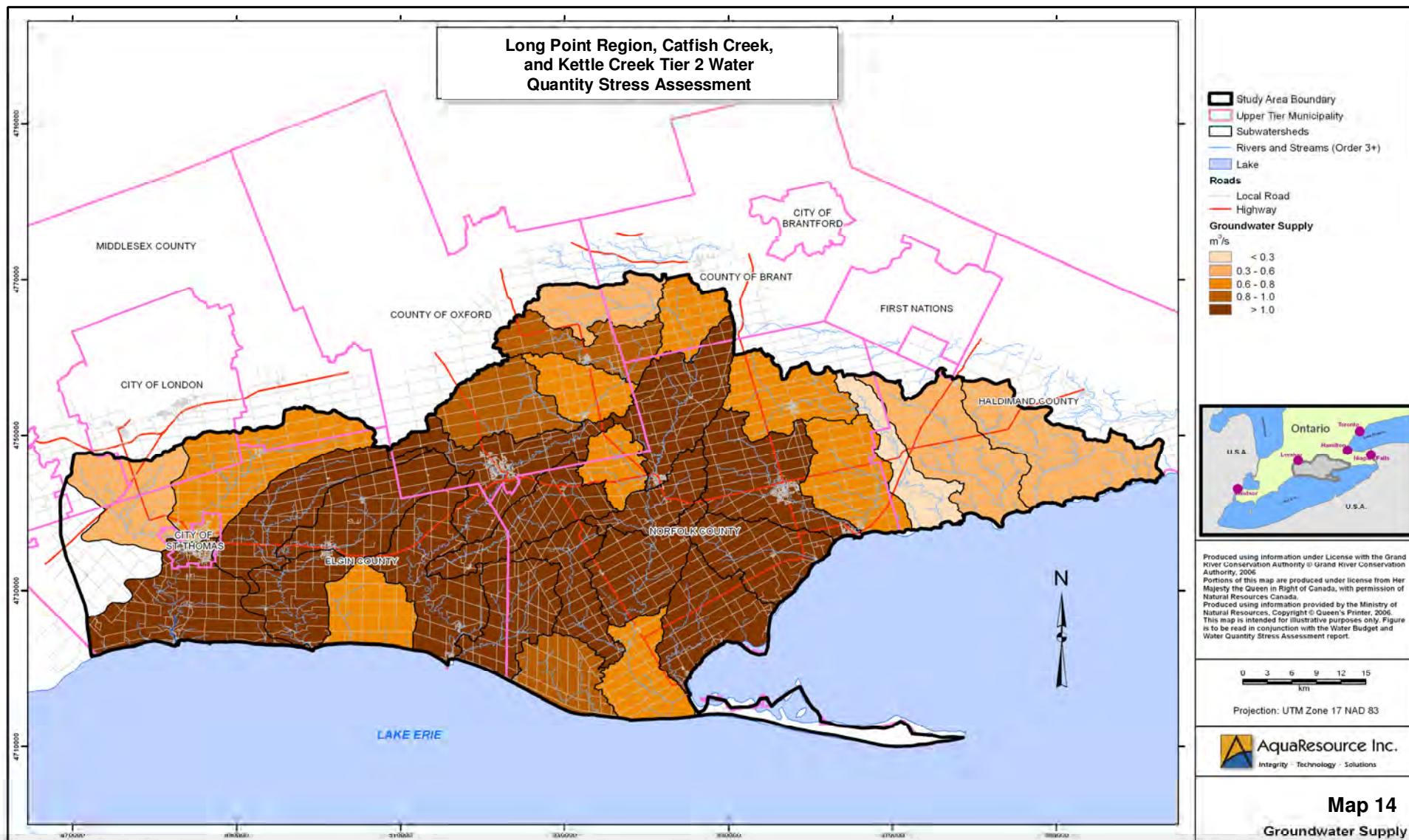
Filename: SWSStressAssessment-02.mxd

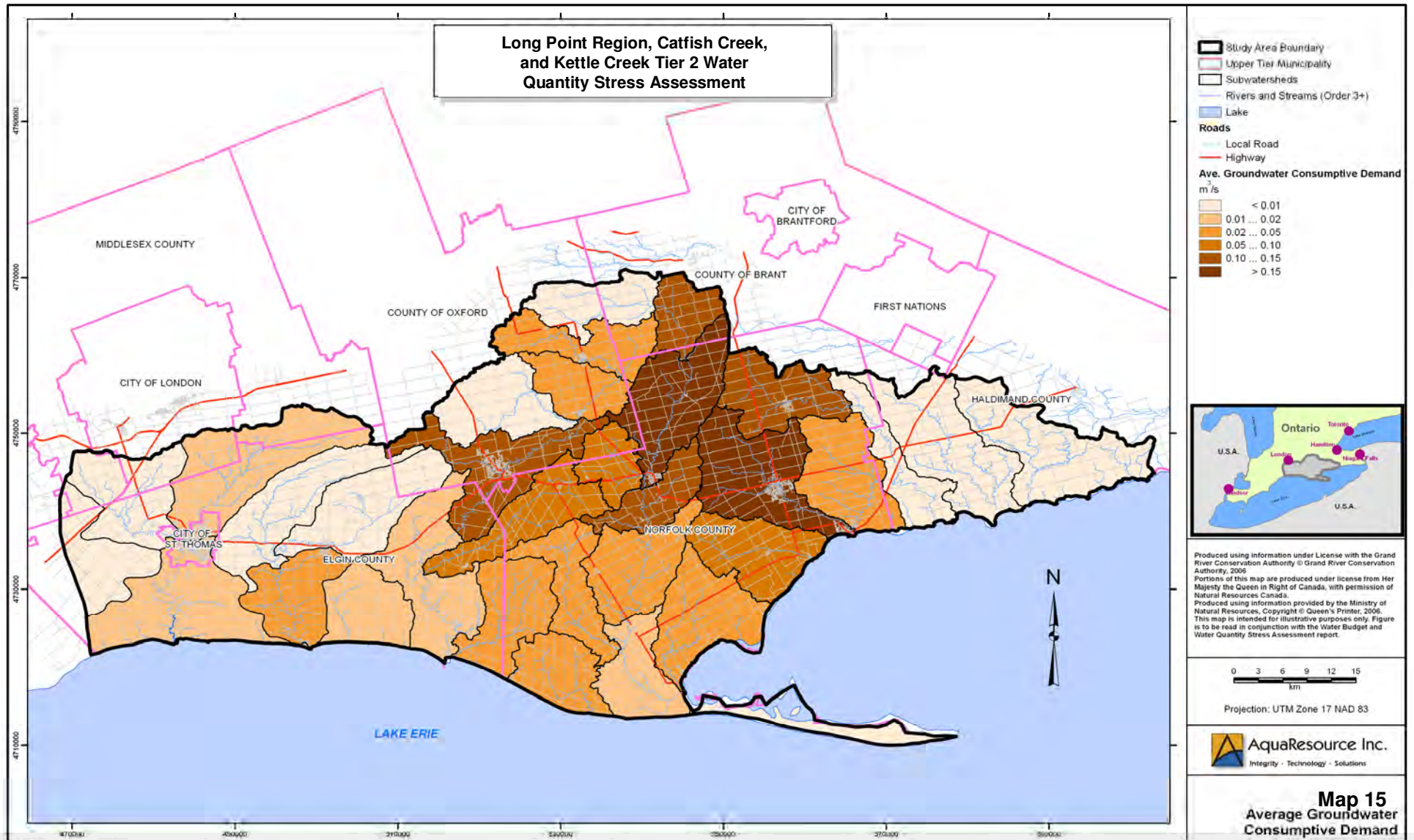
Date: March 2009

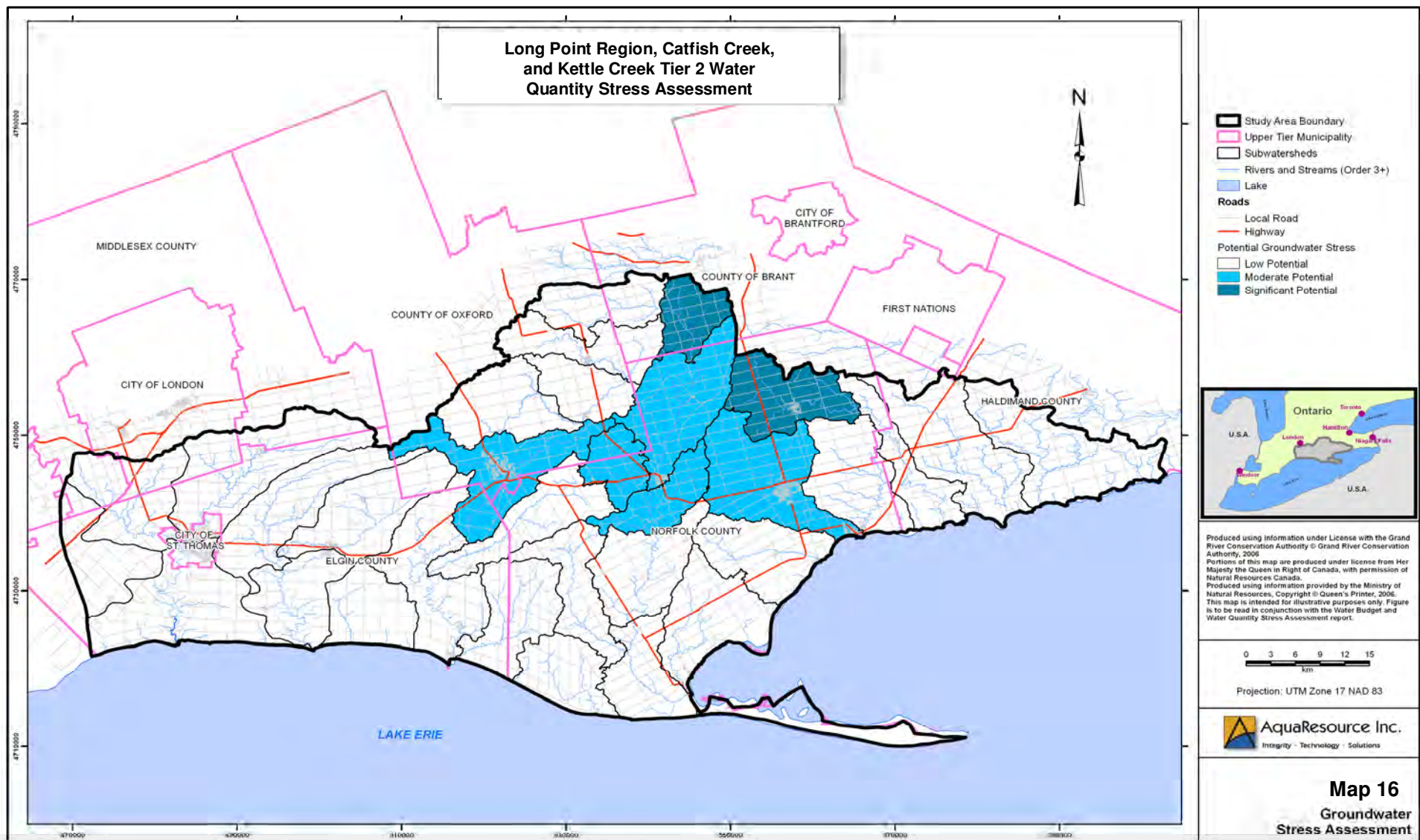
AquaResource Project 2007008 LongPoint

"The Stress Assessment depicted on this map has been carried out as a screening tool to determine where additional detailed studies should be carried out to assess the risk to municipal drinking water supplies from a water quantity perspective. The classification shown on this map does not indicate actual hydrologic stress in a watershed."







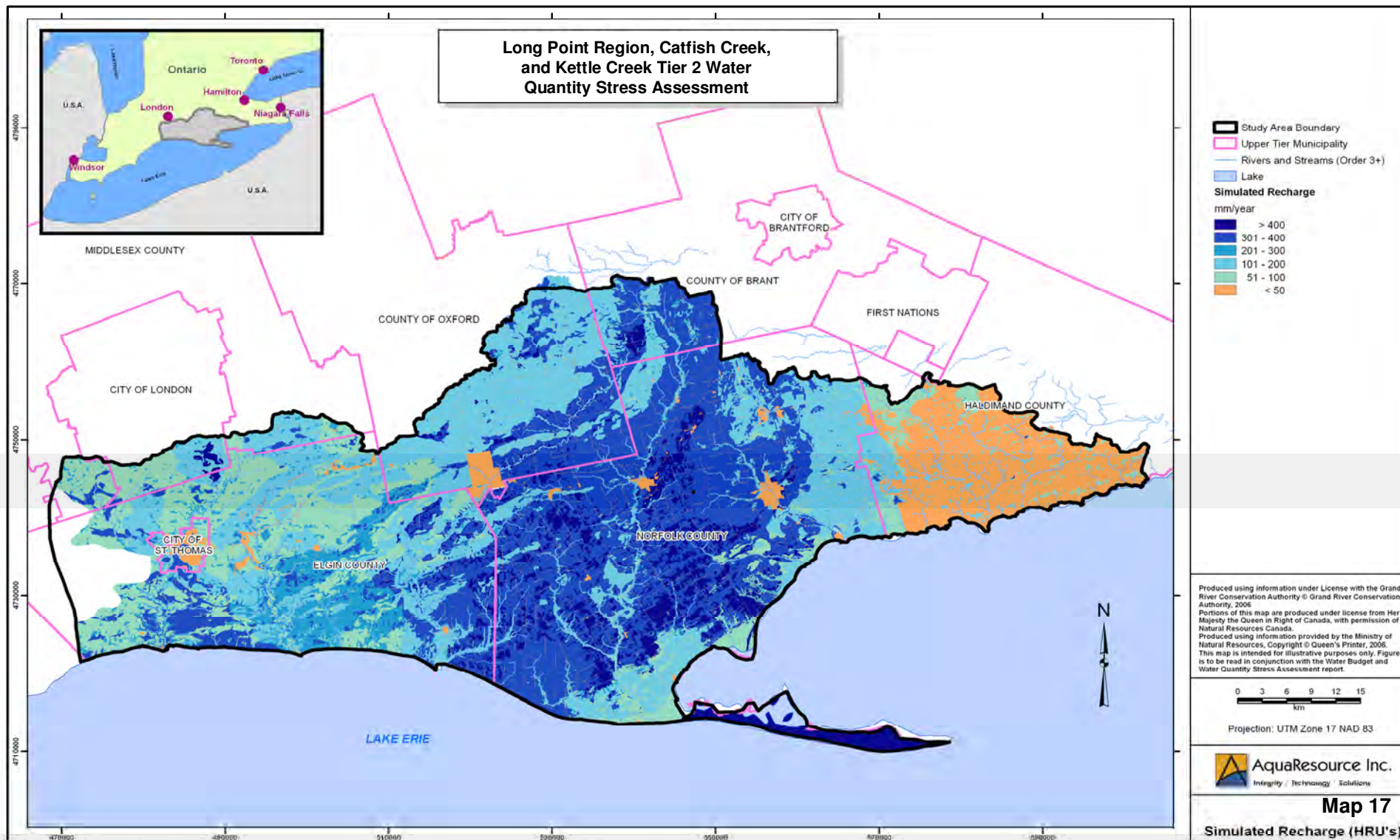


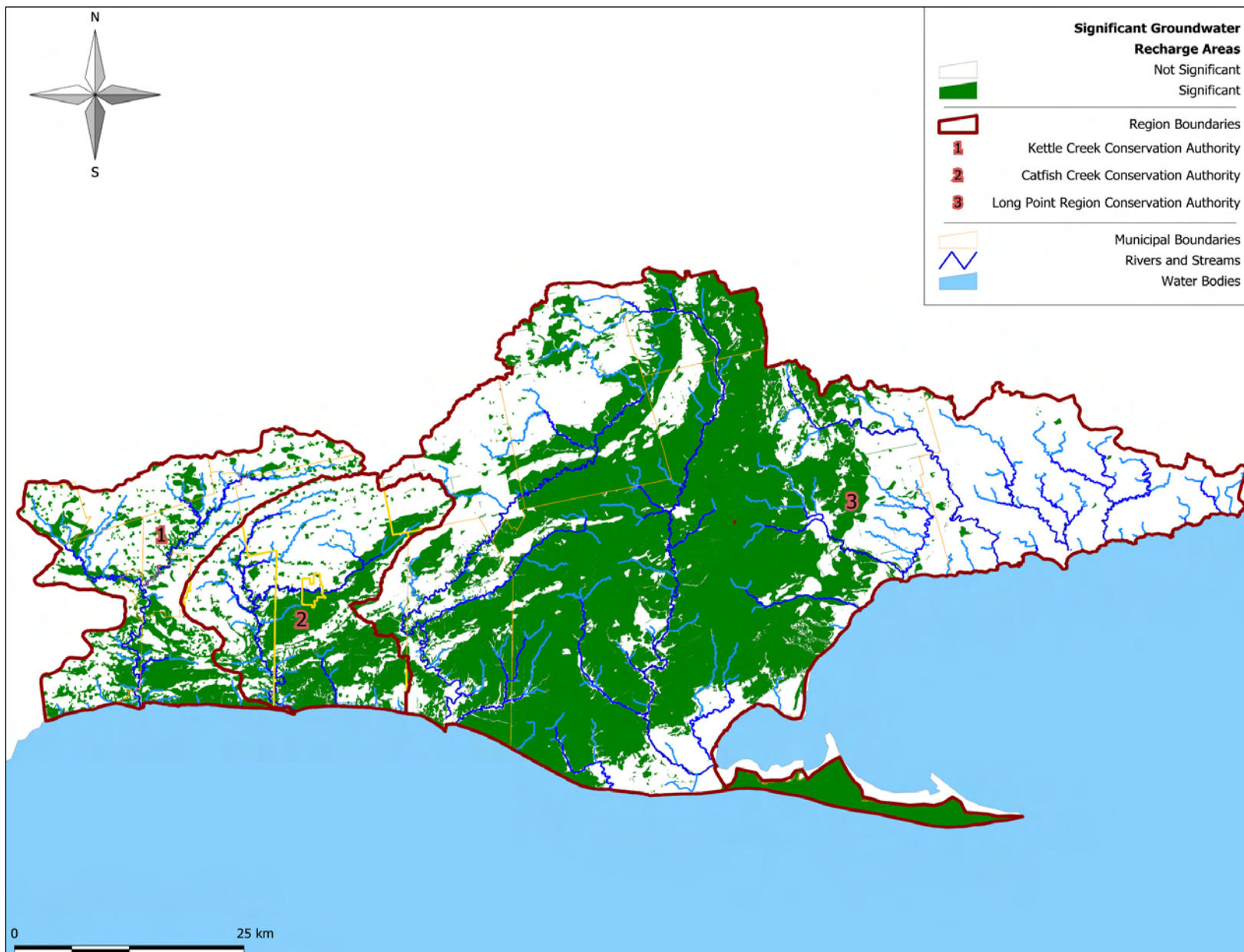
Filename: GWStressAssessment-(02).mxd

Date: March 2009

AquaResource Project 2007008 LongPoint

"The Stress Assessment depicted on this map has been carried out as a screening tool to determine where additional detailed studies should be carried out to assess the risk to municipal drinking water supplies from a water quantity perspective. The classification shown on this map does not indicate actual hydrologic stress in a watershed."

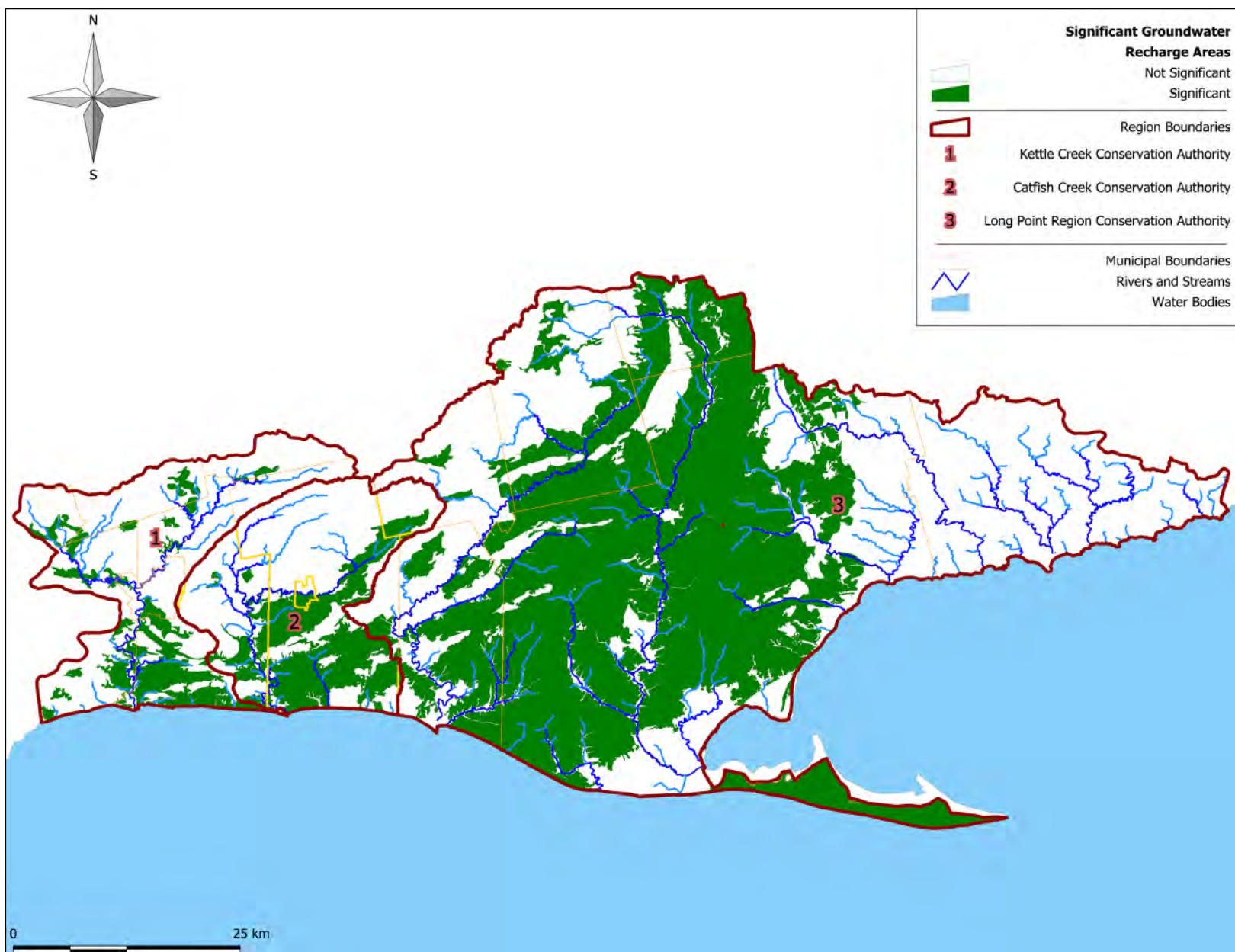




Produced using information under License with the Grand River Conservation Authority © Grand River Conservation Authority, 2007.

Produced using information provided by the Ministry of Natural Resources, Copyright © Queen's Printer, 2007.

Map 18
Significant
Groundwater
Recharge Areas



Produced using information under
License with the Grand River
Conservation Authority © Grand River
Conservation Authority, 2007.

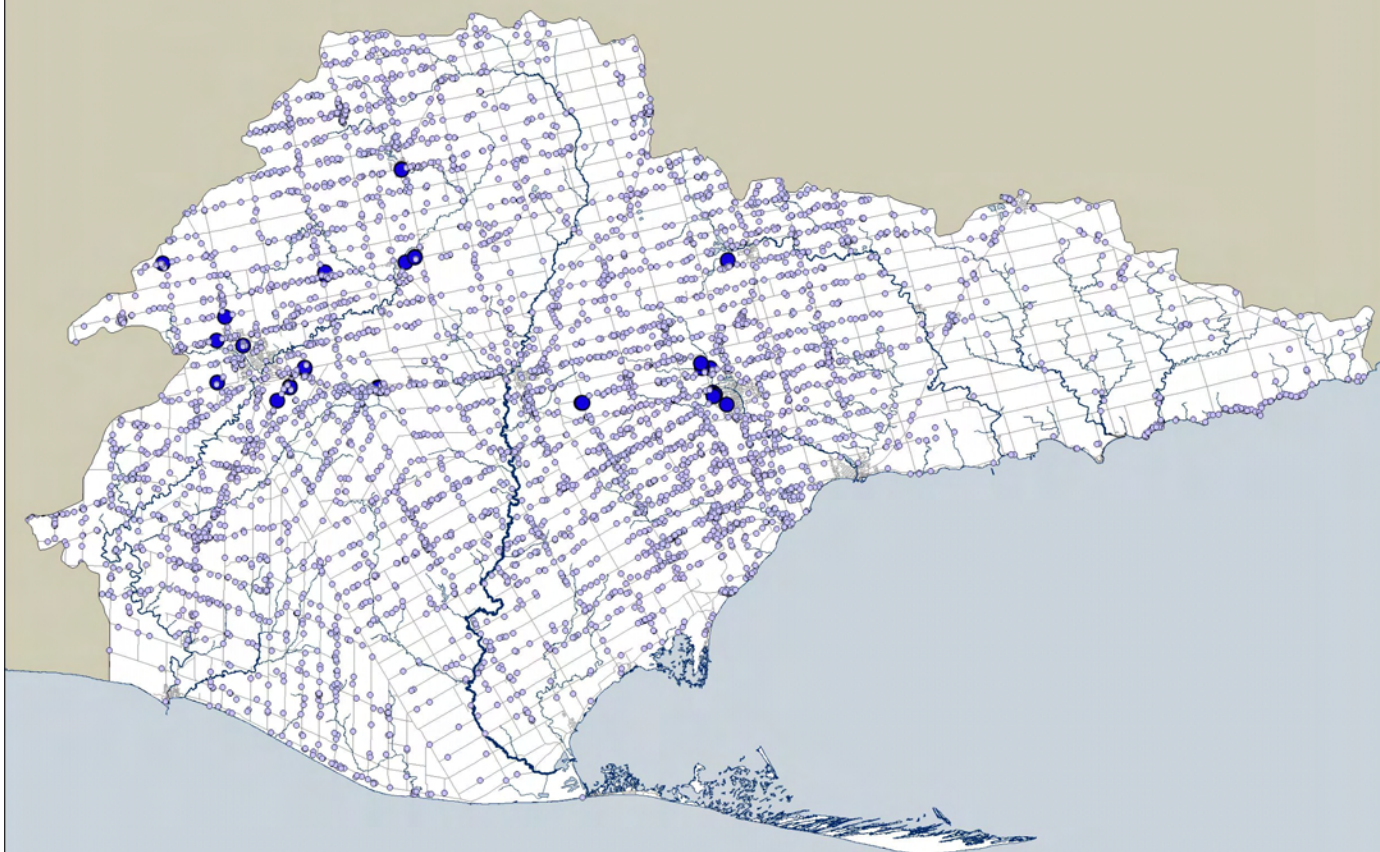
Produced using information provided by
the Ministry of Natural Resources,
Copyright © Queen's Printer, 2007.

Map 19
Significant
Groundwater
Recharge Areas
with 1 km² Filter

Long Point Region Conservation Authority

Groundwater Use

- Municipal Well
- Domestic Well



Produced using information under
License with the Grand River
Conservation Authority © Grand River
Conservation Authority, 2007.

Produced using information provided
by the Ministry of Natural Resources,
Copyright © Queen's Printer, 2007.

Produced using information provided
by the Ministry of the Environment,
Copyright © Queen's Printer, 2003.

Map 20
LPRCA Municipal and
Domestic
Groundwater Wells



3 0 3 6 Kilometers

Catfish Creek Conservation Authority

Groundwater Use

- Municipal Well
- Domestic Well

Produced using information under License with the Grand River Conservation Authority © Grand River Conservation Authority, 2007.

Produced using information provided by the Ministry of Natural Resources, Copyright © Queen's Printer, 2007.

Produced using information provided by the Ministry of the Environment, Copyright © Queen's Printer, 2005.

Map 21
CCCA Municipal and
Domestic
Groundwater Wells

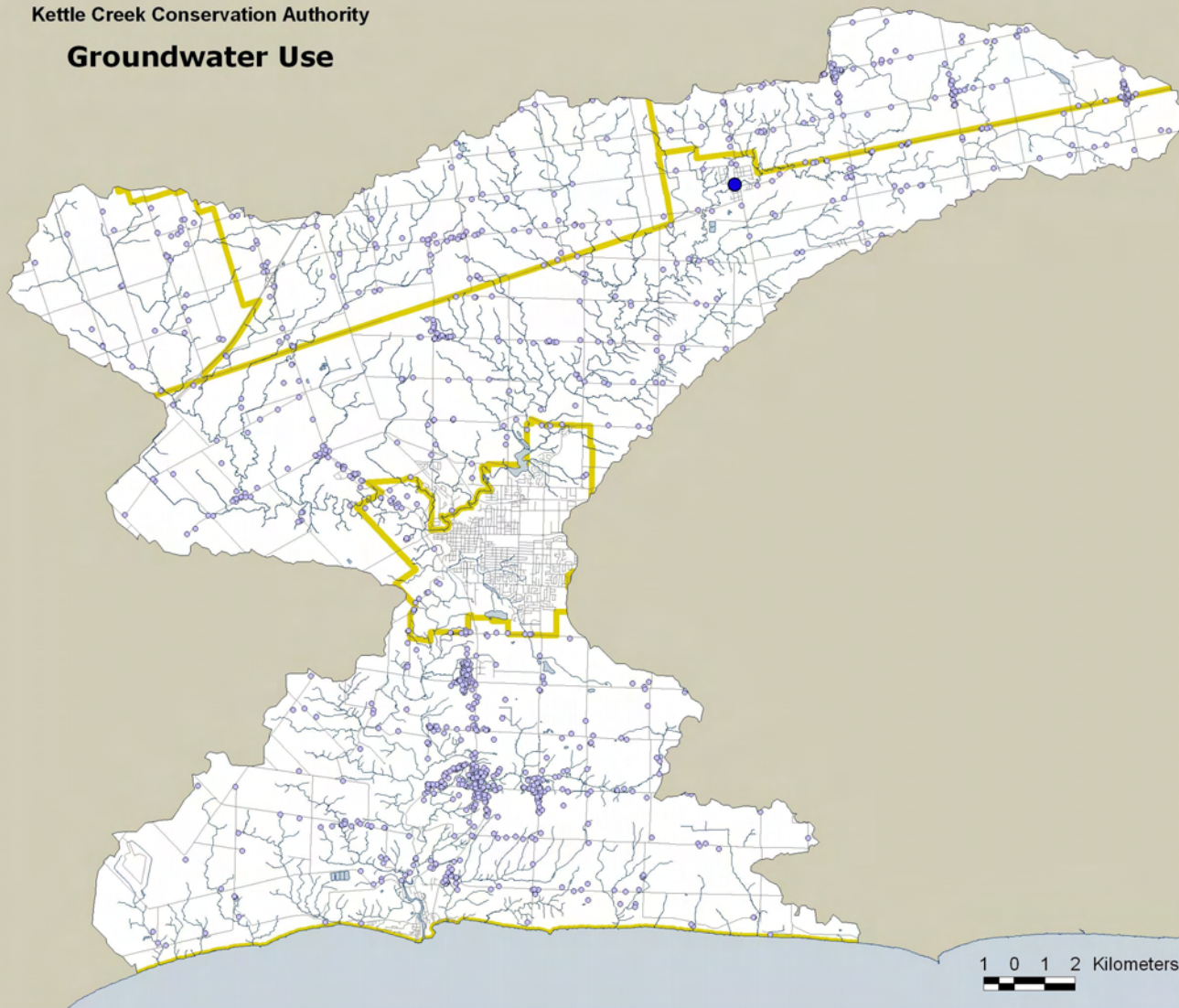


1 0 1 2 Kilometers



Kettle Creek Conservation Authority

Groundwater Use



- Municipal Well
- Domestic Well

Produced using information under
License with the Grand River
Conservation Authority © Grand River
Conservation Authority, 2007.

Produced using information provided
by the Ministry of Natural Resources,
Copyright © Queen's Printer, 2007.

Produced using information provided
by the Ministry of the Environment,
Copyright © Queen's Printer, 2005.

Map 22
KCCA Municipal and
Domestic
Groundwater Wells



1 0 1 2 Kilometers