

TABLE OF CONTENTS

8.0	CITY OF GUELPH	8-1
8.1	Definitions	8-1
8.2	City of Guelph Source Protection Plan Policies	8-1
8.3	Transition Policies	8-7
8.4	Policies Addressing Prescribed Drinking Water Threats.....	8-8
8.5	Appendix A: List of Policies as per Section 34 of Regulation 287/07	8-18
8.6	Appendix B: Prescribed Instruments and Policy Summary Tables	8-20
8.7	Schedule A: City of Guelph: Guelph Waterworks Well Supply Index Map	8-23
8.8	Schedule B: City of Guelph: Guelph Waterworks Well Supply, Map A.....	8-24
8.9	Schedule C: City of Guelph: Guelph Waterworks Well Supply, Map B	8-25
8.10	Schedule D: City of Guelph: Guelph Waterworks Well Supply, Map C	8-26
8.11	Schedule E: City of Guelph: Guelph Waterworks Well Supply, Map D	8-27
8.12	Schedule F: City of Guelph: Guelph Waterworks Well Supply, Map E	8-28
8.13	Schedule G: City of Guelph: Guelph Waterworks Issue Contributing Areas (North).....	8-29
8.14	Schedule H: City of Guelph: Guelph Waterworks Issue Contributing Areas (South)	8-30

All maps Copyright © Grand River Conservation Authority, 2021. Produced using information provided by the Ministry of Northern Development, Mines, Natural Resources and Forestry, Copyright © Queen's Printer, 2021.

This page left blank intentionally.

8.0 CITY OF GUELPH

The following City of Guelph policies apply to the City of Guelph water supply system located within the City of Guelph city limits as presented in the following schedules. Reference should be made to the County of Wellington and Regional Municipality of Halton policies for the portions of the City of Guelph vulnerable areas located within those municipalities.

- Schedule A City of Guelph: Guelph Waterworks Well Supply Index Map
- Schedule B City of Guelph: Guelph Waterworks Well Supply Map A
- Schedule C City of Guelph: Guelph Waterworks Well Supply Map B
- Schedule D City of Guelph: Guelph Waterworks Well Supply Map C
- Schedule E City of Guelph: Guelph Waterworks Well Supply Map D
- Schedule F City of Guelph: Guelph Waterworks Well Supply Map E
- Schedule G City of Guelph: Guelph Waterworks Issue Contributing Areas (North)
- Schedule H City of Guelph: Guelph Waterworks Issue Contributing Areas (South)

8.1 Definitions

General definitions are provided in Volume I of the Source Protection Plan or the *Clean Water Act, 2006*. Defined terms are intended to capture both the singular and plural forms of these terms.

The following definitions shall apply to the City of Guelph Source Protection Plan policies:

Conditions: Are referred to in section 15(2)(g) of the *Clean Water Act, 2006* and are identified in the Grand River Source Protection Area Assessment Report as resulting from past activities and that are significant drinking water threats.

Condition Sites: Locations where conditions are present.

Existing:

- a. An activity engaged in at a particular location in a vulnerable area on the effective date of this Source Protection Plan; or
- b. When an activity was engaged in at a particular location within a vulnerable area at any time within five (5) years prior to the effective date of this Source Protection Plan but not on the day before the effective date of this Source Protection Plan and such activity has been resumed within 5 years following the effective date of this Source Protection Plan; or
- c. A replacement facility or structure of similar size and capacity to service an existing activity.

Future or New: An activity that is not an existing activity as defined within the City of Guelph Source Protection Plan policies.

8.2 City of Guelph Source Protection Plan Policies

Policy Number	Source Protection Plan Policies within the City of Guelph
Implementation Timing	
CG-CW-1.1.1 <i>Implement. & Timing</i>	This source protection plan came into effect on July 1, 2016, the effective date specified in the Notice of Approval posted on the Environmental Bill of Rights Registry. Amendments to the Source Protection Plan are permitted in accordance with the <i>Clean Water Act, 2006</i> , and the General Regulations. The effective date for amended policies, only including but not limited to the addition of new drinking water

Policy Number	Source Protection Plan Policies within the City of Guelph
	threats and regulated areas and activities, is the date of posting of the Notice of Approval of the amendment provisions on the Environmental Bill of Rights Registry.
CG-CW-1.1.2 <i>Implement. & Timing</i>	<p>Except as set out below, the policies contained in this Source Protection Plan shall come into effect on the date set out by the Minister.</p> <ol style="list-style-type: none"> For Section 57 of the <i>Clean Water Act, 2006</i>, if an activity was engaged in at a particular location before this Source Protection Plan took effect, policies regarding prohibited activities do not apply to a person who engages in the activity at that location until 180 days from the date the relevant policies within the Source Protection Plan takes effect; For Section 58 of the <i>Clean Water Act, 2006</i>, if an activity was engaged in at a particular location immediately before the relevant policies within this Source Protection Plan took effect and the Risk Management Official gives notice to a person who is engaged in the activity at that location that, in the opinion of the Risk Management Official, policies regarding regulated activities should apply to the person who engages in the activity at that location on and after a date specified in the notice that is at least 120 days after the date of the notice; For Section 59 of the <i>Clean Water Act, 2006</i>, policies regarding restricted land uses shall come into effect the same day the relevant policies within the Source Protection Plan takes effect; and Where the Source Protection Policies require the City of Guelph and/or the Source Protection Authority to develop and implement education and outreach programs, incentive programs or other specified action for significant drinking water threats, such programs and actions shall be developed and implemented within five (5) years from the date the relevant policies within the Source Protection Plan takes effect.
CG-MC-1.2 <i>Implement. & Timing</i>	<p>Except as set out below, the policies contained in this Source Protection Plan shall come into effect on the date set out by the Minister.</p> <ol style="list-style-type: none"> For Section 43 of the <i>Clean Water Act, 2006</i>, if an activity was engaged in at a particular location immediately before the relevant policies within this Source Protection Plan took effect, amendments to Prescribed Instruments shall be completed within three (3) years from the date the Source Protection Plan takes effect; For Sections 40 and 42 of the <i>Clean Water Act, 2006</i>, the Official Plan and Zoning By-Laws must be amended to conform with the significant threat policies within five (5) years from the date the relevant policies within the Source Protection Plan comes into effect or the next Official Plan review required under Section 26 of the <i>Planning Act</i> and the Zoning By-law within (2) years from the adoption of the Official Plan conformity amendment.
CG-CW-1.3 <i>Municipal Act Specify Action</i>	The City of Guelph shall consider passing a by-law to assist in the ongoing identification of persons and/or locations engaged in significant threat activities identified in these policies.
Use and Areas Designated as Restricted Land Use Policies	
CG-CW-1.4 <i>Part IV -RLU</i>	In accordance with Section 59(1) of the <i>Clean Water Act, 2006</i> , the following land uses identified within the City of Guelph Official Plan are hereby designated as land uses to which the restricted land uses provisions of the <i>Clean Water Act, 2006</i> apply where activities are or would be a significant drinking water threat:

Policy Number	Source Protection Plan Policies within the City of Guelph
	<ul style="list-style-type: none"> a. All land uses, except solely residential uses, in all areas where the establishment, operation and maintenance of a waste disposal site within the meaning of Part V of the Environmental Protection Act is or would be a significant drinking water threat; b. All agricultural land uses in all areas where the application of Agricultural Source Material to land and the storage of Agricultural Source Material is or would be a significant drinking water threat; c. All land uses, except solely residential, in all areas where the application, handling and storage of commercial fertilizer is or would be a significant drinking water threat; d. All land uses, except solely residential uses, in all areas where the application of pesticide to land and the handling and storage of pesticides is or would be a significant drinking water threat; e. All land uses, except solely residential uses, in all areas where the storage of snow is or would be a significant drinking water threat; f. All land uses in all areas where handling and storage of fuel is or would be a significant drinking water threat. g. All land uses, except solely residential uses, in all areas where the handling and storage of dense non-aqueous phase liquids is or would be a significant drinking water threat; h. All land uses, except solely residential uses, in all areas where the activity of handling and storage of an organic solvent is or would be a significant drinking water threat; i. All agricultural land uses in all areas where the use of land as livestock grazing or pasturing land, an outdoor confinement area, or a farm-animal yard is or would be a significant drinking water threat; and j. All land uses in all areas where the application of Non-Agricultural Source Material to land and the storage of Non-Agricultural Source Material is or would be a significant drinking water threat. <p>Despite the above policy, a Risk Management Official may issue written direction specifying the situations under which a planning authority or building official may be permitted to make the determination that a site specific land use is not designated for the purposes of section 59. Where such direction has been issued, a site specific land use that is the subject of an application for approval under the Planning Act or for a permit under the Building Code Act is not designated for the purposes of Section 59, provided that the planning authority or building official, as applicable, is satisfied that:</p> <ul style="list-style-type: none"> a. The application complies with the written direction issued by the Risk Management Official; and b. The applicant has demonstrated that a significant drinking water threat activity designated for the purposes of section 57 or 58 will not be engaged in, or will not be affected by the application.
Official Plan Amendment(s) Policies	
CG-MC-1.5 <i>Future Land Use Planning</i>	<p>The City of Guelph shall adopt an amendment to the Official Plan, where necessary to conform to the significant drinking water threat policies in accordance with Section 40 of the <i>Clean Water Act, 2006</i>, to:</p> <ul style="list-style-type: none"> a. Identify the vulnerable areas in which drinking water threats prescribed under the <i>Clean Water Act, 2006</i> are or would be significant; b. Indicate that within the areas identified, any land use that is or would be a significant drinking water threat is required to conform with all applicable

Policy Number	Source Protection Plan Policies within the City of Guelph
	<p>Source Protection Plan policies and, as such, may be prohibited, restricted or otherwise regulated by those policies; and</p> <p>c. Incorporate any other amendments required to conform to the threat specific land use policies identified in this Source Protection Plan.</p>
Education and Outreach and Incentive Programs Policies	
CG-CW-1.6 <i>Existing/Future Education&Outreach</i>	<p>To support the significant drinking water threat policies contained within this Source Protection Plan, the City of Guelph, in collaboration with other bodies where possible, may develop and implement education and outreach programs where such programs are deemed necessary and/or appropriate by the City of Guelph and where there is available funding. Such programs may include, but not necessarily be limited to, increasing awareness and understanding of significant drinking water threats and promotion of best management practices.</p>
CG-CW-1.7 <i>Existing/Future Incentive</i>	<p>The City, in collaboration with other bodies and levels of government where possible, may develop and implement incentive programs directed at significant drinking water threat activities, where such programs are deemed necessary and/or appropriate by the City of Guelph and subject to available funding.</p>
CG-NB-1.8 <i>Existing/Future Incentive</i>	<p>The Ministry of the Environment, Conservation and Parks and other Provincial Ministries shall consider providing funding for incentive programs, such as the Ontario Drinking Water Stewardship Program, to protect existing and future drinking water sources and address significant drinking water threats.</p>
Annual Reporting Policies	
CG-CW-1.9 <i>Monitoring</i>	<p>The City of Guelph shall provide a report to the Source Protection Authority, by February 1st of each year, summarizing the actions taken to implement the Source Protection Plan policies, where specifically required by the policies.</p>
CG-CW-1.10 <i>Monitoring</i>	<p>The Risk Management Official shall provide a report to the Source Protection Authority, by February 1st of each year, summarizing the actions taken to implement the Source Protection policies, in accordance with the <i>Clean Water Act, 2006</i> and associated regulations.</p>
CG-CW-1.11 <i>Monitoring</i>	<p>Where the Source Protection Plan policies require a provincial ministry to undertake an action regarding an activity under the Environmental Compliance Approval process or review, issue, amend or create a new Prescribed Instrument, the applicable Ministry shall provide a copy of the amended or approved Prescribed Instrument to the City of Guelph.</p> <p>The applicable ministry shall provide a written report summarizing the relevant information to the Source Protection Authority by February 1st of each year.</p>
CG-CW-1.12 <i>Monitoring</i>	<p>Where the Source Protection Plan policies prohibit an activity that results in the denial of a Prescribed Instrument, the applicable ministry shall summarize the action taken in the previous year to implement the policies and provide a written report summarizing this information to the Source Protection Authority by February 1st of each year.</p>
Issue Contributing Areas	
CG-NB-1.13 <i>Existing/Future</i>	<p>To better understand the contributing source of contaminants within the Issue Contributing Areas (ICA) with respect to the applicable existing and future significant drinking water threats, the Grand River Conservation Authority in collaboration with</p>

Policy Number	Source Protection Plan Policies within the City of Guelph
<i>Specify Action ICA(NIT)</i>	the City of Guelph is encouraged, under the Source Water Protection Program funding, to find opportunities to research in the future nitrogen and/or pathogen issues to determine whether application and/or storage of Agricultural Source Materials is a contributing source of contaminant in the Issue Contributing Areas (ICA).
Conditions Policies	
CG-MC-1.15 <i>a)Existing Prescribed Instr. Condition Sites Identified</i> <i>b)Monitoring</i>	To address conditions resulting from past activities that are significant drinking water threats, the Ministry of the Environment, Conservation and Parks shall <ul style="list-style-type: none"> a. Ensure that all Prescribed Instruments issued for Condition Sites include terms and conditions, as appropriate, to ensure that the risk to drinking water sources is managed. Appropriate conditions may include requirements for source control, remediation to provincial standards, monitoring and Contaminant Management Plans; b. Ensure that Prescribed Instruments include a condition requiring the instrument holder to report on the actions taken and the status of the site to the Ministry of the Environment, Conservation and Parks, Source Protection Authority and the municipality on an annual basis; and c. Provide to the City of Guelph a copy of the new or revised Prescribed Instrument.
CG-NB-1.16 <i>Existing Specify Action Condition Sites Identified</i>	To address Conditions resulting from past activities that are significant drinking water threats, the Ministry of the Environment, Conservation and Parks should prioritize abatement activities on Conditions Sites located within the Wellhead Protection Area A, Wellhead Protection Area B and Issues Contributing Areas.
CG-MC-1.17 <i>Existing Land Use Planning Condition Sites Identified</i>	The City of Guelph shall require as a component of a complete application under the <i>Planning Act</i> the completion of an environmental screening process using a contaminated sites protocol. The contaminated sites protocol will outline the criteria when a Record of Site Condition (RSC) will be required as part of the <i>Planning Act</i> .
CG-CW-1.18 <i>Existing Specify Action Education&Outreach Condition Sites Identified</i>	To address Conditions resulting from past activities that are significant drinking water threats, the City of Guelph shall: <ul style="list-style-type: none"> a. Continue to support environmental investigation, remediation and redevelopment through the incentives provided through the City of Guelph Brownfield Redevelopment Community Improvement Plan; and b. Implement an education program on drinking water issues associated with contaminated sites in conjunction with the implementation of the City of Guelph's Brownfield Community Redevelopment Program including the protection of drinking water sources and the use of the Record of Site Condition process as a best management practice to address Condition Sites.
CG-NB-1.19 <i>Existing Conditions Specify Action</i>	To address conditions resulting from past activities that are significant drinking water threats the Ministry of the Environment, Conservation and Parks and the City of Guelph : <ul style="list-style-type: none"> a. Shall meet at a minimum frequency of every six months for the purpose of mutually sharing information on Condition sites; and b. Should mutually share information related, as appropriate, to technical investigations or remediation, technical data, actions taken by Ministry of the

Policy Number	Source Protection Plan Policies within the City of Guelph
	<p>Environment, Conservation and Parks or by the City of Guelph, inspections, other relevant information; and</p> <p>c. Should develop an Information-Sharing Process document including requirements, if any, for meeting agendas, participants, the nature and format for the types of information to be mutually shared, and the Information-Sharing Process document should be developed within six months from the date the Source Protection Plan takes effect.</p>
Strategic Actions Policies	
Spill Prevention, Spill Contingency or Emergency Response Plans	
<p>CG-NB-1.20</p> <p><i>Existing/Future Specify Action</i></p>	<p>To ensure Emergency Response Plans are updated for the purpose of protecting drinking water sources with respect to spills that occur within a Wellhead Protection Area along highways or railway lines, the following policies apply:</p> <ol style="list-style-type: none"> Within five (5) years of the Source Protection Plan coming into effect, the City of Guelph is requested to incorporate the location of Wellhead Protection Areas into the Emergency Response Plan to protect drinking water sources when a spill occurs along highways or rail lines; and The Ministry of the Environment, Conservation and Parks is requested to provide mapping of vulnerable areas to assist the Spills Action Centre in responding to reported spills along transportation corridors within two years of the source protection plan coming into effect.
Transport Pathways	
<p>CG-NB-1.21</p> <p><i>Future Specify Action Incentive Land Use Planning</i></p>	<p>To protect municipal water supplies from increased vulnerability due to transport pathways where activities could be a significant drinking water threat, the following policies apply:</p> <ol style="list-style-type: none"> The Ministry of the Environment, Conservation and Parks is requested to provide ongoing funding for incentive programs focused on facilitating the abandonment of wells in accordance with O. Reg. 903; The Ministry of the Environment, Conservation and Parks is requested as a priority to enforce the requirements of O. Reg. 903 with respect to the abandonment of wells and to enforce Section 33(1), (2) and (3) of the <i>Ontario Water Resources Act</i> once it comes into full force and effect; The City of Guelph is requested to incorporate conditions of approval for <i>Planning Act</i> and <i>Condominium Act</i> applications to ensure private wells that are no longer in use are abandoned in accordance with O. Reg. 903; and The City of Guelph is requested to ensure best management practices are utilized to protect the quantity and quality of groundwater sources during the installation of new municipal infrastructure.
<p>CG-NB-1.22</p> <p><i>Existing/Future Specify Action</i></p>	<p>The City of Guelph should amend its Official Plan to require the assessment and mitigation of impacts of the establishment of transport pathways associated with <i>Planning Act</i> applications in Wellhead Protection Areas A and B where the vulnerability equals ten (10).</p>
Interpretation	
<p>CG-CW-1.23</p> <p><i>Interpretation of Source Protection Plan</i></p>	<p>The Source Protection Plan provides policies to meet the objectives of the <i>Clean Water Act, 2006</i>. The Source Protection Plan consists of the written policy text and Schedules.</p> <ol style="list-style-type: none"> The Schedules in the Source Protection Plan identify the areas where the policies of the Source Protection Plan apply. The boundaries for the circumstances shown on the Plan Schedules are general. More detailed

Policy Number	Source Protection Plan Policies within the City of Guelph
	<p>interpretation of the boundaries relies on the mapping in the approved Assessment Report and the Specific Circumstances found in the Tables of Drinking Water Threats, <i>Clean Water Act, 2006</i>; and</p> <p>b. Where any Act or portion of an Act of the Ontario Government or Canadian Government is referenced in this Plan, such reference shall be interpreted to refer to any subsequent renaming of sections in the Act as well as any subsequent amendments to the Act, or successor thereof. This provision is also applicable to any policy statement, regulation or guideline issued by the Province or the municipality.</p>
Provincial Ministry Review of Prescribed Instruments	
CG-NB-1.24 <i>Existing/Future Prescribed Instruments</i>	<p>The Ministry of the Environment, Conservation and Parks, The Ministry of Agriculture, Food and Rural Affairs, and the Ministry of Northern Development, Mines, Natural Resources and Forestry, for Prescribed Instruments and Conditions for significant drinking water threats within vulnerable areas, should consider advising the City of Guelph regarding applications under review and that the City of Guelph be provided an opportunity to provide comments on these applications. The relevant Ministry shall have due regard to the comments submitted by the City of Guelph.</p>
CG-MC-1.25 <i>Existing/Future Prescribed Instruments</i>	<p>Any Prescribed Instrument issued under the <i>Nutrient Management Act</i> that is created or amended or is used for the purposes of obtaining an exemption from a Risk Management Plan under section 61 of O. Reg. 287/07 shall incorporate terms and conditions that, when implemented, manage the activities they regulate such that those activities cease to be or never become, a significant drinking water threat. OMAFRA is expected to review all Prescribed Instruments issued under the <i>Nutrient Management Act</i> in areas where the activities they regulate are, or would be, significant drinking water threats to ensure the Prescribed Instruments contain such terms and conditions, including the Prescribed Instruments that are not directly created or issued by OMAFRA, such as Nutrient Management Plans.</p>
CG-NB-1.26 <i>Existing/Future Specify Action</i>	<p>OMAFRA, and other creators/issuers of Prescribed Instruments under the <i>Nutrient Management Act</i>, are expected to consult with the Risk Management Official with respect to any modifications or requirements that may need to be incorporated into such Prescribed Instruments to ensure the activities they regulate cease to be or never become significant drinking water threats.</p>

8.3 Transition Policies

Policy Number	Source Protection Plan Policies within the City of Guelph
Transition Policies	
CG-CW-2.1 <i>Transition</i>	<p>For the purposes of the City of Guelph Source Protection Plan policies, where one or more of the following has been received prior to the Source Protection Plan coming into effect:</p> <ol style="list-style-type: none"> A complete application for site plan approval under the <i>Planning Act</i>; A complete application for Environmental Compliance Approval; or A complete application for a Building Permit; <p>A related significant threat activity shall be permitted subject to the policies pertaining to existing significant threat activity as well as any further applications required under the <i>Planning Act</i>, <i>Condominium Act</i>, Building Permit or Prescribed Instruments required to implement the development proposal associated with this significant threat</p>

	activity. Where the above noted applications have lapsed or been withdrawn, this policy shall no longer apply.
--	--

8.4 Policies Addressing Prescribed Drinking Water Threats

Policy Number	Policies Addressing Prescribed Drinking Water Threats within the City of Guelph
1. Establishment, Operation or Maintenance of a Waste Disposal Site, within the Meaning of Part V of the <i>Environmental Protection Act</i>	
CG-MC-3 a) b) Existing/Future Prescribed Instr. WHPA-A-v.10; WHPA-B-v.10; WHPA-B-v.8; WHPA-C-v.8; ICA (NIT/TCE) c) Future Prescribed Instr. WHPA-A-v.10; WHPA-B-v.10; WHPA-B-v.8; WHPA-C-v.8; ICA (NIT) d) Existing/Future WHPA-A-v.10	For waste disposal sites within the meaning of Part V of the <i>Environmental Protection Act</i> within vulnerable areas where this activity is or would be a significant drinking water threat: a. For an existing waste disposal site, the Ministry of the Environment, Conservation and Parks shall ensure that the Environmental Compliance Approval that governs the waste disposal site includes terms and conditions, as appropriate, to ensure the activity ceases to be a significant drinking water threat; b. For future waste disposal sites including discharges from future mine tailings ponds under the <i>Ontario Water Resource Act</i> and/or for future waste disposal sites within the meaning of Part V of the <i>Environmental Protection Act</i> , except for waste disposal sites-storage, the Ministry of the Environment, Conservation and Parks shall prohibit these activities within the Environmental Compliance Approvals process so that these activities never become a significant drinking water threat; and c. For future waste disposal sites - storage, the Ministry of the Environment, Conservation and Parks shall ensure that the Environmental Compliance Approval that governs the waste disposal site - storage includes appropriate terms and conditions to ensure that the waste disposal site never becomes a significant drinking water threat. d. The Ministry of the Environment, Conservation and Parks shall ensure that the Environmental Compliance Approval that governs an existing or new temporary waste destruction unit for Polychlorinated biphenyl contains appropriate terms and conditions to ensure that the activity ceases to be or does not become be a significant drinking water threat. The Environmental Compliance Approval shall include annual reporting to the Ministry of the Environment, Conservation and Parks of water quality monitoring in related groundwater monitoring wells and surface water monitoring locations as appropriate.
CG-CW-4 Existing/ Future Part IV-RMP WHPA-A-v.10; WHPA-B-v.10; WHPA-B-v.8; WHPA-C-v.8; ICA (NIT/TCE)	The establishment, operation and maintenance of a waste disposal site within the meaning of Part V of the <i>Environmental Protection Act</i> and/or storage facility exempt from Environmental Compliance Approvals under Section 39 of the <i>Environmental Protection Act</i> within vulnerable areas where this activity is or would be a significant drinking water threat has been designated for the purpose of Section 58 of the <i>Clean Water Act, 2006</i> and a Risk Management Plan is required except for the following. For the storage of hazardous or liquid industrial waste or waste as described in clauses (p), (q), (r), (s), (t) or (u) of the definition of hazardous waste for Wellhead Protection Areas A and B where the vulnerability is equal to ten (10), the City of Guelph shall develop and implement an education and outreach program and encourage the appropriate handling and disposal of these wastes.
2. Establishment, Operation or Maintenance of a System That Collects, Stores, Transmits, Treats or Disposes of Sewage	
Sewage System or Sewage Works- Onsite Sewage Systems	
Sewage System or Sewage Works- Onsite Sewage Systems Holding Tank	

Policy Number	Policies Addressing Prescribed Drinking Water Threats within the City of Guelph
CG-MC-5 <i>Future Land Use Planning WHPA-A-10</i>	To ensure that on-site sewage systems never become a significant drinking water threat, new lots that rely on servicing by onsite sewage systems with a design flow of less than or equal to 10,000 Litres per day and regulated under the Ontario <i>Building Code Act</i> are prohibited within a Wellhead Protection Area A.
CG-CW-6 <i>Existing/Future Specify Action WHPA-A-v.10; WHPA-B-v.10; ICA (NIT)</i>	Within vulnerable areas where on-site sewage systems and holding tanks are or would be significant drinking water threats, the City of Guelph shall implement an on-site sewage system maintenance inspection program, as required under the Ontario <i>Building Code Act</i> with a priority for inspections on those systems in closest proximity to the municipal drinking water supply to ensure this activity ceases to be and/or never becomes a significant drinking water threat.
CG-CW-7 <i>Existing Education&Outreach WHPA-A-v.10 WHPA-B-v.10 ICA (NIT)</i>	For existing on-site sewage systems and holding tanks within the City of Guelph, the City of Guelph shall encourage landowners through an education and outreach program to connect to a municipal sewage system, when an on-site sewage systems and holding tank is used within a vulnerable area, where this activity is a significant drinking water threat, and where municipal services are provided in the immediate vicinity, to ensure this activity ceases to be a significant drinking water threat.
CG-MC-8 <i>Future Land Use Planning WHPA-A-v.10; WHPA-B-v.10; ICA (NIT)</i>	To ensure that future on-site sewage systems and holding tanks never become a significant drinking water threat, the City of Guelph shall require all new development to connect to municipal services except where private services are specifically permitted within the Official Plan on the date when the Source Protection Plan comes into effect.
CG-NB-9 <i>Existing Incentive WHPA-A-v.10; WHPA-B-v.10; ICA (NIT)</i>	To ensure existing on-site sewage systems and holding tanks cease to be a significant drinking water threat, the Grand River Conservation Authority, in consultation with the City of Guelph, will deliver available cost share incentive programs, where such an activity is a significant drinking water threat, as long as the Grand River Conservation Authority has such programs and outreach staff available, and work with affected land owners to implement best management practices.
CG-MC-10 <i>Existing/Future Prescribed Instr. WHPA-A-v.10; WHPA-B-v.10; ICA (NIT)</i>	For existing and future onsite sewage systems regulated under the <i>Ontario Water Resources Act</i> located within vulnerable areas where they are or would be a significant drinking water threat, the Ministry of the Environment, Conservation and Parks shall ensure that the Environmental Compliance Approval that governs the onsite sewage system includes appropriate terms and conditions to ensure this activity ceases to be and/or never becomes a significant drinking water threat.
Sewage System or Sewage Works- Sewage Storage - Treatment or Holding Tanks Sewage System or Sewage Works- Sewage Treatment Plant Effluent Discharges (includes lagoons)	
CG-MC-11 <i>Existing/Future Prescribed Instr. WHPA-A-v.10; WHPA-B-v.10; WHPA-B-v.8; WHPA-C-v.8; ICA (NIT/TCE)</i>	For existing and future sewage treatment plants located within vulnerable areas where the activities are or would be a significant drinking water threat, the Ministry of the Environment, Conservation and Parks shall ensure that the Environmental Compliance Approval that governs the sewage treatment plant includes appropriate terms and conditions to ensure that these activities cease to be and/or do not become a significant drinking water threat.
CG-MC-12 <i>Future</i>	To ensure sewage treatment plant effluent discharges (including lagoons) never become a future significant drinking water threat related to a sewage treatment plant, the City of Guelph shall require that, for any <i>Planning Act</i> application, for a new

Policy Number	Policies Addressing Prescribed Drinking Water Threats within the City of Guelph
<i>Land Use Planning</i> WHPA-A-v.10; WHPA-B-v.10; WHPA-B-v.8; WHPA-C-v.8; ICA (NIT/TCE)	Industrial/ Commercial/ Institutional use that a Waste Survey Report be filed as part of the complete application requirements.
CG-CW-13 <i>Existing Education&Outreach</i> WHPA-A-v.10; WHPA-B-v.10; WHPA-B-v.8; WHPA-C-v.8; ICA (NIT/TCE)	To ensure sewage treatment plant effluent discharges (including lagoons) cease to be a significant drinking water threat related to a sewage treatment plant, the City of Guelph shall encourage the existing Industrial/ Commercial/ Institutional Sector to complete the Waste Survey Report as part of a new education and outreach program.
Sewage System or Sewage Works- Sanitary Sewers and Related Pipes	
CG-MC-14 <i>Existing/Future Prescribed Instr.</i> WHPA-A-v.10; WHPA-B-v.10; ICA (NIT)	For existing and future sanitary sewers and pipes within vulnerable areas where this activity is or would be a significant drinking water threat, the Ministry of the Environment, Conservation and Parks shall ensure that the Environmental Compliance Approval that governs the sanitary sewer and related pipes includes appropriate terms and conditions to ensure the activity ceases to be and/or never becomes a significant drinking water threat.
Sewage System or Sewage Works- Discharge from a Stormwater Management Facility	
CG-MC-15 <i>Existing/Future Prescribed Instr.</i> WHPA-A-v.10; WHPA-B-v.10; ICA (NIT)	For the existing or future discharge from a stormwater management facility within vulnerable areas where this activity is or would be a significant drinking water threat, the Ministry of the Environment, Conservation and Parks shall ensure that the Environmental Compliance Approval that governs the stormwater management facility includes appropriate terms and conditions to ensure that the activity ceases to be and/or never becomes a significant drinking water threat.
3. The Application of Agricultural Source Material to Land 4. The Storage of Agricultural Source Material	
CG-MC-16 <i>Existing/Future Prescribed Instr.</i> WHPA-A-v.10; WHPA-B-v.10; ICA (NIT)	To ensure existing and future application or storage of agricultural source material ceases to be and/or never becomes a significant drinking water threat, for operations which are managed by Nutrient Management Plans and Strategies under the <i>Nutrient Management Act</i> and located within a vulnerable area where the application or storage is or would be a significant drinking water threat, the Ministry of Agriculture, Food and Rural Affairs shall ensure that Nutrient Management Plans and Strategies include appropriate terms and conditions to ensure that the risk to drinking water sources is appropriately managed and that required contingency plans contain the requirement for notification of the appropriate municipal official and the Spills Action Centre if a leak is discovered from an agricultural source material facility or there is a spill.
CG-NB-16.1 <i>Existing/Future Specify Action</i> WHPA-A-v.10; WHPA-B-v.10; ICA (NIT)	To ensure existing and future application or storage of agricultural source material ceases to be and/or never becomes a significant drinking water threat, for operations which are managed by Nutrient Management Plans and Strategies under the <i>Nutrient Management Act</i> and located within a vulnerable area where the application or storage is or would be a significant drinking water threat The Ministry of the Environment, Conservation and Parks shall consider prioritizing and conducting regular compliance inspections of agricultural operations, as appropriate, where significant drinking water threat activities exist, and shall consider guiding farmers to improve compliance performance, when needed.

Policy Number	Policies Addressing Prescribed Drinking Water Threats within the City of Guelph
CG-CW-17 <i>Existing/Future Part IV-RMP. WHPA-A-v.10; WHPA-B-v.10; ICA (NIT)</i>	<p>To ensure existing and future application or storage of agricultural source material ceases to be and/or never becomes a significant drinking water threat on properties not phased in under the <i>Nutrient Management Act</i> within vulnerable areas where this activity is or would be a significant drinking water threat, the existing and future application or storage of agricultural source material within a vulnerable area is designated for the purpose of Section 58 of the <i>Clean Water Act, 2006</i>; and a Risk Management Plan will be required.</p> <p>A Risk Management Plan, if necessary, shall be based upon the regulatory requirements of a Nutrient Management Plan or Strategy under the <i>Nutrient Management Act</i> scoped to address these specific threats.</p>
CG-NB-18 <i>Existing/Future Specify Action WHPA-A-v.10; WHPA-B-v.10; ICA (NIT)</i>	<p>To provide further guidance to the agricultural community about the importance of source water protection to ensure the application or storage of agricultural source material ceases to be and/or never becomes a significant drinking water threat, the Ministry of Agriculture, Food and Rural Affairs is requested to review and amend, if necessary, the information provided to the agricultural community to include information about source water protection, the location of Wellhead Protection Areas and the appropriate use of agricultural source material within vulnerable areas where this activity is or would be a significant water threat. The information provided should encourage farm operators located within these vulnerable areas to complete an Environmental Farm Plan.</p>
6. The Application of Non-Agricultural Source Material (NASM) to Land 7. The Handling and Storage of Non-Agricultural Source Material (NASM)	
CG-MC-19 <i>Existing/Future Prescribed Instr. WHPA-A-v.10; WHPA-B-v.10; ICA (NIT)</i> <i>Applies only to the application of NASM containing materials from a meat plant or sewage works</i>	<p>Where the existing application, or handling and storage of non-agricultural source material in a Wellhead Protection Area A is or where the future application, or handling and storage of non-agricultural source material in a Wellhead Protection Area or where a nitrate issue has been identified would be a significant drinking water threat, the Ministry of Agriculture, Food and Rural Affairs and Ministry of the Environment, Conservation and Parks shall ensure all non-agricultural source material plans (NASM plans) and Environmental Compliance Approvals required under the <i>Nutrient Management Act</i> and <i>Environmental Protection Act</i> include appropriate terms and conditions to ensure the activity ceases to be and/or never becomes a significant drinking water threat.</p>
CG-CW-20 <i>Future Part IV-Prohibit WHPA-A-v.10</i> <i>Applies only to the application of NASM containing materials from a meat plant or sewage works</i>	<p>To ensure the future application, or handling and storage of non-agricultural source material in a Wellhead Protection Area A never becomes a significant drinking water threat, these activities are designated for the purpose of Section 57 of the <i>Clean Water Act, 2006</i> and are therefore prohibited.</p>
CG-NB-21 <i>Existing/Future Specify Action WHPA-A-v.10; WHPA-B-v.10; ICA (NIT)</i> <i>Applies only to the application of NASM</i>	<p>To ensure compliance with non-agricultural source material plans and the existing and future application, or handling and storage of non-agricultural source material cease to be and/or never become a significant drinking water threat, where these activities are or would be a significant drinking water threat, the Ministry of the Environment, Conservation and Parks shall consider prioritizing inspections based on proximity to the wellhead and conduct regular compliance inspections of operations, as appropriate.</p>

Policy Number	Policies Addressing Prescribed Drinking Water Threats within the City of Guelph
<i>containing materials from a meat plant or sewage works</i>	
8. The Application of Commercial Fertilizer to Land	
9. The Handling and Storage of Commercial Fertilizer	
CG-MC-22 <i>Existing/Future Prescribed Instr.</i> <i>WHPA-A-v.10</i> <i>WHPA-B-v.10</i> <i>ICA (NIT)</i> <i>Does currently not apply to the application of commercial fertilizer due to percent managed land and livestock density calculation</i>	<p>Where the existing or future application of commercial fertilizer is or would be a significant drinking water threat within a vulnerable area, the Ministry of Agriculture, Food and Rural Affairs shall ensure that Nutrient Management Plans required under the <i>Nutrient Management Act</i> include appropriate terms and conditions to ensure that the activity ceases to be and/or never becomes a significant drinking water threat.</p>
CG-CW-23 <i>Existing/Future Part IV- RMP</i> <i>WHPA-A-v.10</i> <i>WHPA-B-v.10</i> <i>ICA (NIT)</i> <i>Does currently not apply to the application of commercial fertilizer due to percent managed land and livestock density calculation</i>	<p>To ensure the existing or future application and storage of commercial fertilizer cease to be or never become significant drinking water threats for properties not phased in under the <i>Nutrient Management Act</i>, and/or the existing storage of commercial fertilizer of greater than 2,500 Kilograms of commercial fertilizer in Wellhead Protection Area A and B, and/or new or expanded storage of commercial fertilizer of greater than 2,500 Kilograms of commercial fertilizer outside of a Wellhead Protection Area A, this activity is designated for the purpose of Section 58 of the <i>Clean Water Act, 2006</i> and a Risk Management Plan is required.</p> <p>The Risk Management Plan for the application and storage of commercial fertilizer for agricultural operations shall be based upon, as a minimum, the regulatory requirements of a Nutrient Management Plan under the <i>Nutrient Management Act</i> and scoped to address this specific threat.</p>
CG-MC-24 <i>Future Land Use Planning</i> <i>WHPA-A-v.10</i>	<p>To ensure that the new storage of fertilizer never becomes a significant drinking water threat within vulnerable areas where this activity would be a significant drinking water threat, the storage of greater than 2,500 Kilograms of commercial fertilizer, new or expanded manufacturing and wholesale warehousing facilities with storage of greater than 2,500 Kilograms of commercial fertilizer is prohibited within a Wellhead Protection Area A using tools under the <i>Planning Act</i>.</p>
10. The Application of Pesticide to Land	
11. The Handling and Storage of Pesticides	
CG-MC-25 <i>Existing/Future Prescribed Instr.</i> <i>WHPA-A-v.10</i> <i>WHPA-B-v.10</i>	<p>To ensure that the existing or future application, or handling and storage of pesticide cease to be and/or never become significant drinking water threats within a vulnerable area, where these activities are or would be significant drinking water threats, the Ministry of the Environment, Conservation and Parks shall ensure that all permits under the <i>Pesticide Act</i> include appropriate terms and conditions.</p>
CG-CW-26 <i>Existing/Future Part IV-RMP</i>	<p>To ensure that the existing or future application, or handling and storage of pesticide cease to be and/or never become a significant drinking water threat within a vulnerable area, where these activities are or would be significant drinking water threats, excluding the future handling and storage of greater than 2,500 Kilograms</p>

Policy Number	Policies Addressing Prescribed Drinking Water Threats within the City of Guelph
WHPA-A-v.10 WHPA-B-v.10	of pesticide or the storage of greater than 250 Kilograms for retail sale or for extermination within a Wellhead Protection Area A, these activities are designated for the purpose of Section 58 of the <i>Clean Water Act, 2006</i> and a Risk Management Plan is required. A Risk Management Plan shall incorporate, as a minimum, best management practices, monitoring and an inspection protocol.
CG-MC-27 Future Land Use Planning WHPA-A-v.10	To ensure that the future storage of pesticide never becomes a significant drinking water threat within vulnerable areas, where this activity would be a significant drinking water threat, new manufacturing and wholesale warehousing facilities with storage of greater than 2,500 Kilograms of pesticide or the storage of greater than 250 Kilograms for retail sale or for extermination are prohibited within a Wellhead Protection Area A using tools under the <i>Planning Act</i> .
13. The Handling and Storage of Road Salt	
CG-CW-28 Future Specify Action WHPA-A-v.10 WHPA-B-v.10	To ensure that the future handling and storage of road salt never becomes a significant drinking water threat within the vulnerable areas, where this activity would be a significant drinking threat, within two (2) years of the date that the Source Protection Plan comes into effect, the City of Guelph shall amend the Salt Management Plan to identify the location of Wellhead Protection Areas and utilize best management practices in these areas.
CG-MC-29 Future Land Use Planning WHPA-A-v.10 WHPA-B-v.10	To ensure that the future handling and storage of salt never becomes a significant drinking water threat, where this activity would be a significant drinking water threat, the City of Guelph shall require new development to be designed based on best management practices regarding handling and storage.
CG-MC-30 Future Land Use Planning WHPA-A-v.10 WHPA-B-v.10	To ensure that future storage of road salt of greater than 5,000 tonnes never becomes a significant drinking water threat within vulnerable areas, where this activity would be a significant drinking water threat, this activity shall be prohibited using tools under the <i>Planning Act</i> .
CG-CW-31 Future Education&Outreach WHPA-A-v.10 WHPA-B-v.10	To ensure that the future handling and storage of road salt never becomes a significant drinking water threat within the vulnerable areas, where this activity would be a significant drinking water threat, the City of Guelph shall establish or enhance the education and outreach programs for the private and public sector, as well as the general public, about the impacts of road salt on drinking water sources and the use of best management practices. It is recommended that the key messages be the efficient use of road salts and the use of alternatives.
14. The Storage of Snow	
CG-MC-32.1 Future Land Use Planning WHPA-A-v.10 WHPA-B-v.10 ICA (NIT)	To ensure that the future storage of snow never becomes a significant drinking water threat within vulnerable areas, where this activity would be a significant drinking water threat, the City of Guelph shall require new development to be designed and maintained based on best management practices regarding snow storage including the provision of designated snow storage areas and the management of associated melt water.
CG.CW.32.2 Existing/ Future Part IV- RMP	To ensure that the existing and future storage of snow ceases to be and/or never becomes a significant drinking water threat within vulnerable areas, where this activity is or would be a significant drinking water threat, the activity of storage of

Policy Number	Policies Addressing Prescribed Drinking Water Threats within the City of Guelph
WHPA-A-v.10 WHPA-B-v.10 ICA (NIT)	snow has been designated for the purpose of Section 58 of the <i>Clean Water Act, 2006</i> and a Risk Management Plan is required. .
15. The Handling and Storage of Fuel	
CG-CW-33 Existing/Future Education&Outreach WHPA-A-v.10 WHPA-B-v.10	To ensure that the existing and future handling and storage of fuel ceases to be and/or never becomes a significant drinking water threat within a vulnerable area, where this activity is or would be a significant drinking water threat, the City of Guelph shall develop and implement an education and outreach program for identified fuel oil tanks with storage of fuel greater than 250 Litres and less than or equal to 2,500 Litres outlining the requirements of owning a heating oil system including proper maintenance and the steps to be taken if there is a spill or leak detected based on guidance information provided from the Technical Standards and Safety Authority and other heating oil system provides/ agencies.
CG-CW-34 a) Future Part IV-Prohibit WHPA-A-v.10 b) Existing/Future Part IV-RMP WHPA-A-v.10 WHPA-B-v.10	To ensure that existing and future handling and storage of fuel greater than 2,500 Litres ceases to be and/or never becomes a significant drinking water threat within a vulnerable area, where this activity is or would be a significant drinking water threat; <ol style="list-style-type: none"> Within a Wellhead Protection Area A, new handling and storage of fuel in conjunction with a new retail gas station or new or bulk fuel storage facility excluding bulk fuel storage associated with a municipal emergency generator facility is designated for the purpose of Section 57 of the <i>Clean Water Act, 2006</i> and is therefore prohibited; and Within Wellhead Protection Areas A and B, the existing and new handling and storage of fuel, within a vulnerable area, is designated for the purpose of Section 58 of the <i>Clean Water Act, 2006</i> and a Risk Management Plan is required. The Risk Management Plan shall be scoped to a Contaminant Management Plan and any monitoring, reporting and auditing requirements required by the Technical Standards and Safety Authority, as appropriate.
CG-MC-35 Future Land Use Planning WHPA-A-v.10	To ensure that the future handling and storage of fuel never becomes a significant drinking water threat within vulnerable areas where this activity would be a significant drinking water threat, the future handling and storage of fuel in conjunction with a new or expanded retail gas station and new or expanded bulk fuel storage facility excluding bulk fuel storage associated with a municipal emergency generator facility is prohibited within a Wellhead Protection Area A using tools under the <i>Planning Act</i> .
CG-MC-36 Future Prescribed Instr. WHPA-A-v.10 WHPA-B-v.10	Where future handling and storage of fuel would be a significant drinking water threat within a vulnerable area for activities regulated under the <i>Aggregate Resources Act</i> , the Ministry of Northern Development, Mines, Natural Resources and Forestry should ensure that licenses, permits and/or site plans issued under the <i>Aggregate Resources Act</i> and/or related regulations, standards and policies include terms and conditions, as appropriate, to ensure that the activity never becomes a significant drinking water threat.
16. The Handling and Storage of a Dense Non-Aqueous Phase Liquid (DNAPL)	
CG-CW-37 a) Future Part IV-Prohibit. WHPA-A-v.10 b) Existing/Future Part IV-RMP WHPA-A/B/C	To ensure that the existing and future handling and storage of a dense non-aqueous phase liquid ceases to be and/or never becomes a significant drinking water threat, within a vulnerable area, where this activity would be a significant drinking water threat: <ol style="list-style-type: none"> New or expanded handling and storage of specified dense non-aqueous phase liquids is designated for the purpose of Section 57 of the <i>Clean Water Act, 2006</i> and is therefore prohibited within a Wellhead Protection Area A; and,

Policy Number	Policies Addressing Prescribed Drinking Water Threats within the City of Guelph
ICA(TCE)	b. New or expanded handling and storage of dense non-aqueous phase liquids outside of the Wellhead Protection Area A and existing handling and storage of dense non-aqueous phase liquids within a vulnerable area, where this activity is a significant drinking water threat, this activity is designated for the purposes of Section 58 of the <i>Clean Water Act, 2006</i> and a Risk Management Plan is required. A Risk Management Plan for a significant threat that is Technical Standards and Safety Authority regulated shall be scoped to a Contaminant Management Plan and any monitoring, reporting and auditing requirements provided to the Technical Standards and Safety Authority as appropriate to address the significant drinking water threat.
CG-MC-38 <i>Future Land Use Planning WHPA-A-v.10</i>	To ensure that the future storage of dense non-aqueous phase liquid never becomes a significant drinking water threat, within vulnerable areas, where this activity would be a significant drinking water threat, new or expanded storage of the specified dense non-aqueous phase liquids identified as a significant drinking water threat under the <i>Clean Water Act, 2006</i> is prohibited within a Wellhead Protection Area A using tools under the Planning Act.
CG-CW-39 <i>Existing Education&Outreach WHPA-A/B/C ICA(TCE)</i>	To ensure that existing handling and storage of a dense non-aqueous phase liquid ceases to be a significant drinking water threat within a vulnerable area, where this activity would be a significant drinking water threat, the City of Guelph shall develop and implement education and outreach programs to encourage business and industry to utilize alternative products where available.
17. The Handling and Storage of an Organic Solvent	
CG-CW-40 <i>a) Existing/Future Part IV-Prohibit WHPA-A-v.10 b) Existing/Future Part IV- RMP WHPA-B-v.10 c) Existing/Future Education&Outreach WHPA-A-v.10 WHPA-B-v.10</i>	To ensure that existing and future handling and storage of organic solvents ceases to be and/or never becomes a significant drinking water threat within a vulnerable area, where this activity is or would be a significant drinking water threat: a. Any new or expanded handling and storage of the specified organic solvents in the quantities identified as significant drinking water threats are designated for the purpose of Section 57 of the <i>Clean Water Act, 2006</i> and are therefore prohibited within a Wellhead Protection Area A; b. The existing and future handling and storage of organic solvents is designated for the purpose of Section 58 of the <i>Clean Water Act, 2006</i> within vulnerable areas in the Wellhead Protection Area B and a Risk Management Plan is required; and c. The City of Guelph shall continue the established education and outreach programs on hazardous waste disposal, responsible waste disposal and reduction of waste including organic solvents in Wellhead Protection Area A and B.
CG-MC-41 <i>Future Land Use Planning WHPA-A-v.10</i>	To ensure that new or expansion to existing storage of organic solvents never becomes a significant drinking water threat within vulnerable areas, where this activity would be a significant drinking water threat, the new or expanded storage of the specified organic solvents in the quantities identified as a significant drinking water threat is prohibited within a Wellhead Protection Area A using tools under the <i>Planning Act</i> .
18. The Management of Runoff that Contains Chemicals Used in De-icing of Aircraft	
CG-NB-42 <i>Future Specify Action WHPA-A-v.10</i>	To ensure that future runoff containing de-icing chemicals never becomes a significant drinking water threat within a vulnerable area, where this activity would be a significant drinking water threat, the airport authority/operator is encouraged to include appropriate design standards and best management practices.

Policy Number	Policies Addressing Prescribed Drinking Water Threats within the City of Guelph
<i>WHPA-B-v.10</i> <i>Monitoring</i>	The City of Guelph shall report to the Source Protection Authority if an application has been made for a new airport facility within the vulnerable areas where this activity would be a significant drinking water threat by February 1 st of each year.
21. The Use of Land as Livestock Grazing or Pasturing Land, an Outdoor Confinement Area or Farm Animal Yard	
CG-MC-43 <i>Existing/Future Prescribed Instr.</i> <i>WHPA-A-v.10</i> <i>WHPA-B-v.10</i> <i>ICA(NIT)</i>	To ensure that the existing and future use of land as an outdoor confinement area or farm animal yard on farms phased-in under the <i>Nutrient Management Act</i> ceases to be and/or never becomes a significant drinking water threat within a vulnerable area where this activity is or would be a significant drinking water threat, the Ministry of Agriculture, Food and Rural Affairs shall ensure all Nutrient Management Strategies include appropriate terms and conditions to ensure the risk to drinking water sources is managed.
CG-CW-44 <i>Existing/Future Part IV-RMP</i> <i>WHPA-A-v.10</i> <i>WHPA-B-v.10</i> <i>ICA(NIT)</i>	<p>To ensure that the existing or future use of land as an outdoor confinement area, or farm animal yard on farms not phased-in under the <i>Nutrient Management Act</i>, or the use of land for livestock grazing or pasturing on all farms ceases to be and/or never becomes a significant drinking water threat within vulnerable areas, where this activity is or would be a significant drinking water threat, this activity is designated for the purposes of Section 58 of the <i>Clean Water Act, 2006</i> and a Risk Management Plan is required.</p> <p>Risk Management Plans shall be based upon the regulatory requirements of a Nutrient Management Strategy under the <i>Nutrient Management Act</i> as a minimum and incorporate best management practices.</p>
CG-NB-45 <i>Existing/Future Incentive Program Specify Action</i> <i>WHPA-A-v.10</i> <i>WHPA-B-v.10</i> <i>ICA(NIT)</i>	<p>To ensure that the existing or future use of land as an outdoor confinement area or farm animal yard on farms not phased-in under the <i>Nutrient Management Act</i>, or the use of land for livestock grazing or pasturing on all farms ceases to be and/or never becomes a significant drinking water threat within vulnerable areas, where this activity is or would be a significant drinking water threat:</p> <ol style="list-style-type: none"> The Ministry of the Environment, Conservation and Parks is encouraged to continue to provide ongoing funding for stewardship projects on agricultural properties; and The Ministry of the Environment, Conservation and Parks shall consider prioritizing and conducting regular compliance inspections of agricultural operations, as appropriate, and shall consider guiding farmers to improve compliance performance, when needed.
22. The Establishment and Operation of a Hydrocarbon Pipeline	
CG-NB-46 <i>Future Specify Action</i> <i>WHPA-A-v.10</i> <i>WHPA-B-v.10</i> <i>Monitoring</i>	<p>To ensure this activity never becomes a significant drinking water threat, the establishment and operation of a hydrocarbon pipeline within the meaning of O. Reg. 210/01 under the <i>Technical Safety and Standards Act</i> or that is subject to the <i>Canadian Energy Regulator Act</i>, the Canada Energy Regulator, and Ontario Energy Board, in their consideration of any pipelines within vulnerable areas where the activity would be a significant drinking water threat, are encouraged to ensure the applicant has complied with or included appropriate design standards and monitoring and maintenance practices, where applicable, to reduce the risk to drinking water sources.</p> <p>The Source Protection Authority shall document in the annual report the number of new pipelines proposed within vulnerable areas.</p>

Policy Number	Policies Addressing Prescribed Drinking Water Threats within the City of Guelph

8.5 Appendix A: List of Policies as per Section 34 of Regulation 287/07

LIST A

Title: Significant threat policies that affect decisions under the *Planning Act* and *Condominium Act*, 1998

Opening Statement: “Clause 39 (1)(a), subsections 39 (2), (4) and (6), and sections 40 and 42 of the *Clean Water Act*, 2006 apply to the following policies:”

Content: CG-CW-1.1.1, CG-CW-1.1.2C, CG-MC-1.2b, CG-CW-1.4, CG-MC-1.5, CG-MC-1.17, CG-CW-2.1, CG-MC-5, CG-MC-8, CG-MC-12, CG-MC-24, CG-MC-27, CG-MC-29, CG-MC-30, CG-MC-32.1, CG-MC-35, CG-MC-38, CG-MC-41.

LIST B

Title: Moderate and low threat policies that affect decisions under the *Planning Act* and *Condominium Act*, 1998

Opening Statement: “Subsection 39 (1) (b) of the *Clean Water Act*, 2006 applies to the following policies:”

Content: No Applicable Policies

LIST C

Title: Significant threat policies that affect Prescribed Instrument decisions

Opening Statement: “Subsection 39 (6), clause 39 (7) (a), section 43 and subsection 44 (1) of the *Clean Water Act*, 2006 apply to the following policies:”

Content: CG-CW-1.1.1, CG-MC-1.2a, CG-MC-1.15, CG-MC-1.25, CG-CW-2.1, CG-MC-3, CG-MC-10, CG-MC-11, CG-MC-14, CG-MC-15, CG-MC-16, CG-MC-19, CG-MC-22, CG-MC-25, CG-MC-36, CG-MC-43.

LIST D

Title: Moderate and low threat policies that affect Prescribed Instrument decisions

Opening Statement: “Clause 39 (7) (b) of the *Clean Water Act*, 2006 applies to the following policies:”

Content: No Applicable Policies

LIST E

Title: Significant threat policies that impose obligations on municipalities, source protection authorities and local boards

Opening Statement: “Section 38 and subsection 39 (6) of the *Clean Water Act*, 2006 applies to the following policies:”

Content: CG-CW-1.1.1, CG-CW-1.1.2d, CG-MC-1.3, CG-CW-1.6, CG-CW-1.7, CG-CW-1.18, CG-CW-1.23, CG-CW-2.1, CG-CW-6, CG-CW-7, CG-CW-13, CG-CW-28, CG-CW-31, CG-CW-33, CG-CW-39, CG-CW-40.c.

LIST F

Title: Monitoring policies referred to in subsection 22 (2) of the *Clean Water Act, 2006*

Opening Statement: “Section 45 of the Clean Water Act, 2006 applies to the following policies:”

Content: CG-CW-1.9, CG-CW-1.10, CG-CW-1.11, CG-CW-1.12, , CG-MC-1.15, CG-NB-42, CG-NB-46.

LIST G

Title: Policies related to section 57 of the *Clean Water Act, 2006*

Opening Statement: “The following policies relate to section 57 (prohibition) of the Clean Water Act, 2006.”

Content: CG-CW-1.1.1, CG-CW-1.1.2a, CG-CW-2.1; CG-CW-20, CG-CW-34a, CG-CW-37a, CG-CW-40.a.

LIST H

Title: Policies related to section 58 of the *Clean Water Act, 2006*

Opening Statement: “The following policies relate to section 58 (Risk Management Plans) of the Clean Water Act, 2006.”

Content: CG-CW-1.1.1, CG-CW-1.1.2b, CG-CW-4, CG-CW-17a and b, CG-CW-23, CG-CW-26, CG-CW-32.2, CG-CW-34 b, CG-CW-37b, CG-CW-40b, CG-CW-44.

LIST I

Title: Policies related to section 59 of the *Clean Water Act, 2006*

Opening Statement: “The following policies relate to section 59 (Restricted Land Use) of the *Clean Water Act, 2006*”

Content: CG-CW-1.1.1, CG-CW-1.1.2c, CG-CW-1.4.

LIST J

Title: Strategic Action policies

Opening Statement: For the purposes of section 33 of O. Reg. 287/07, the following policies are identified as strategic action policies:

Content: CG-NB-1.13, CG-NB-1.19, CG-NB-1.20, CG-NB-1.21, CG-NB-1.22, CG-NB-1.24, CG-NB-1.26.

List K

Title: Significant threat policies targeted to bodies other than municipalities, local boards or source protection authorities for implementation

Opening Statement: The following policies are identified as non-legally binding policies:

Content: CG-NB-1.8, , CG-NB-1.16, CG-NB-1.26, CG-NB-9, CG-NB-16.1, CG-NB-18, CG-NB-21, CG-NB-42, CG-NB-45, CG-NB-46.

8.6 Appendix B: Prescribed Instruments and Policy Summary Tables

Table 1: Prescribed Instruments Which Apply To Source Protection Plan Policies In Lists C And D Above (S.34(4) Of O.Reg. 287/07)

Policy #	Legal Effect (conform with, have regard to)	Environmental Protection Act	Nutrient Management Act	Ontario Water Resources Act	Pesticide Act	Aggregate Resources Act
CG-CW-1.1.1	Comply With	X	X	X	X	X
CG-MC-1.2a	Must Conform	X	X	X	X	X
CG-MC-1.15	Must Conform	X		X		
CG-MC-1.25	Must Conform		X	X		
CG-MC-2.1	Must Conform	X	X	X	X	X
CG-MC-3	Must Conform	X				
CG-MC-8	Must Conform	X		X		
CG-MC-10	Must Conform	X		X		
CG-MC-11	Must Conform	X		X		
CG-MC-14	Must Conform	X		X		
CG-MC-15	Must Conform	X		X		
CG-MC-16	Must Conform		X			
CG-MC-19	Must Conform	X	X			
CG-MC-22	Must Conform		X			
CG-MC-25	Must Conform				X	
CG-MC-36	Must Conform					X
CG-MC-43	Must Conform		X			

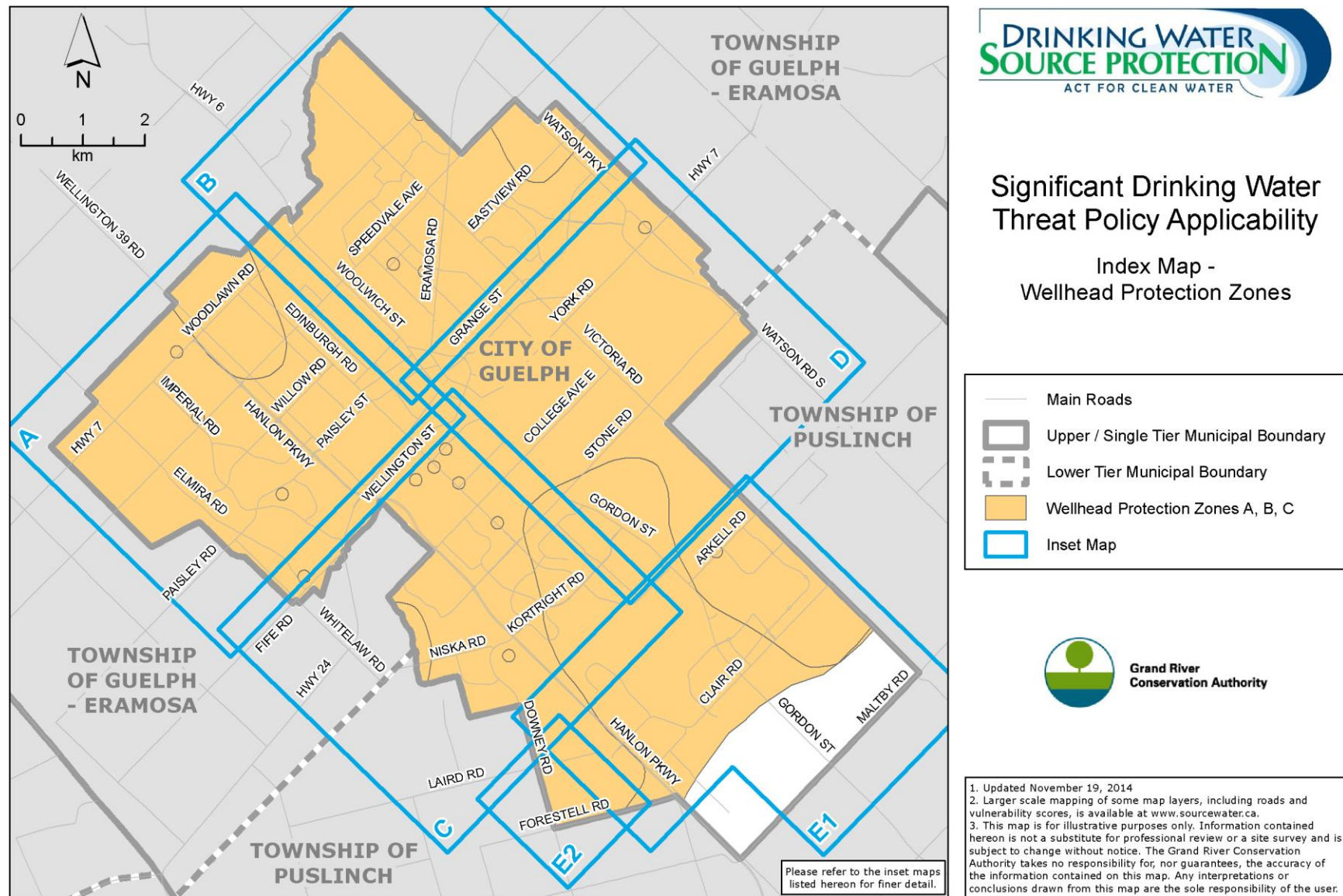
Table 2: Policy Summary Matrix

Policy #	Legal Effect (conform with, have regard to, non-binding)	Policy affects decisions under the Planning Act and Condominium Act, 1998 (Lists A and B)	Policy affects Prescribed Instrument decisions (Lists C and D)	Significant threat policies that impose obligations on municipalities, source protection authorities and local boards (List E)	Monitoring policies referred to in s.22 (2) of the CWA (List F)	Part IV Policies - Significant threat policies that are designated in the plan as requiring a Risk Management plan, are prohibited under s. 57, or to which s. 59 of the CWA applies (Lists G, H, and I)	Strategic Action Policies (List J)	Significant threat policies targeted to bodies other than municipalities, local boards or source protection authorities for implementation (List K)
CG-CW-1.1.1	Comply With	X	X	X		X		
CG-CW-1.1.2	Comply With	X		X		X		
CG-MC-1.2	Must Conform	X	X					
CG-CW-1.3	Comply With			X				
CG-CW-1.4	Comply With	X				X		
CG-MC-1.5	Must Conform	X						
CG-CW-1.6	Comply With			X				

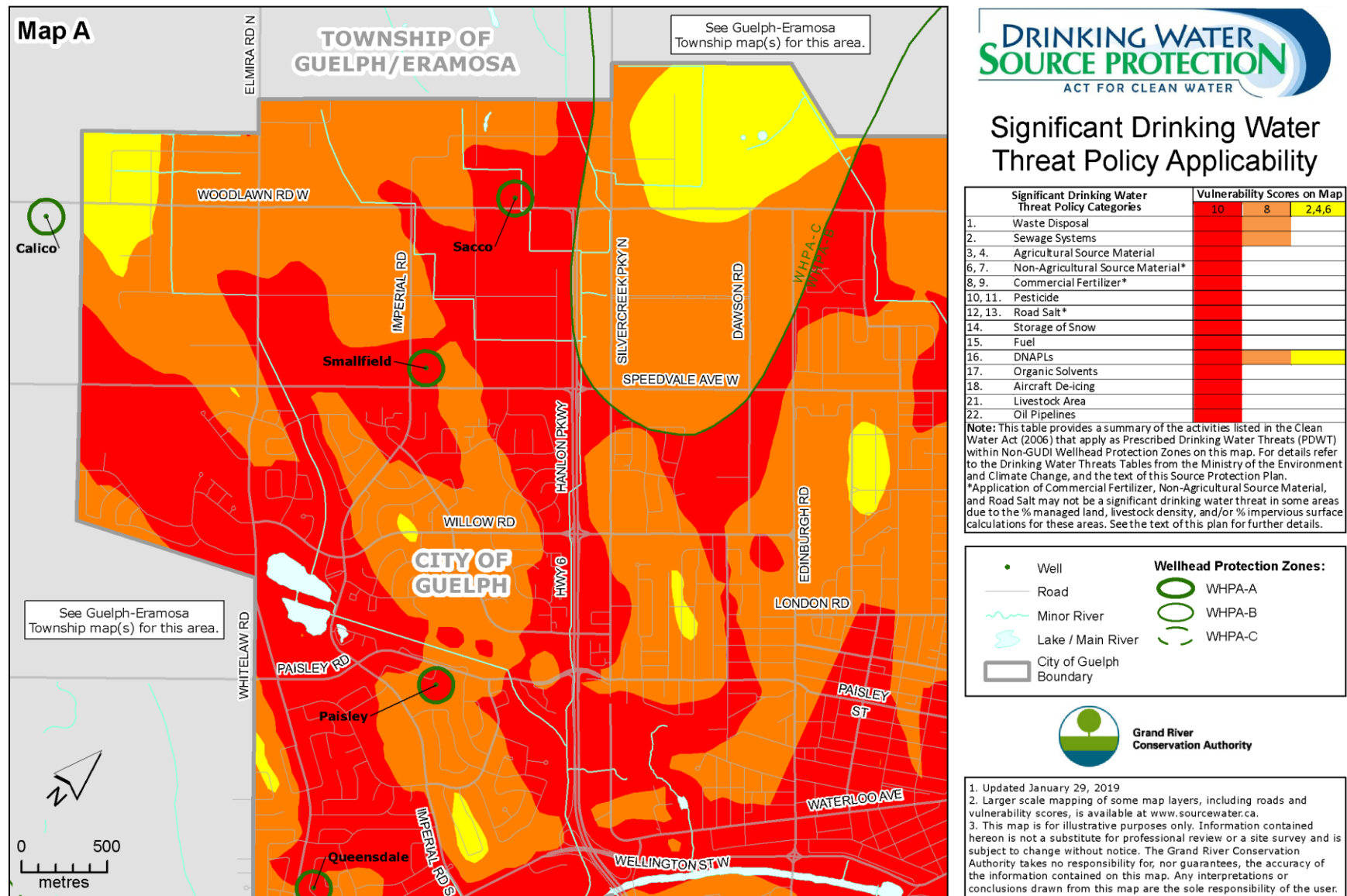
Policy #	Legal Effect (conform with, have regard to, non-binding)	Policy affects decisions under the Planning Act and Condominium Act, 1998 (Lists A and B)	Policy affects Prescribed Instrument decisions (Lists C and D)	Significant threat policies that impose obligations on municipalities, source protection authorities and local boards (List E)	Monitoring policies referred to in s.22 (2) of the CWA (List F)	Part IV Policies - Significant threat policies that are designated in the plan as requiring a Risk Management plan, are prohibited under s. 57, or to which s. 59 of the CWA applies (Lists G, H, and I)	Strategic Action Policies (List J)	Significant threat policies targeted to bodies other than municipalities, local boards or source protection authorities for implementation (List K)
CG-CW-1.7	Comply With			X				
CG-NB-1.8	Non-Binding							X
CG-CW-1.9	Comply With				X			
CG-CW-1.10	Comply With				X			
CG-CW-1.11	Comply With				X			
CG-CW-1.12	Comply With				X			
CG-NB-1.13	Non-binding						X	
CG-MC-1.15	Must Conform		X		X			
CG-NB-1.16	Non-binding							X
CG-MC-1.17	Must Conform	X						
CG-CW-1.18	Comply With			X				
CG-NB-1.19	Non-binding						X	X
CG-NB-1.20	Non-binding						X	
CG-NB-1.21	Non-binding						X	
CG-NB-1.22	Non-Binding						X	
CG-CW-1.23	Comply With			X				
CG-NB-1.24	Non-Binding						X	
CG-MC-1.25	Must Conform		X					
CG-NB-1.26	Non-Binding						X	
CG-CW-2.1	Comply With	X	X	X		X		
CG-MC-3	Must Conform		X					
CG-MC-4	Conform With					X		
CG-CW-5	Must Conform	X						
CG-CW-6	Comply With			X				
CG-CW-7	Comply With			X				
CG-MC-8	Must Conform	X						
CG-NB-9	Non-binding							X
CG-MC-10	Must Conform		X					
CG-MC-11	Must Conform		X					
CG-MC-12	Must Conform	X						
CG-CW-13	Comply With			X				
CG-MC-14	Must Conform		X					
CG-MC-15	Must Conform		X					
CG-MC-16	Must Conform		X					
CG-NB-16.1	Non-Binding							X
CG-CW-17	Comply With					X		
CG-NB-18	Non-binding							X
CG-MC-19	Must Conform		X					

Policy #	Legal Effect (conform with, have regard to, non-binding)	Policy affects decisions under the Planning Act and Condominium Act, 1998 (Lists A and B)	Policy affects Prescribed Instrument decisions (Lists C and D)	Significant threat policies that impose obligations on municipalities, source protection authorities and local boards (List E)	Monitoring policies referred to in s.22 (2) of the CWA (List F)	Part IV Policies - Significant threat policies that are designated in the plan as requiring a Risk Management plan, are prohibited under s. 57, or to which s. 59 of the CWA applies (Lists G, H, and I)	Strategic Action Policies (List J)	Significant threat policies targeted to bodies other than municipalities, local boards or source protection authorities for implementation (List K)
CG-CW-20	Comply With					X		
CG-NB-21	Non-binding							X
CG-MC-22	Must Conform		X					
CG-CW-23	Comply With					X		
CG-MC-24	Must Conform	X						
CG-MC-25	Must Conform		X					
CG-CW-26	Comply With					X		
CG-MC-27	Must Conform	X						
CG-CW-28	Comply With			X				
CG-MC-29	Must Conform	X						
CG-MC-30	Must Conform	X						
CG-CW-31	Comply With			X				
CG-MC-32.1	Must Conform	X						
CG-CW-32.2	Comply With					X		
CG-CW-33	Comply With			X				
CG-CW-34	Comply With					X		
CG-MC-35	Must Conform	X						
CG-MC-36	Must Conform		X					
CG-CW-37	Comply With					X		
CG-MC-38	Must Conform	X						
CG-CW-39	Comply With			X				
CG-CW-40	Comply With			X		X		
CG-MC-41	Must Conform	X						
CG-NB-42	Non-binding				X			X
CG-MC-43	Must Conform		X					
CG-CW-44	Comply With					X		
CG-NB-45	Non-binding							X
CG-NB-46	Non-binding				X			X

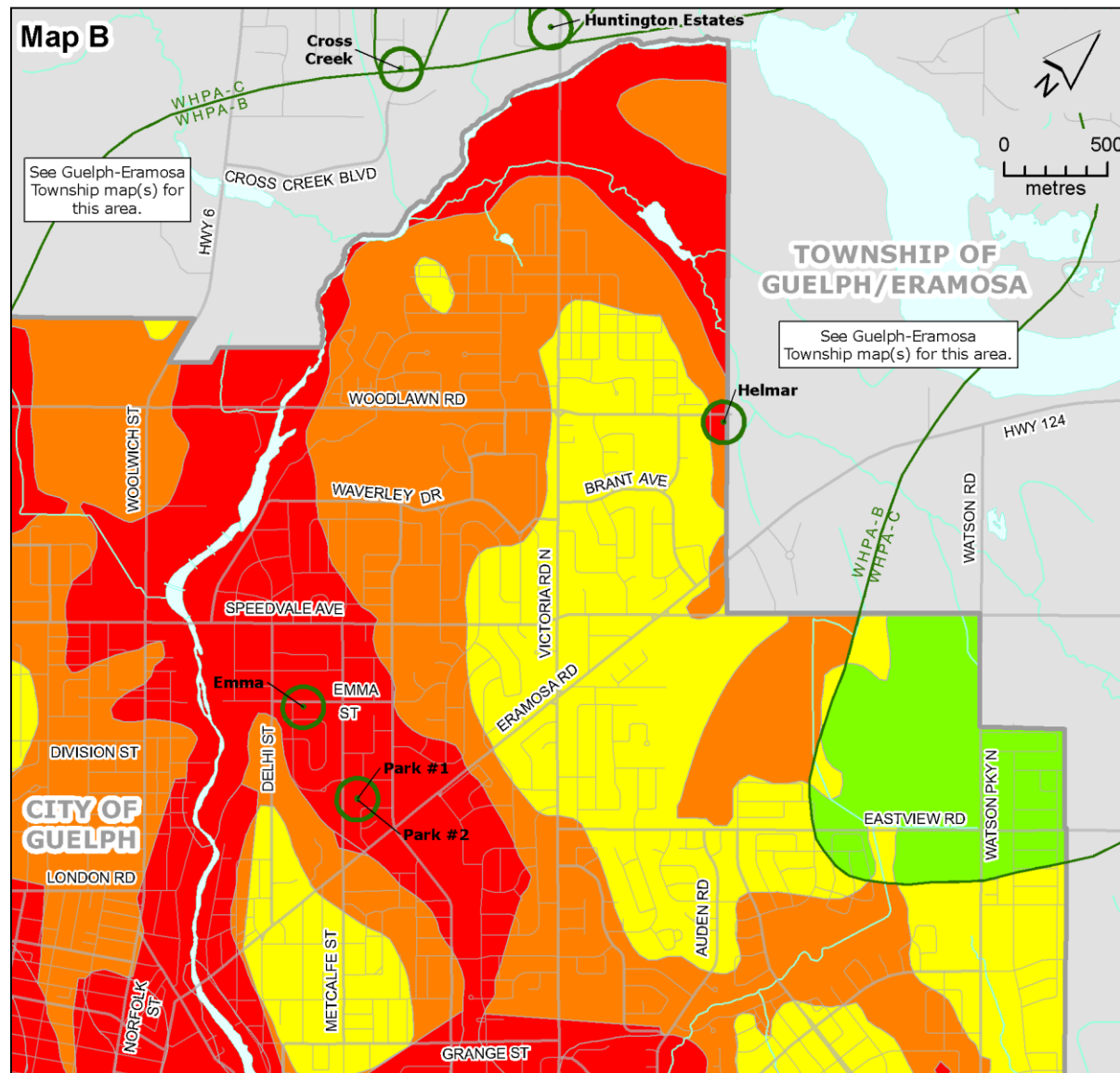
8.7 Schedule A: City of Guelph: Guelph Waterworks Well Supply Index Map



8.8 Schedule B: City of Guelph: Guelph Waterworks Well Supply, Map A



8.9 Schedule C: City of Guelph: Guelph Waterworks Well Supply, Map B

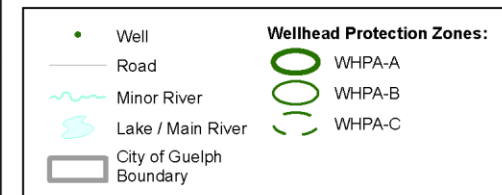


Significant Drinking Water Threat Policy Applicability

Significant Drinking Water Threat Policy Categories	Vulnerability Scores on Map		
	10	8	2,4,6
1. Waste Disposal			
2. Sewage Systems			
3, 4. Agricultural Source Material			
6, 7. Non-Agricultural Source Material*			
8, 9. Commercial Fertilizer*			
10, 11. Pesticide			
12, 13. Road Salt*			
14. Storage of Snow			
15. Fuel			
16. DNAPLs			
17. Organic Solvents			
18. Aircraft De-icing			
21. Livestock Area			
22. Oil Pipelines			

Note: This table provides a summary of the activities listed in the Clean Water Act (2006) that apply as Prescribed Drinking Water Threats (PDWT) within Non-GUDI Wellhead Protection Zones on this map. For details refer to the Drinking Water Threats Tables from the Ministry of the Environment and Climate Change, and the text of this Source Protection Plan.

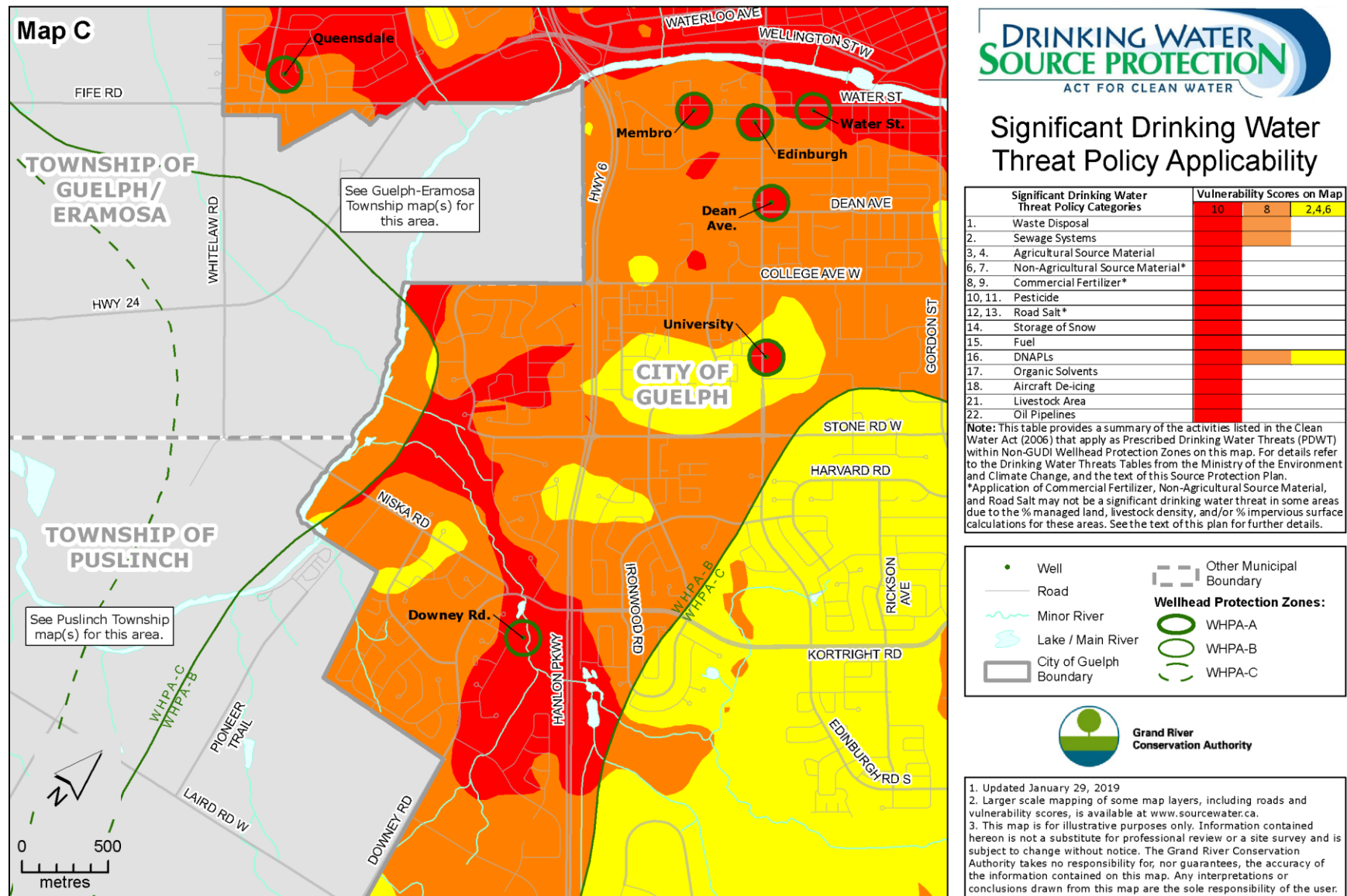
*Application of Commercial Fertilizer, Non-Agricultural Source Material, and Road Salt may not be a significant drinking water threat in some areas due to the % managed land, livestock density, and/or % impervious surface calculations for these areas. See the text of this plan for further details.



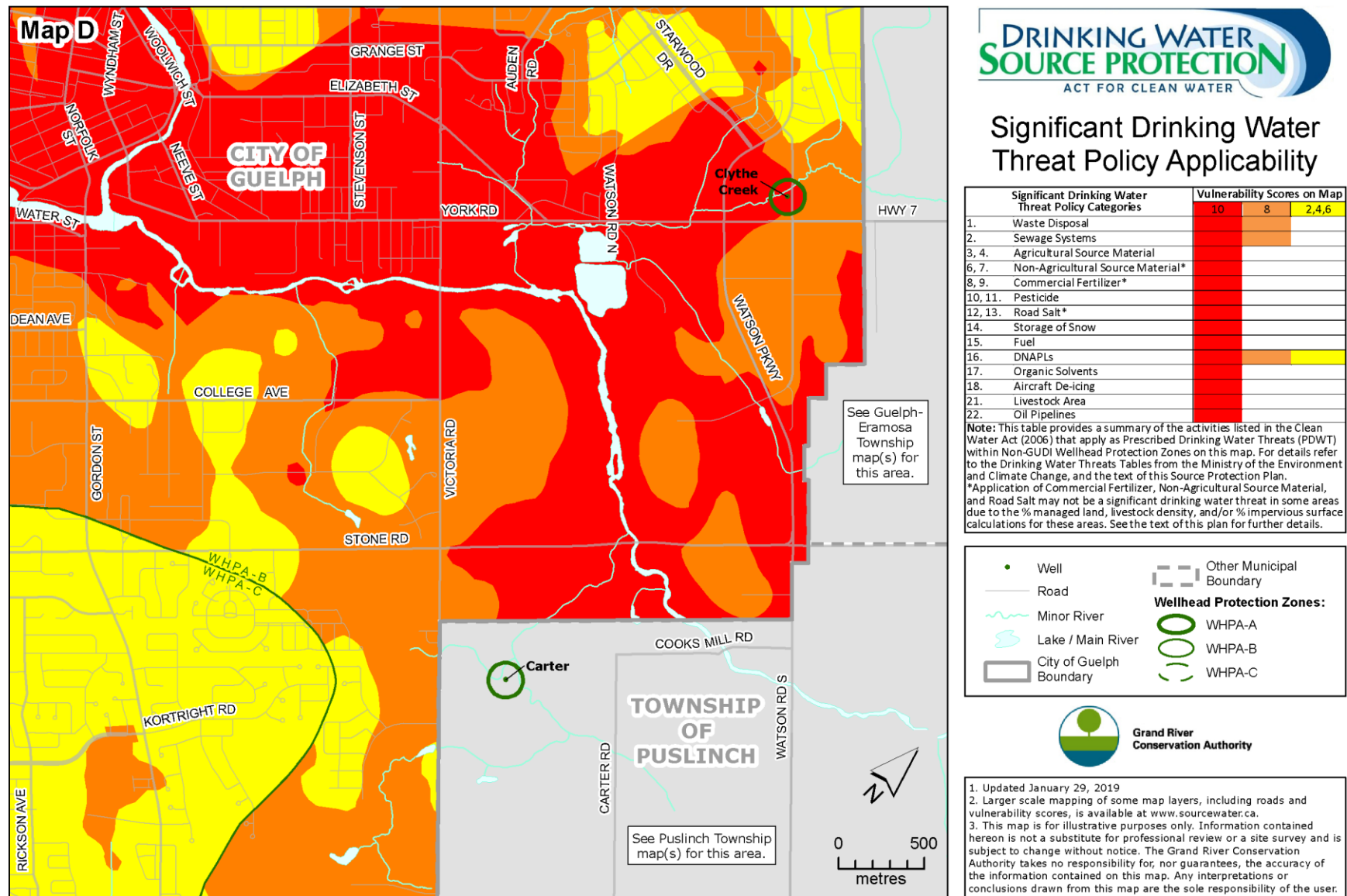
Grand River
Conservation Authority

1. Updated December 17, 2019
2. Larger scale mapping of some map layers, including roads and vulnerability scores, is available at www.sourcewater.ca.
3. This map is for illustrative purposes only. Information contained herein is not a substitute for professional review or a site survey and is subject to change without notice. The Grand River Conservation Authority takes no responsibility for, nor guarantees, the accuracy of the information contained on this map. Any interpretations or conclusions drawn from this map are the sole responsibility of the user.

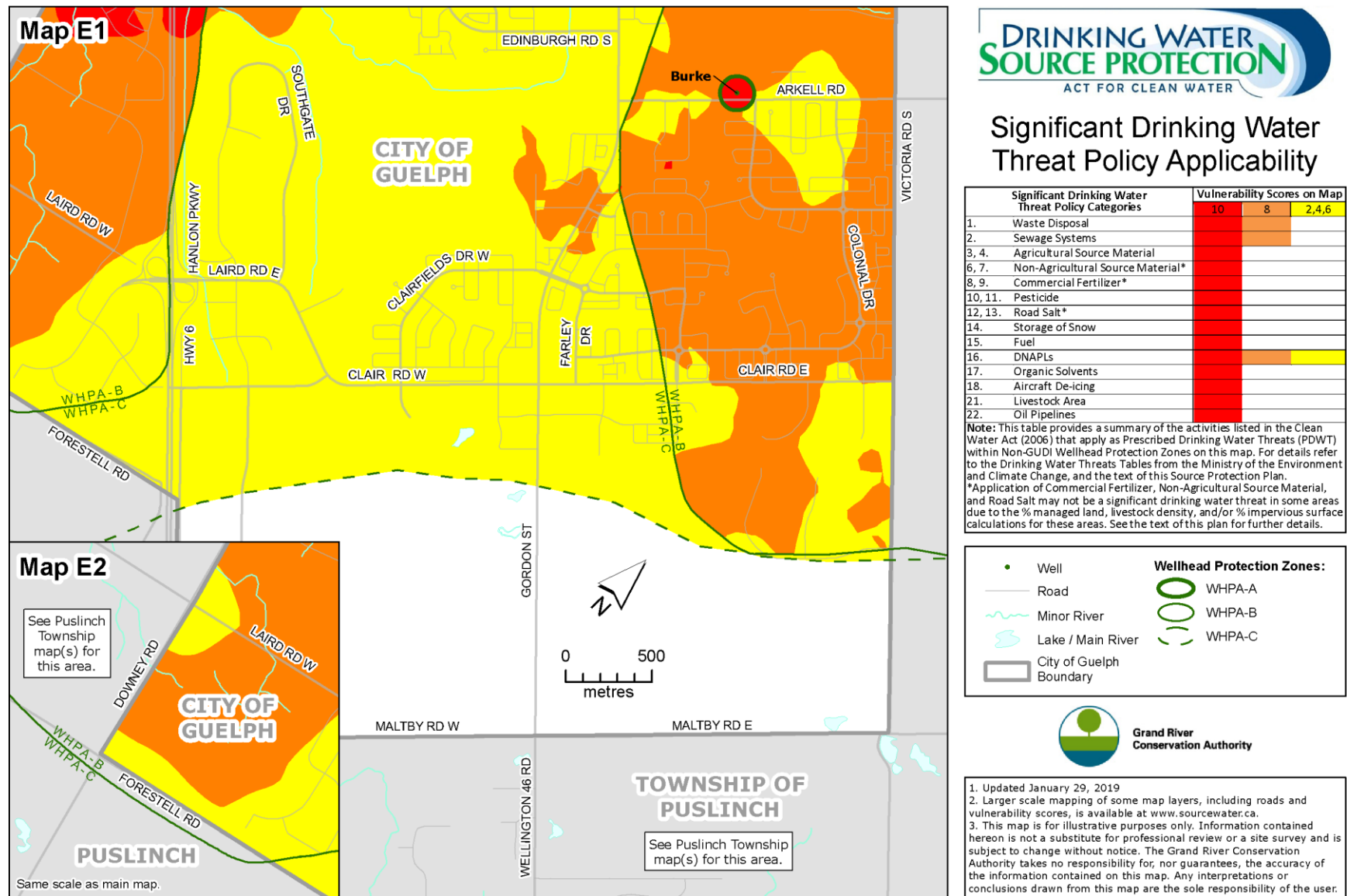
8.10 Schedule D: City of Guelph: Guelph Waterworks Well Supply, Map C



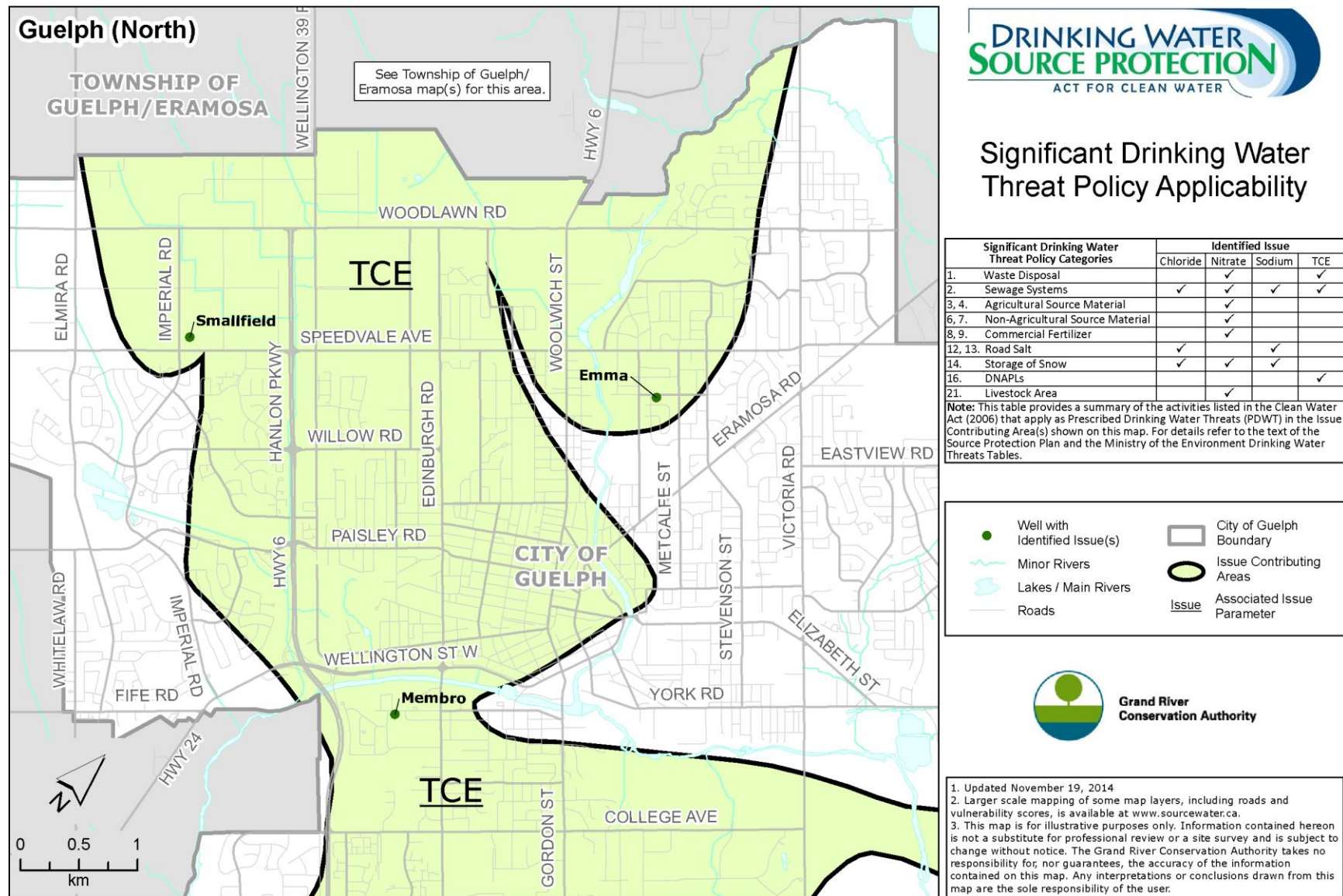
8.11 Schedule E: City of Guelph: Guelph Waterworks Well Supply, Map D



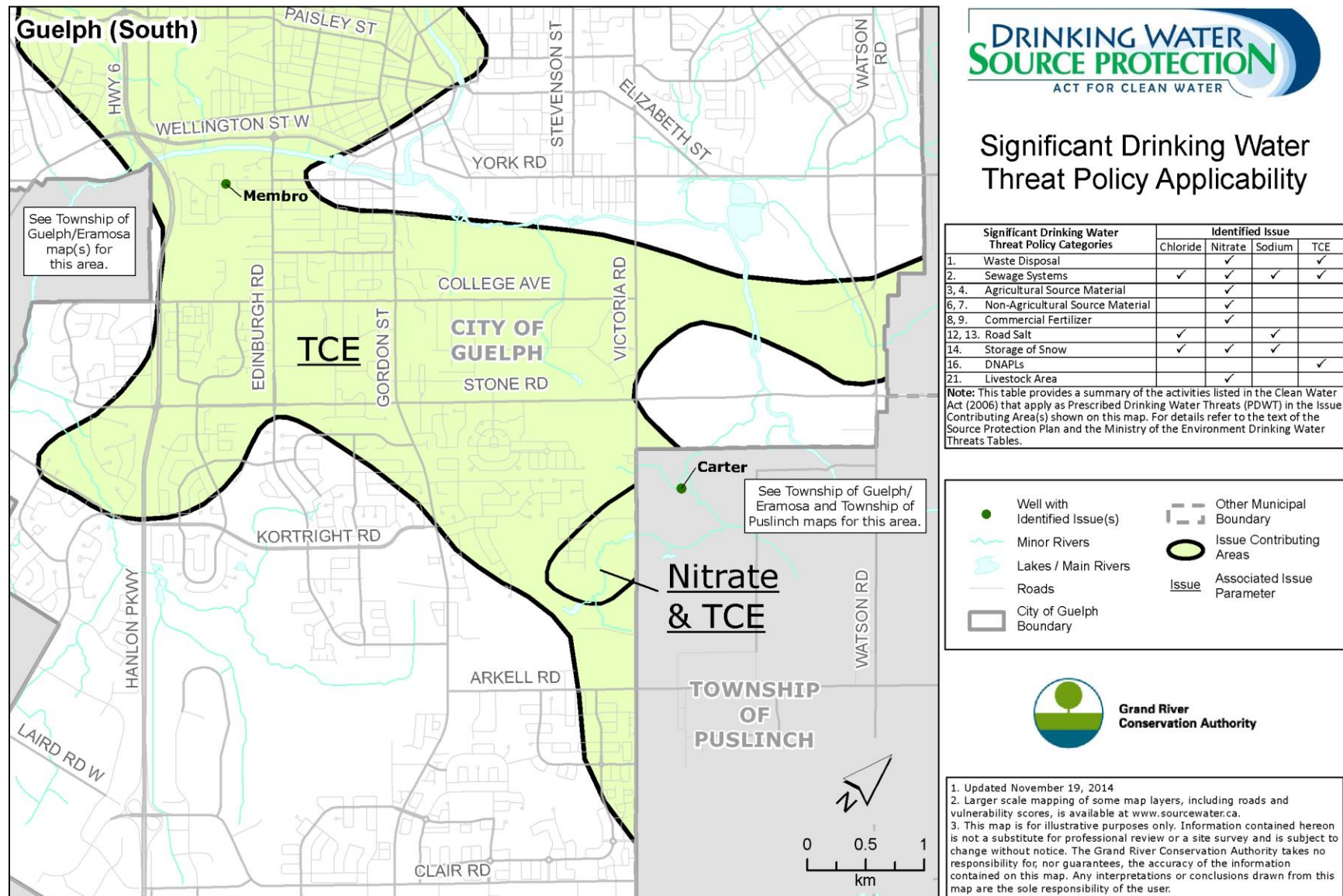
8.12 Schedule F: City of Guelph: Guelph Waterworks Well Supply, Map E



8.13 Schedule G: City of Guelph: Guelph Waterworks Issue Contributing Areas (North)



8.14 Schedule H: City of Guelph: Guelph Waterworks Issue Contributing Areas (South)



This page left blank intentionally.