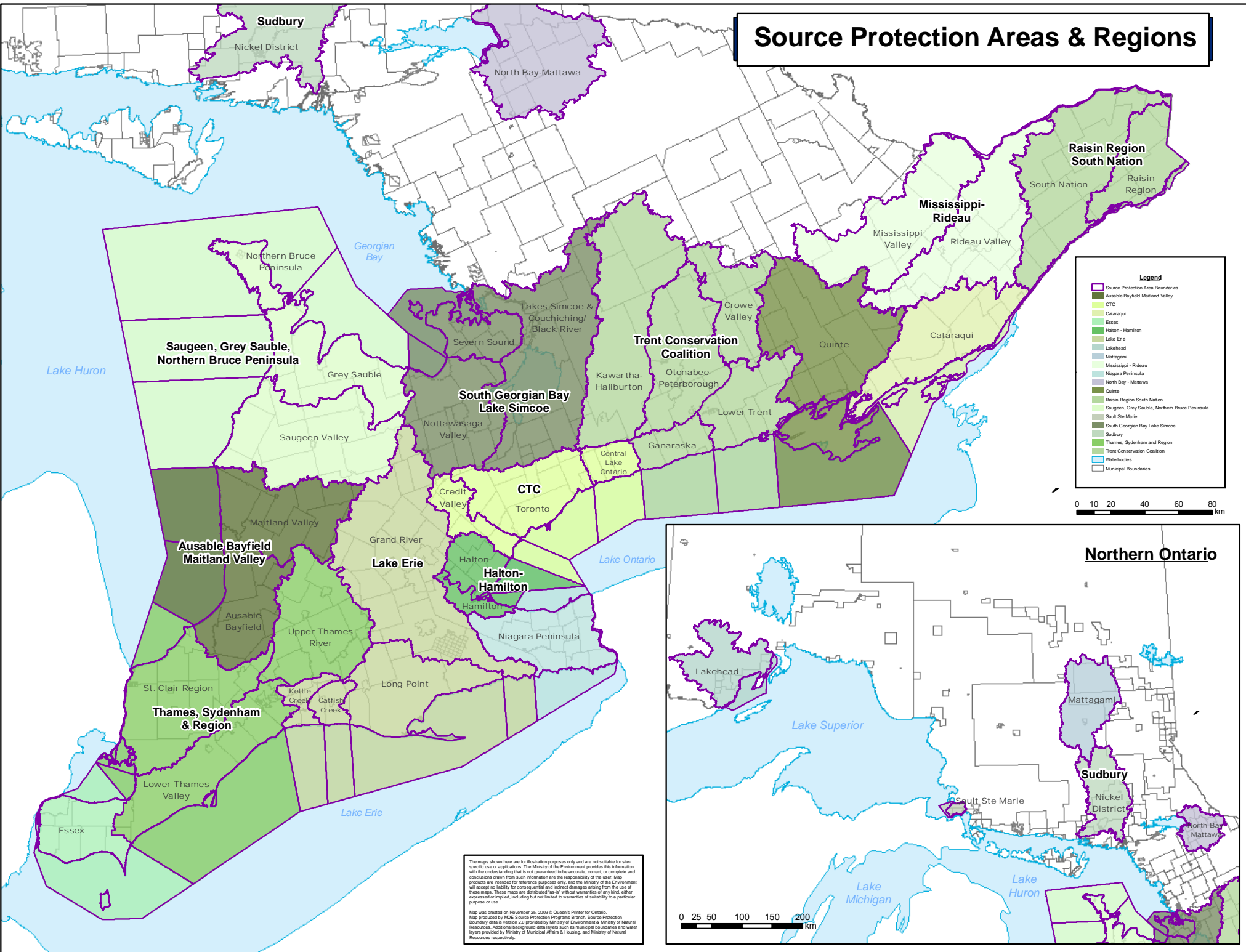


Source Protection Areas & Regions



The maps shown here are for illustration purposes only and are not suitable for site-specific use or applications. The Ministry of the Environment provides this information with the understanding that it is not guaranteed to be accurate, correct, or complete and conclusions drawn from such information are the responsibility of the user. Map products are intended for reference purposes only, and the Ministry of the Environment will accept no liability for consequential and indirect damages arising from the use of these maps. These maps are distributed "as is" without warranties of any kind, either expressed or implied, including but not limited to warranties of suitability to a particular purpose or use.

Map was created on November 25, 2009 © Queen's Printer for Ontario.
 Map produced by MDE Source Protection Programs Branch, Source Protection Boundary data is version 2.0 provided by Ministry of Environment & Ministry of Natural Resources. Additional background data layers such as municipal boundaries and water layers provided by Ministry of Municipal Affairs & Housing, and Ministry of Natural Resources respectively.

