

## GRAND RIVER SOURCE PROTECTION AUTHORITY

**REPORT NO. SPA-08-07-04**

**DATE:** August 31, 2007

**TO:** Members of the Grand River Source Protection Authority

**SUBJECT:** Groupings for Municipal Representation on the Source Protection Committee

---

### **RECOMMENDATION:**

THAT the Grand River Source Protection Authority approve the seven municipal groupings for municipal representation on the Lake Erie Region Source Protection Committee;

AND THAT the Grand River Source Protection Authority direct staff to send a notice of the municipal groupings to the clerk of each municipality in the Lake Erie Source Protection Region before the end of the day on September 4, 2007, with instructions to jointly select a municipal representative within each group.

### **SUMMARY:**

Ontario Regulation 288/07 (O. Reg. 288/07) on Source Protection Committees under the *Clean Water Act, 2006* requires that the Lead Source Protection Authority (Conservation Authority) divide the municipalities in the Lake Erie Source Protection Region into groups and assign each group a number of members on the SPC. As required by the regulation, the Source Protection Authority consulted with municipalities from July 13 to August 15, 2007. The final list of groups must be sent to municipalities prior to September 4, 2007.

### **REPORT:**

O. Reg. 288/07, *under the Clean Water Act, 2006* requires that the Lake Erie Region Source Protection Committee have 7 municipal representatives. Because there are more than 7 municipalities in the Lake Erie Region, the regulation requires that the Grand River Source Protection Authority, as the Lead SPA, divide municipalities in the Lake Erie Region into groups for the purposes of municipal representation on the Source Protection Committee.

On July 13, 2007 a letter was sent to all municipalities describing the proposed municipal groupings and the rationale used to develop them. Municipalities were asked to provide comments on the groupings to the Grand River Conservation Authority by August 15, 2007. The proposed municipal groupings are listed in Table 1 below, and shown on a map of the Lake Erie Region in Attachment 1.

The suggestions for municipal groups (as shown in previous reports) are based on the following principles:

- There are no well or wellhead protection area or intake protection zone issues across municipal boundaries within a group;
- Municipalities within a group have similar water supply sources (i.e. wells, river intakes, Great Lakes intakes);
- There is sufficient proximity that municipalities within a group have historically had opportunity to work together; and

- Municipalities within a group have good working relationships.

**Table 1: List of Municipal Groupings**

Group	Municipalities
1	Grey County, Township of Southgate Dufferin County, Township of Melancthon, Township of Amaranth, East Luther-Grand Valley, Township of East Garafraxa Wellington County, Township of Wellington North, Township of Mapleton, Township of Centre Wellington, Town of Erin, Township of Guelph-Eramosa, Township of Puslinch Halton Region, Town of Milton, Town of Halton Hills
2	City of Guelph
3	Region of Waterloo, Wilmot Township, Wellesley Township, Woolwich Township, North Dumfries Township, City of Waterloo, City of Kitchener, City of Cambridge
4	City of Brantford County of Brant City of Hamilton
5	Haldimand County Norfolk County
6	Perth County, Township of Perth East, Township of North Perth Oxford County, Township of Blandford-Blenheim, East-Zorra Tavistock, Township of Norwich, City of Woodstock, Township of Southwest Oxford, Tillsonburg
7	Elgin County, Municipality of Bayham, Township of Malahide, Town of Aylmer, Municipality of Central Elgin, Township of Southwold Middlesex County, Township of Thames Centre, Township of Middlesex Centre City of St. Thomas City of London

As of August 21, seventeen municipalities provided comments on the proposed groupings. Attachment 2 of this report provides a summary of the comments received to date. Of the 17 comments, 15 were supportive of the groupings as proposed. Two municipalities did not support being grouped with other municipalities. Norfolk County recognized the difficulty in developing the groupings and accepted the rationale provided, but continued to request that they have their own representative due to the complexity and diversity of drinking water sources in Norfolk and ongoing water quantity issues in the Norfolk Sand Plain. Additionally, water services staff at the City of Brantford requested that the City have its own representative because of the uniqueness of the Brantford surface water intake in the watershed.

Although it is recognized that grouping Norfolk County with Haldimand County is not ideal due to differences in municipal drinking water sources, there are no cross-boundary drinking water issues to contend with between the two municipalities.

Similarly, grouping the City of Brantford with the County of Brant and the City of Hamilton presents fewer cross-boundary municipal drinking water issues than other groupings, and builds on the working relationships that the City of Brantford and the County of Brant have developed.

Having considered all comments received to date, the Lake Erie Region Management Committee recommends that the municipal groups be finalized as proposed.

**FINANCIAL IMPLICATIONS:**

Source Protection Committee members will be paid per diems and reimbursed for travel/mileage

expenses by the Grand River Conservation Authority, from the annual source protection funding received from the Ministry of Natural Resources.

The provincial government has committed to pay 100% of the cost of studies required to develop the first round of source protection plans and to build capacity in the Conservation Authorities to undertake their new roles.

**OTHER DEPARTMENT CONSIDERATIONS:**

Not Applicable

Prepared by:



---

Lorrie Minshall  
Source Protection Program Director

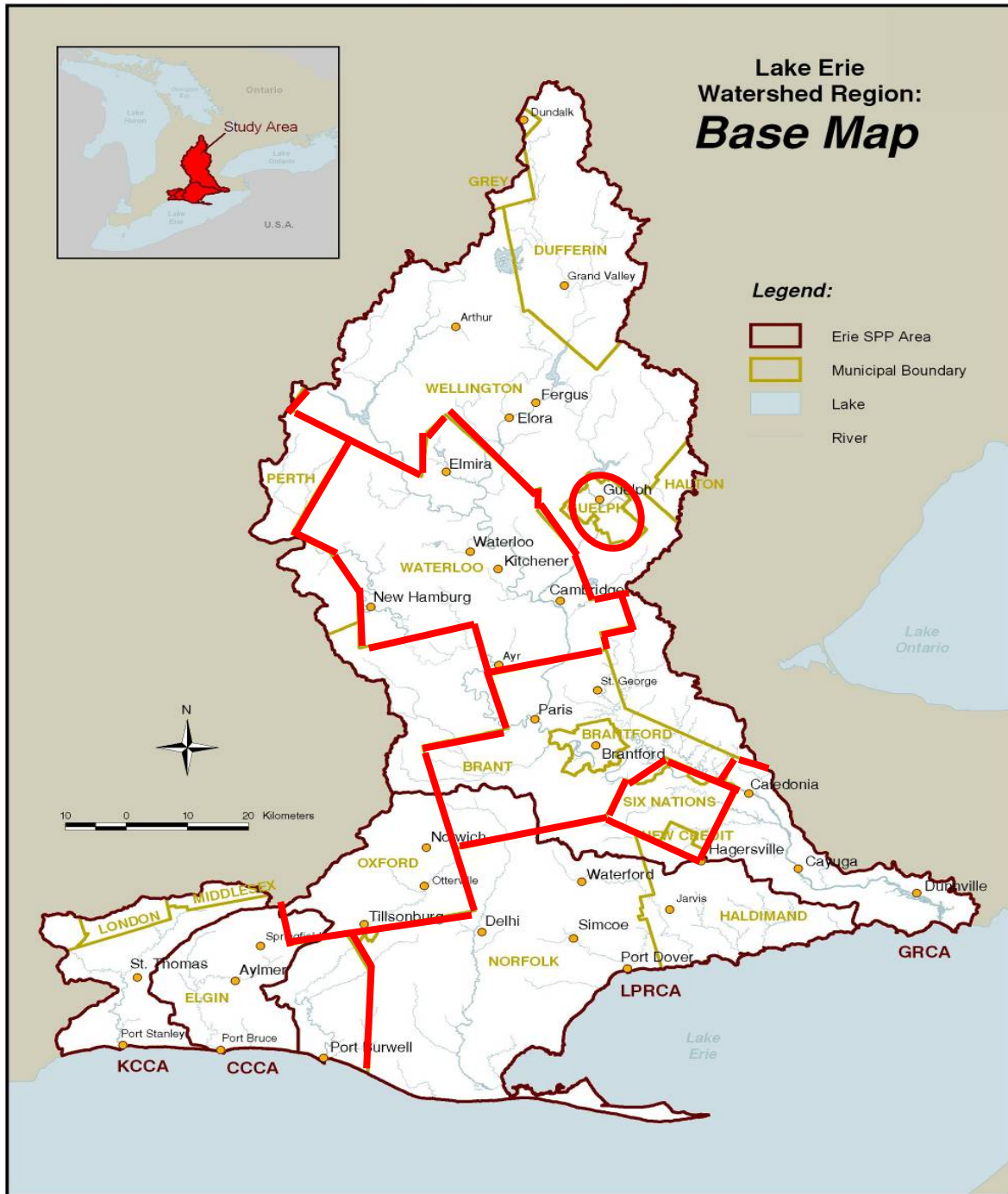
Approved by:



---

Paul Emerson  
Chief Administrative Officer

# Attachment 1: Municipal Source Protection Committee Representation Groups



## Attachment 2: Summary of Municipal Comments on Municipal Groupings

Region/Municipality	Response		Actions/Recommendations/Comments
	Supportive	Not Supportive	
City of Guelph	X		Wanted to impress the importance that the City of Guelph have representation on the committee. See letter for details.
County of Brant	X		Requested that we advise of the process for the City of Hamilton, City of Brantford, and the County of Brant to determine its responsibilities. Letter to be sent.
County of Oxford	X		County would like to make the nomination of an individual to serve to represent the grouping of Perth and Oxford municipalities.
Elgin County	X		Supportive of Malahide's proposed approach to representative selection.
Middlesex County	X		As only a small part of Middlesex County is included in this Source Protection Region, they do not feel they need to be involved in the nominating process and wish only to be advised of who their representative is. Their response is to be forwarded to facilitator of the Elgin/Middlesex/London group.
Municipality of Bayham	X		That Wayne Casier be nominated as a potential Municipal representative for Elgin/Middlesex
Municipality of Central Elgin	X		Would respectfully like to request that a representative from Central Elgin fills the seat for reasons stated in the letter.
Township of Malahide	X		Council resolution recommending that the area representatives for the municipalities be appointed from Kettle Creek CA or Cattfish Creek CA. Lorrie called CAO and advised per regs SPC members cannot be CA board member. Inquired about rotating the member every 3 or 4 years.
Township of Southwold	X		Staff call to inquire about eligibility (re Malahide Twps request)
County of Perth			
Town of North Perth			
Township of Perth East	X		Would like to work with Oxford to actively participate in nominating the individual who will represent the area.
Region of Halton	X		Small mun area in Region - do not intend to participate on SPC. Will participate on municipal water services working group. Encourage municipal reps to represent 'municipal interest' broadly rather than local interest.
Norfolk County		X	Norfolk would like to have their own representation, not a combined representation.
Haldimand County		X	Expect request to designate an "other" seat for the Grand Valley Water Board
City of Brantford		X	Water services staff at the City of Brantford requested that the City have its own representative because of the uniqueness of the Brantford surface water intake in the watershed. Staff inquired about rotating the member every 2 or 3 years.
Region of Waterloo			
City of Cambridge			
City of Kitchener			
City of Waterloo	X		Support the groupings. No further comments.
Township of Wellesley			Lorrie attended Council to answer questions.
Township of Wilmot			
Township of Woolwich			
Township of North Dumfries	X		CAO was concerned with disproportionate representation of smaller jurisdictions, but understands it is a diverse study area and is satisfied with the groupings.
Wellington County			
Township of Wellington North			
Township of Centre Wellington			
Township of Mapleton			
Township of Guelph/Eramosa			
Township of Puslinch	X		No further comments.
Town of Erin			
City of Hamilton			
City of London			
City of St. Thomas			
City of Woodstock			
County of Dufferin			
Township of Melancthon			L. Minshall attended Council to answer questions.
Township of Amaranth			
Township of East Garafraxa			
Township of East Luther Grand Valley			
Grey County			
Township of Southgate			
Norwich Township			
Town of Aylmer			
Town of Halton Hills			
Town of Milton	X		Supportive, but deferred comment to Halton Region.
Town of Tillsonburg			
Township of Blandford-Blenheim			
Township of East-Zorra Tavistock			
Township of South-West Oxford			
Township of Middlesex Centre			
Township of Thames Centre			