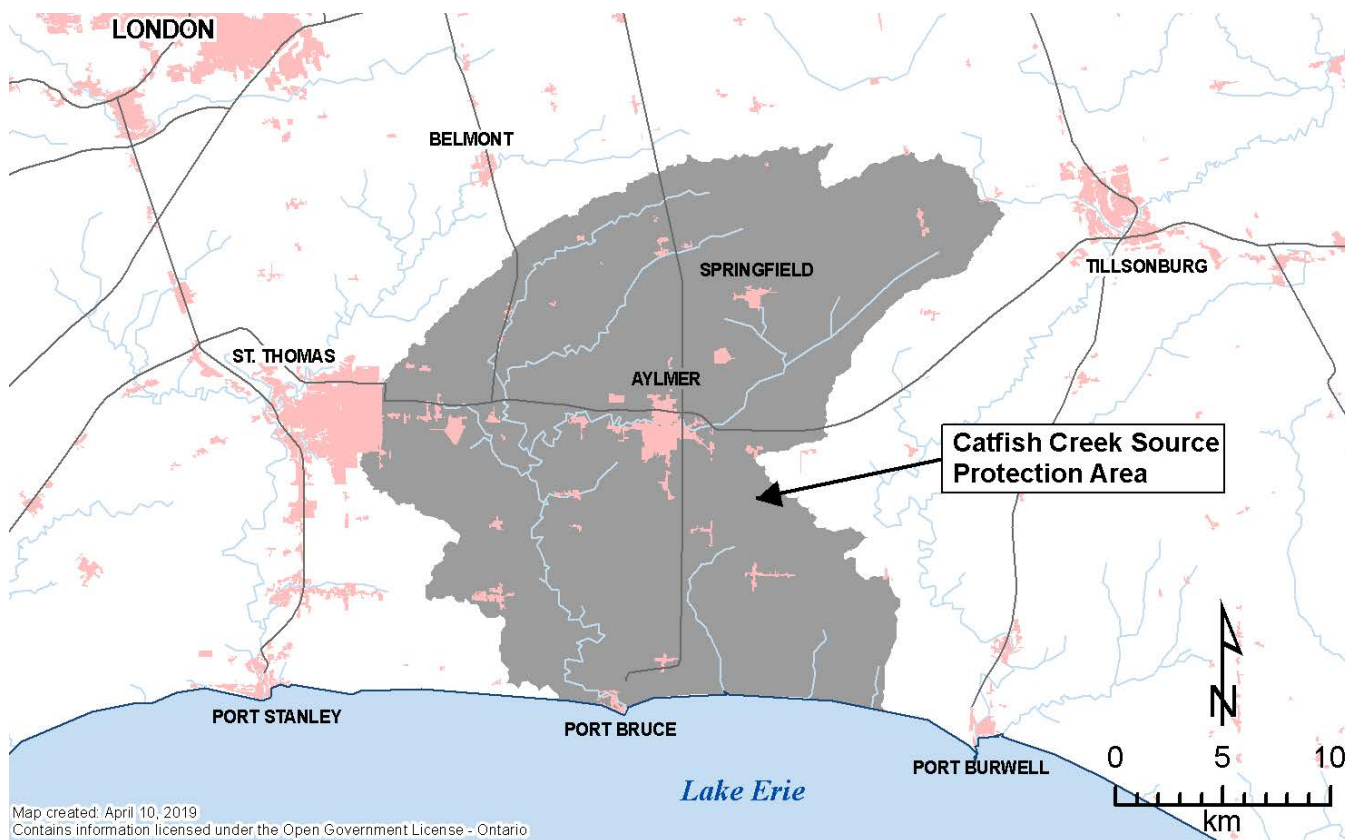


# 2020 Source Protection Annual Progress Report

## I. Introduction

This annual progress report outlines the progress made in implementing the source protection plan for the Catfish Creek Source Protection Area, as required by the Clean Water Act and regulations.

We acknowledge and recognize the tremendous efforts made by our local municipality, stakeholders and Source Protection Committee in the development of the Source Protection Plan and implementation of Source Protection policies.



## II. A message from your local Source Protection Committee

- P : Progressing Well/On Target**– The majority of the source protection plan policies have been implemented and/or are progressing.
- S : Satisfactory** – Some of the source protection plan policies have been implemented and/or are progressing.
- L : Limited progress** – A few of the source protection plan policies have been implemented and/or are progressing.

Nineteen existing significant drinking water threats were identified in the Catfish Creek Source Protection Area when the plan took effect. Since implementation of the plan, 36% of confirmed significant drinking water threats have been addressed. Progress made would be 100%; however, the septic system inspection program was handed over from Public Health to the area municipality and due to COVID-19 restrictions, inspections were not completed in 2020. All systems are scheduled to be inspected in the next inspection cycle. All legally binding plan policies that address significant drinking water threats are implemented or in progress.

### III. Our Watershed

To learn more, please read our Catfish Creek Assessment Report and Source Protection Plan.

The Catfish Creek Source Protection Area (watershed) includes Catfish Creek and its tributaries. These watercourses drain 490 square kilometres of agricultural and urban lands before entering Lake Erie at Port Bruce. The area includes parts of Elgin and Oxford counties.

The watershed has one municipal drinking water system in the village of Brownsville in the Township of Southwest Oxford. The system is comprised of two wells serving about 300 people. A number of communities are also serviced with municipal water from the Elgin Area Primary Water Supply.

Nineteen significant drinking water threat activities were identified in the Catfish Creek Source Protection Area when the plan went into effect, all within a 100 metre radius around the two wells. Since that time all significant drinking water threats have been addressed.

## IV. At a Glance: Progress on Source Protection Plan Implementation

### 1. Source Protection Plan Policies

P: Progressing Well/On Target

All of the legally-binding policies (100%) that address significant drinking water threats are implemented or in progress.

### 2. Municipal Progress: Addressing Risks on the Ground

One municipality (Oxford County) in the Catfish Creek Source Protection Area has vulnerable areas where significant drinking water threat policies apply.

P: Progressing Well/On Target

Oxford County is required to review and update their Official Plan to ensure it conforms with the Catfish Creek Source Protection Plan the next time they undertake an Official Plan review under the Planning Act. Oxford County is in the process of amending its Official Plan.

### 3. Septic Inspections

S: Satisfactory

Nine on-site sewage systems require inspections in accordance with the Ontario Building Code; however, none of the systems were inspected during the reporting period because of COVID-19 restrictions and a change in inspection agencies. These systems are scheduled to be inspected during the next inspection round.

### 4. Risk Management Plans

P: Progressing Well/On Target

One risk management plan has been negotiated in the Catfish Creek Source Protection Area since the source protection plan took effect. There are currently no risk management plans needed or pending.

No inspections were undertaken in the Catfish Creek Source Protection Area in 2020.

## 5. Provincial Progress: Addressing Risks on the Ground

P: Progressing Well/On Target

Ontario ministries are reviewing applications for new or amended and previously issued provincial approvals (e.g., Environmental compliance approvals issued under the Environmental Protection Act) where they have been identified as a tool in the Catfish Creek Source Protection Plan to address activities that pose a significant risk to source water. The provincial approvals are either being issued, denied, amended, or revoked, where necessary, to conform with plan policies. Catfish Creek Source Protection Plan policies set out a time line of 3 years to complete the review and make any necessary changes to previously issued approvals, the timeline for new or amended PIs has been in effect since the approval date of our plan. Thus, while ministries are implementing a review protocol to screen all (100%) applicable approval applications, they have completed this for 100% of previously issued provincial approvals in the Catfish Creek Source Protection Area.

## 6. Source Protection Awareness and Change in Behaviour

Oxford County has noted a change in the behaviour of people in the community: they do not seem as apprehensive when discussing the Source Water Protection Program. This seems to indicate a better baseline understanding of what the program is and what the goals are.

## 7. Source Protection Plan Policies: Summary of Delays

Inspections of some on-site sewage systems were delayed in 2020 due to COVID-19 restrictions and a change in inspection agencies. All systems are scheduled to be inspected in the next inspection cycle.

## 8. Source Water Quality: Monitoring and Actions

No issues have been identified in the local science-based assessment report regarding the quality of the source(s) of municipal drinking water in the Catfish Creek Source Protection Area.

## 9. Science-based Assessment Reports: Work Plans

An order was received from the Ministry on July 19, 2019 regarding the Section 36 workplan for updates to the Catfish Creek Assessment Report and Source Protection Plan.

Examples of tasks that are included in the Section 36 workplan:

- technical rule changes, e.g., review and consider Phase II Technical Rule changes for incorporation into the assessment report and source protection plan
- transport pathway changes, e.g., consider any identified transport pathways for incorporation into the assessment report and source protection plan

- climate change considerations, e.g., review and assess potential climate change additions to the technical framework and make appropriate updates as applicable to the assessment report and source protection plan

## 10. More from the Watershed

To learn more about the Catfish Creek Source Protection Area, visit <http://www.sourcewater.ca>