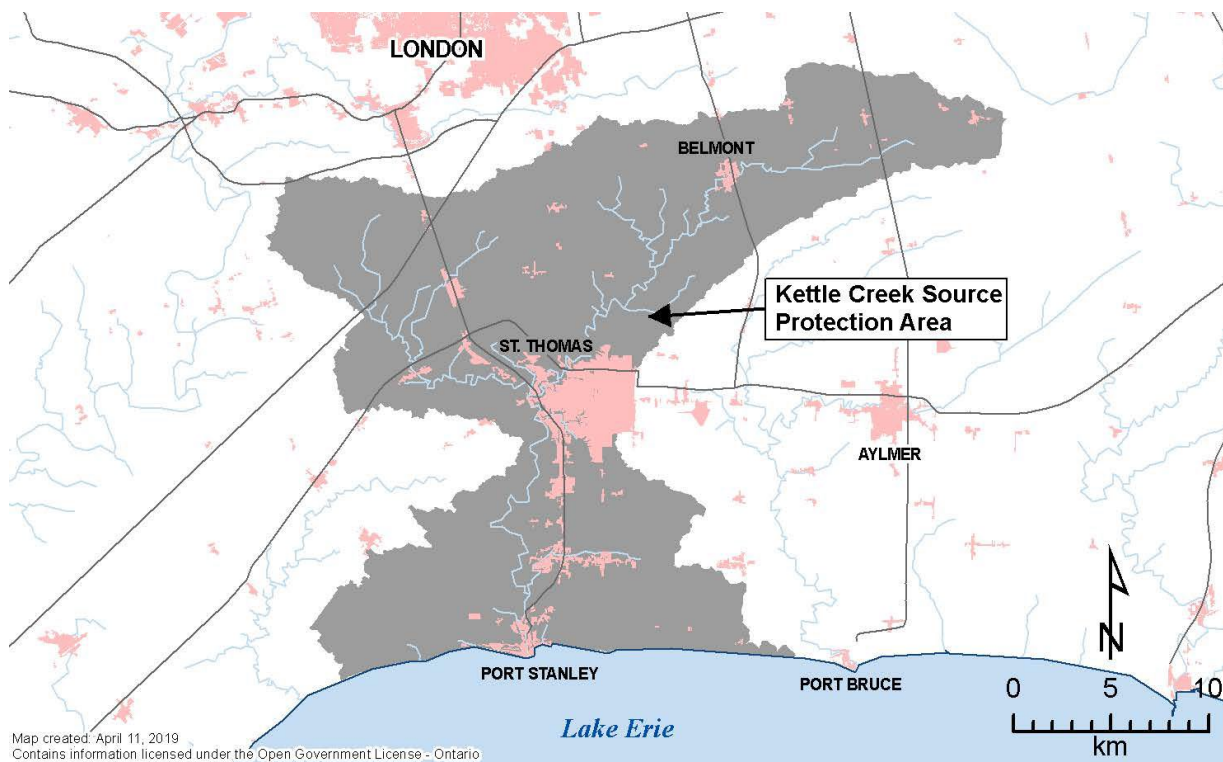


# Kettle Creek Source Protection Annual Progress Report 2022

## I. Introduction

This annual progress report outlines the progress made in implementing the source protection plan for the Kettle Creek Source Protection Area, as required by the Clean Water Act and regulations.

We acknowledge and recognize the tremendous efforts made by our local municipality, stakeholders and Source Protection Committee in the development of the Source Protection Plan and implementation of source protection policies.



## II. A message from your local Source Protection Committee

**P: Progressing Well/On Target** – The majority of the source protection plan policies have been implemented and/or are progressing.

Only two existing significant drinking water threats have been identified in the Kettle Creek Source Protection Area since the Source Protection Plan came into effect. Both threats (100%) have been addressed: one no longer exists and the other has been managed through a Risk Management Plan (RMP). All legally-binding plan policies that address significant drinking water threats are either implemented, in progress, or implemented because policy outcomes have been evaluated and require no further action(s).

## III. Our Watershed

To learn more, please read our Kettle Creek Assessment Report and Source Protection Plan.

The Kettle Creek Source Protection Area (watershed) includes Kettle Creek and its tributaries. These watercourses drain 520 square kilometres of agricultural and urban lands before entering Lake Erie at Port Stanley. The area includes parts of Elgin County, Middlesex County, the City of St. Thomas, and the City of London.

The watershed has two municipal drinking water systems: two wells in Belmont and the Elgin Area Primary Water Supply System (EAPWSS) in Port Stanley.

## IV. At a Glance: Progress on Source Protection Plan Implementation

### 1. Source Protection Plan Policies and Addressing Significant Risks

P: Progressing Well/On Target

All of the legally-binding policies (100%) that address significant drinking water threats are either implemented, in progress, or implemented because policy outcomes have been evaluated and require no further action(s).

### 2. Municipal Progress: Addressing Risks on the Ground

P: Progressing Well/On Target

Three municipalities (Malahide, Central Elgin and Thames Centre) in the Kettle Creek Source Protection Area have vulnerable areas where significant drinking

water threat policies apply. These municipalities are required to review and update their Official Plan to ensure it conforms with the Kettle Creek Source Protection Plan the next time they undertake an Official Plan review under the Planning Act. The Municipality of Thames Centre has completed their Official Plan update; the Municipality of Central Elgin and Township of Malahide Official Plan updates are currently in progress.

### 3. Septic Inspections

Not applicable as there are no on-site sewage systems requiring inspection in the Kettle Creek Source Protection Area.

### 4. Risk Management Plans

P: Progressing Well/On Target

One Risk Management Plan has been negotiated in the Kettle Creek Source Protection Area since the Source Protection Plan came into effect. There are currently no risk management plans needed or pending.

No inspections were carried out or planned by a Risk Management Official/Inspector for prohibited or regulated activities in the 2022 annual reporting period. In the past, there has been a 100% compliance rate with the risk management plans negotiated in the Kettle Creek Source Protection Area.

### 5. Provincial Progress: Addressing Risks on the Ground

P: Progressing Well/On Target

Ontario Provincial ministries including Ministry of the Environment, Conservation and Parks (MECP), Ministry of Natural Resources and Forestry (MNR), Ministry of Transportation Ontario (MTO) and Ontario Ministry of Agriculture, Food and Rural Affairs (OMAFRA) implement source protection policies that use prescribed instruments to manage significant threat activities.

Ontario ministries review applications for new or amended provincial approvals (i.e., prescribed instruments, such as Environmental Compliance Approvals issued under the Environmental Protection Act) where they have been identified as a tool in the Kettle Creek Source Protection Plan to address activities that pose a significant risk to source water. The Province has established Standard Operating Policies to ensure that approvals take into account the science generated through the Drinking Water Source Protection Program and policies in the Source Protection Plan. Provincial approvals are issued, denied, amended, or revoked to conform to plan policies. Where necessary, conditions are added to approvals to ensure that the activity does not pose a significant threat to sources of drinking water.

The Ministries have reported 100% completion of previously issued Provincial approvals in the Kettle Creek Source Protection Area.

## 6. Source Protection Awareness and Change in Behaviour

There have been no measurable or quantifiable outcomes reported for the 2022 annual reporting period.

## 7. Source Protection Plan Policies: Summary of Delays

Policy PS-NB-8.1 has not been implemented because of communication challenges among the implementing bodies. The policy states that the municipality should provide mapping of the Intake Protection Zone (IPZ) to the Canadian Coast Guard and that the Elgin Area Primary Water Supply System Board and the Canadian Coast guard work together to develop a protocol to report boating accidents within the IPZ. Mapping was provided to the Canadian Coast Guard. No Protocol has been developed between the Canadian Coast Guard and Elgin Area Water Supply System Board. Policy is being reviewed and will likely be amended through s. 36 plan update.

## 8. Source Water Quality: Monitoring and Actions

No issues have been identified in the local science-based assessment report regarding the quality of the source(s) of municipal drinking water in the Kettle Creek Source Protection Area.

## 9. Science-based Assessment Reports: Work Plans

An order was received from the Ministry on July 22, 2019 regarding the Section 36 workplan for updates to the Kettle Creek Assessment Report and Source Protection Plan.

Examples of tasks in the Section 36 work plan include incorporation of:

- Director's Technical Rule changes
- Transport pathway updates (e.g. consider any identified transport pathways for incorporation into the Assessment Report and Source Protection Plan)
- Climate change considerations (e.g. review and assess potential climate change additions to the technical framework and make appropriate updates to the Assessment Report and Source Protection Plan.

The tasks identified in the s.36 workplan are in the process of being incorporated into a s. 36 Kettle Creek Source Protection Plan update. The plan update is

expected to be completed and submitted to the Ministry for review and approval in 2023.

## 10. More from the Watershed

To learn more about the Kettle Creek Source Protection Area, visit the [Lake Erie Source Protection website](#).