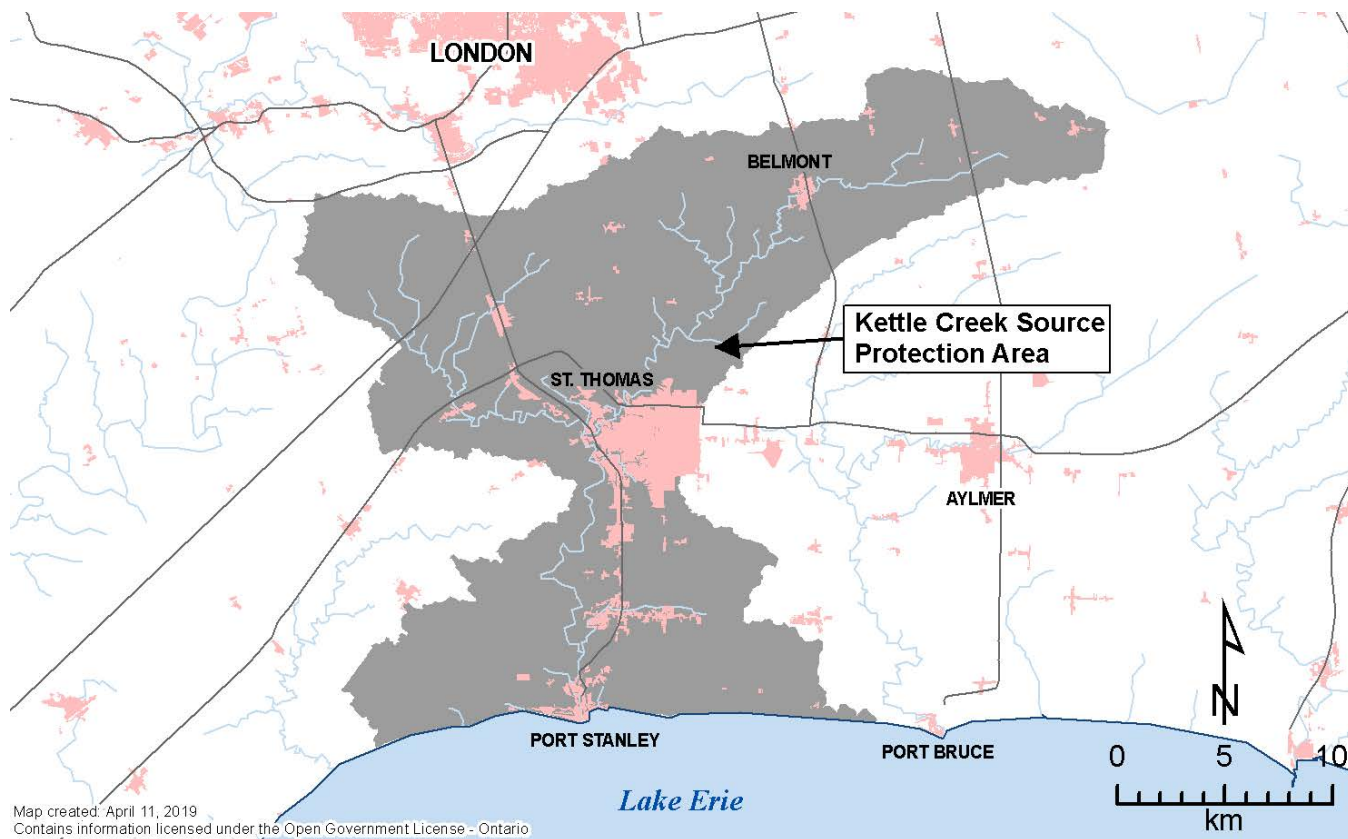


# Source Protection Annual Progress Report

## I. Introduction

This annual progress report outlines the progress made in implementing the source protection plan for the Kettle Creek Source Protection Area, as required by the Clean Water Act and regulations.

We acknowledge and recognize the tremendous efforts made by our local municipality, stakeholders and Source Protection Committee in the development of the Source Protection Plan and implementation of Source Protection policies.



## II. A message from your local Source Protection Committee

- P : Progressing Well/On Target – The majority of the source protection plan policies have been implemented and/or are progressing.**
- S : Satisfactory – Some of the source protection plan policies have been implemented and/or are progressing.
- L : Limited progress – A few of source protection plan policies have been implemented and/or are progressing.

Only two existing significant drinking water threats were identified in the Kettle Creek Source Protection Area when the Plan took effect. Since implementation of the plan, both threats (100%) have been addressed: one no longer exists and the other was managed through a Risk Management Plan (RMP). Additionally, all legally-binding plan policies that address significant drinking water threats are either implemented, in progress or implemented because policy outcomes have been evaluated and require no further action(s).

### III. Our Watershed

To learn more, please read our assessment report(s) and source protection plan(s)

The Kettle Creek Source Protection Area (watershed) includes Kettle Creek and its tributaries. They drain 520 square kilometres of agricultural and urban lands before entering Lake Erie at Port Stanley. The area includes parts of Elgin County, Middlesex County, the City of St. Thomas, and the City of London.

The watershed has two municipal drinking water systems: a well in Belmont and the Elgin Area Primary Water Supply System (EAPWSS) in Port Stanley.

Only two significant drinking water threat activities were identified in the Kettle Creek Source Protection Area when the plan went in to effect. Since that time, both threats have been addressed.

## IV. At a Glance: Progress on Source Protection Plan Implementation

### 1. Source Protection Plan Policies

P: Progressing Well/On Target

All of the legally-binding plan policies (100%) that address significant drinking water threats are implemented, in progress or the policy is implemented because outcome(s) have been evaluated and require no further action(s).

### 2. Municipal Progress: Addressing Risks on the Ground

Three municipalities (Malahide, Central Elgin and Thames Centre) in the Kettle Creek Source Protection Area have vulnerable areas where significant drinking water threat policies apply.

P: Progressing Well/On Target - Municipalities in the Kettle Creek Source Protection Area are required to review and update their Official Plan to ensure it conforms with the Kettle Creek Source Protection Plan the next time they undertake an Official Plan review under the Planning Act. All three municipalities have amended their Official Plan to conform with the Kettle Creek Source Protection Plan.

### 3. Septic Inspections

Not applicable to the Source Protection Area.

### 4. Risk Management Plans

P: Progressing Well/On Target

In the previous calendar year, no risk management plans were established in the Kettle Creek Source Protection Area. Since our source protection plan took effect, one risk management plan has been established.

One inspection has been carried out or planned by a Risk Management Official/Inspector for prohibited or regulated activities. There is a 100% compliance rate with the risk management plan established in the Kettle Creek Source Protection Area.

## 5. Provincial Progress: Addressing Risks on the Ground

P: Progressing Well/On Target

Ontario ministries are reviewing previously issued provincial approvals (i.e., prescribed instruments, such as environmental compliance approvals under the Environmental Protection Act) where they have been identified as a tool in the Kettle Creek Source Protection Plan to address existing activities that pose a significant risk to sources of drinking water. The provincial approvals are being amended or revoked where necessary to conform with plan policies. The Kettle Creek Source Protection policies set out a timeline of 3 years to complete the review and make any necessary changes. The ministries have completed this for 100% of previously issued provincial approvals in the Kettle Creek Source Protection Area.

## 6. Source Protection Awareness and Change in Behaviour

Education and outreach efforts targeting the Municipality of Central Elgin's recreational boating community has led to increased public awareness about the municipal drinking water supply and the need to be responsible with bilge water.

## 7. Source Protection Plan Policies: Summary of Delays

Not applicable to the Kettle Creek Source Protection Area.

## 8. Source Water Quality: Monitoring and Actions

In the Kettle Creek Source Protection Area, no issues have been identified in our local science-based assessment report(s) regarding the quality of the source(s) of municipal drinking water.



## 9. Science-based Assessment Reports: Work Plans

An order was received from the Ministry on July 22, 2019 regarding the Section 36 workplan for updates to the Kettle Creek Assessment Report and Source Protection Plan.

Examples of tasks that are included in the Section 36 workplan:

- technical rule changes, e.g., review and consider Phase II Technical Rule changes for incorporation into the assessment report and source protection plan
- transport pathway changes, e.g., consider any identified transport pathways for incorporation into the assessment report and source protection plan
- climate change considerations, e.g., review and assess potential climate change additions to the technical framework and make appropriate updates as applicable to the assessment report and source protection plan

## 10. More from the Watershed

To learn more about the Kettle Creek Source Protection Area, visit <http://www.sourcewater.ca>.