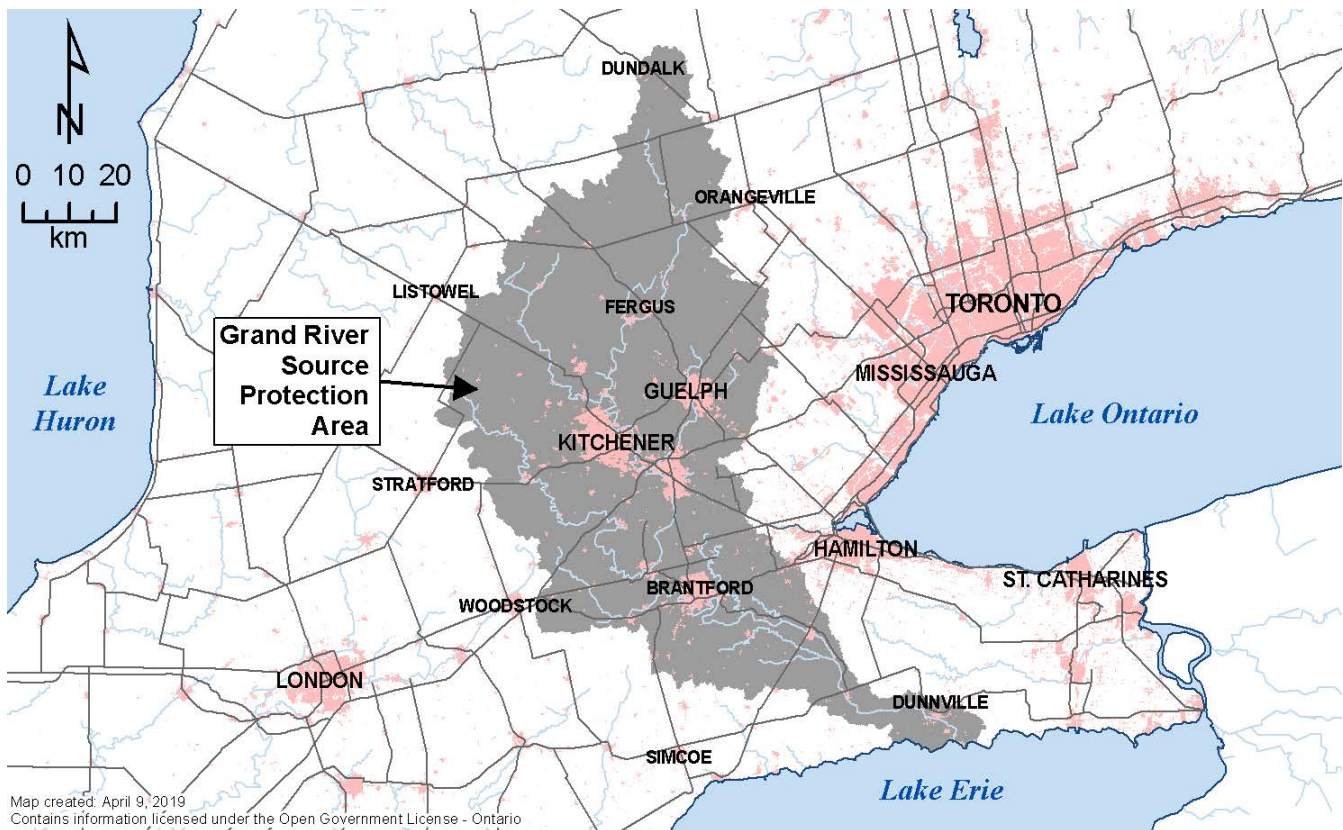


# Source Protection Annual Progress Report

## I. Introduction

This annual progress report outlines the progress made in implementing the source protection plan for the Grand River Source Protection Area, as required by the Clean Water Act and regulations.

We acknowledge and recognize the tremendous efforts made by our local municipality, stakeholders and Source Protection Committee in the development of the Source Protection Plan and implementation of Source Protection policies.



## II. A message from your local Source Protection Committee

- P : Progressing Well/On Target – The majority of the source protection plan policies have been implemented and/or are progressing.**
- S : Satisfactory – Some of the source protection plan policies have been implemented and/or are progressing.**
- L : Limited progress – A few of source protection plan policies have been implemented and/or are progressing.**

7449 significant drinking water threats were identified in the Grand River Source Protection Area when the Plan took effect. The percentage of overall progress made in addressing threats is 19%. Additionally, 1320 threats have been removed through field verification. The percentage of overall progress made is likely a reflection of progress for municipalities that have a large number of significant threats. For these municipalities, implementation may be phased over many years given the large number of properties and limited staff resources. Some municipalities have opted to prioritize properties and activities with the highest potential for impact. Ninety-six percent of legally binding plan policies that address significant drinking water threats are implemented or in progress, or determined to require no further action(s).

### III. Our Watershed

To learn more, please read our assessment report(s) and source protection plan(s)

The Grand River Source Protection Area (watershed) covers an area of approximately 6,800 square kilometres, and contains 39 upper, lower and single-tier municipalities and two First Nations bands. The watershed contributes about ten percent of the drainage to Lake Erie.

The residents of the Grand River watershed receive drinking water supplies from both private and municipal supplies. 50 municipal systems and one First Nation system provide water to 865,538 residents in the watershed.

7449 significant drinking water threat activities were identified in the Grand River Source Protection Area when the plan went in to effect. The percentage of overall progress made in addressing threats is 19%. Additionally, 1320 threats have been removed through field verification.

## IV. At a Glance: Progress on Source Protection Plan Implementation

### 1. Source Protection Plan Policies

P: Progressing Well/On Target

The majority (96%) of legally binding plan policies that address significant drinking water threats are implemented or in progress, or determined to require no further action(s).

### 2. Municipal Progress: Addressing Risks on the Ground

Twenty-two municipalities in the Grand River Source Protection Area have vulnerable areas where policies addressing significant drinking water threats apply.

P: Progressing Well/On Target - 29 municipalities in the Grand River Source Protection Area are required to review and update their Official Plan to ensure it conforms with the Grand River Source Protection Plan the next time they undertake an Official Plan review under the Planning Act. Eight Official Plan amendments have been completed, one is under appeal, nine are in process, and eleven have not been started.

### 3. Septic Inspections

P : Progressing Well/On Target

93% of on-site sewage systems have been inspected in accordance with the Ontario Building Code. Results found 63% of the inspections required minor maintenance, e.g., pump-outs and only 6% required major maintenance such as tank replacement.

### 4. Risk Management Plans

P: Progressing Well/On Target

Since the Grand River Source Protection Plan took effect, 82 risk management plans have been established in the Grand River Source Protection Area.

252 inspections have been carried out or planned by a Risk Management Official/Inspector for prohibited or regulated activities. Only one inspection was in non-compliance with the specific contents of the risk management plan.

## 5. Provincial Progress: Addressing Risks on the Ground

P: Progressing Well/On Target

Ontario ministries are reviewing previously issued provincial approvals (i.e., prescribed instruments, such as environmental compliance approvals under the Environmental Protection Act) where they have been identified as a tool in the Grand River Source Protection Plan to address existing activities that pose a significant risk to sources of drinking water. The provincial approvals are being amended or revoked where necessary to conform with plan policies. The Grand River Source Protection policies set out a timeline of 3 years to complete the review and make any necessary changes. The ministries have completed this for 99% of previously issued provincial approvals in the Grand River Source Protection Area.

## 6. Source Protection Awareness and Change in Behaviour

21 Drinking Water Protection Zones signs have been installed in the Grand River Source Protection Area.

The following positive outcomes have been reported by municipalities in the Grand River Source Protection Area:

- increased public knowledge about threats to local drinking water sources, particularly rural property owners
- reduction in chloride concentration in a well due to changes in salt storage
- Industrial plant switched the use of petroleum-based lubricant to vegetable oil
- new requirement to have Drinking Water Threat Disclosure Report in wellhead protection areas where significant drinking water threats may be present
- Increased involvement with local Development Review Committee to build relationships with potential business to evaluate source protection impacts

## 7. Source Protection Plan Policies: Summary of Delays

Delays in implementing source protection plan policies have been noted in the County of Brant, County of Dufferin, Region of Waterloo and City of Brantford.

Summary of rationale for delays include:

- existing policy being revised through ongoing S.34 update and will therefore change in the near future
- policy has been evaluated and determined that the type of action outlined in the policy is not the best approach given the number of identified significant drinking water threats
- time constraints
- delay of policies due to priority of others

## 8. Source Water Quality: Monitoring and Actions

There are 14 drinking water systems in the Grand River Source Protection Area with identified drinking water issues.

Municipalities have monitoring and treatments systems in place to ensure that municipal drinking water meets the requirements under Safe Drinking Water Act, 2002.

Two system are no longer being monitoring as issue has improved and three systems report decreasing concentrations/trends. For those systems where there are no improvements, municipalities will continue to collect data to monitor the issues.



## 9. Science-based Assessment Reports: Work Plans

No workplans were required to be implemented for the Grand River Assessment Report.

## 10. More from the Watershed

To learn more about the Grand River Source Protection Area visit,  
<http://www.sourcewater.ca>