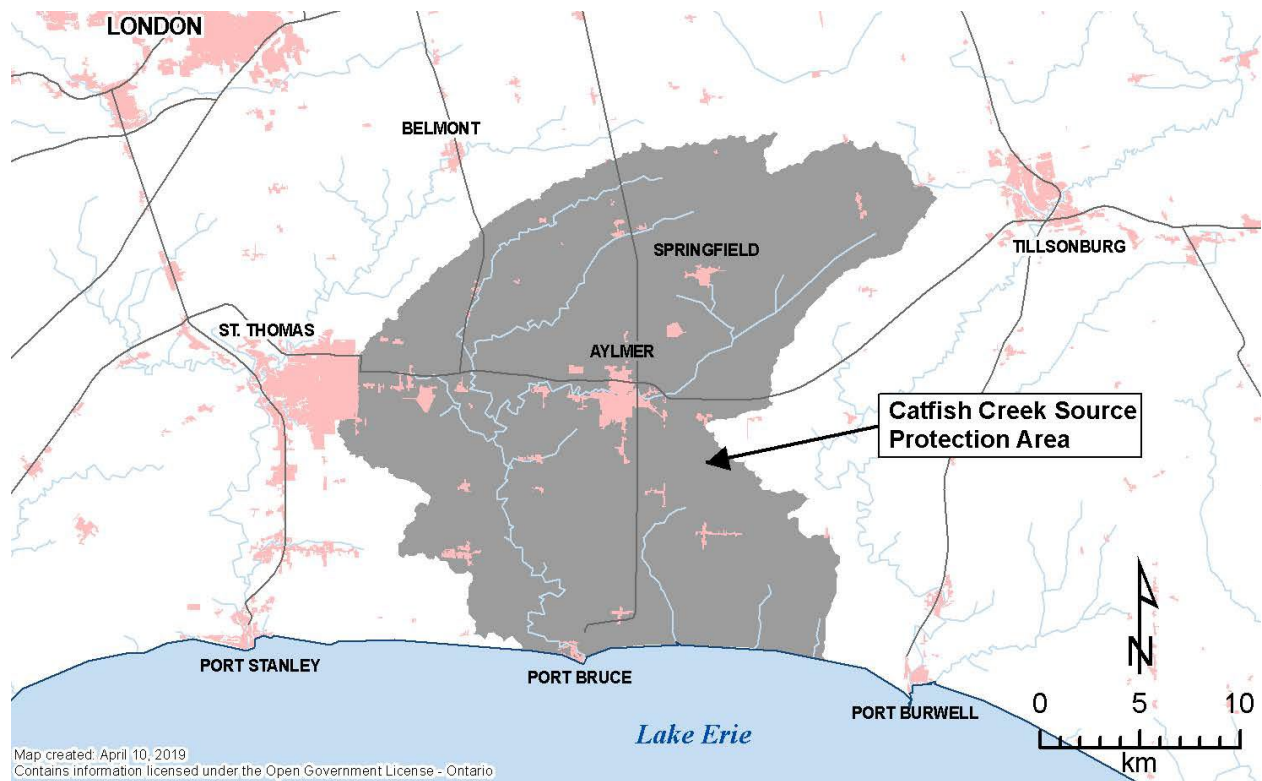


Catfish Creek Source Protection Annual Progress Report 2022

I. Introduction

This annual progress report outlines the progress made in implementing our Source Protection Plan for the Catfish Creek Source Protection Area, as required by the Clean Water Act and regulations.

We acknowledge and recognize the tremendous efforts made by our local municipalities, stakeholders, and Source Protection Committee in the development of the Source Protection Plan and implementation of source protection policies.



II. A message from your local Source Protection Committee

P: Progressing Well/On Target – The majority of the source protection plan policies have been implemented and/or are progressing.

Twenty existing significant drinking water threats have been identified in the Catfish Creek Source Protection Area since the Source Protection Plan came into effect, and 100% of these have been addressed. All legally-binding plan policies that address significant drinking water threats are implemented or in progress.

III. Our Watershed

To learn more, please read our Catfish Creek Assessment Report and Source Protection Plan.

The Catfish Creek Source Protection Area (watershed) includes Catfish Creek and its tributaries. These watercourses drain 490 square kilometres of agricultural and urban lands before entering Lake Erie at Port Bruce. The area includes parts of Elgin and Oxford counties.

The watershed has one municipal drinking water system in the village of Brownsville in the Township of Southwest Oxford. The system is comprised of two wells serving about 300 people. A number of communities are also serviced with municipal water from the Elgin Area Primary Water Supply.

IV. At a Glance: Progress on Source Protection Plan Implementation

1. Source Protection Plan Policies and Addressing Significant Risks

P: Progressing Well/On Target

All of the legally-binding policies (100%) that address significant drinking water threats are implemented or in progress.

2. Municipal Progress: Addressing Risks on the Ground

P: Progressing Well/On Target

One municipality (Oxford County) in the Catfish Creek Source Protection Area has vulnerable areas where significant drinking water threat policies apply.

Oxford County completed the review and update of their Official Plan in 2022 to ensure it conforms to the Catfish Creek Source Protection Plan.

3. Septic Inspections

P: Progressing Well/On Target

In the Catfish Creek Source Protection Area, there are nine on-site sewage systems that require inspections every five years in accordance with the Ontario Building Code. All nine systems have been inspected by the local municipality for the 2021–2025 cycle. None of the nine sewage systems inspected required any maintenance work.

4. Risk Management Plans

P: Progressing Well/On Target

One risk management plan has been negotiated in the Catfish Creek Source Protection Area since the Source Protection Plan came into effect. There are currently no risk management plans needed or pending.

In 2022, four inspections were carried out for activities prohibited under section 57 of the Clean Water Act. One inspection was carried out for an activity requiring a risk management plan under section 58. All activities inspected were found to be in compliance with Part IV policies.

5. Provincial Progress: Addressing Risks on the Ground

P: Progressing Well/On Target

Ontario Provincial ministries including Ministry of the Environment, Conservation and Parks (MECP), Ministry of Natural Resources and Forestry (MNR), Ministry of Transportation Ontario (MTO) and Ontario Ministry of Agriculture, Food and Rural Affairs (OMAFRA) implement source protection policies that use prescribed instruments to manage significant threat activities.

Ontario ministries review applications for new or amended provincial approvals (i.e., prescribed instruments, such as Environmental Compliance Approvals issued under the Environmental Protection Act) where they have been identified as a tool in the Catfish Creek Source Protection Plan to address activities that pose a significant risk to source water. The Province has established Standard Operating Policies to ensure that approvals take into account the science generated through the Drinking Water Source Protection Program and policies in the Source Protection Plan. Provincial approvals are issued, denied, amended, or revoked to conform to plan policies. Where necessary, conditions are added to

approvals to ensure that the activity does not pose a significant threat to sources of drinking water.

The Ministries have reported 100% completion of previously issued Provincial approvals in the Catfish Creek Source Protection Area.

6. Source Protection Awareness and Change in Behaviour

Oxford County has noted a change in the behaviour of people in the community, including a decrease in apprehension when discussing the Source Water Protection Program. This seems to indicate a better baseline understanding of what the Source Water Protection program is and what the goals are.

7. Source Protection Plan Policies: Summary of Delays

Not applicable to the Catfish Creek Source Protection Area.

8. Source Water Quality: Monitoring and Actions

No issues have been identified in the local science-based assessment report regarding the quality of the source(s) of municipal drinking water in the Catfish Creek Source Protection Area.

9. Science-based Assessment Reports: Work Plans

An order was received from the Ministry on July 19, 2019 regarding the Section 36 workplan for updates to the Catfish Creek Assessment Report and Source Protection Plan.

Examples of tasks in the Section 36 workplan include incorporation of:

- Director's Technical Rule changes
- Transport pathway updates (e.g. consider any identified transport pathways for incorporation into the Assessment Report and Source Protection Plan)
- Climate change considerations (e.g. review and assess potential climate change additions to the technical framework and make appropriate updates to the Assessment Report and Source Protection Plan).

The tasks identified in the s. 36 workplan are in the process of being incorporated into a s. 36 Catfish Creek Source Protection Plan update. The plan update is expected to be completed and submitted to the Ministry for review and approval in 2023.

10. More from the Watershed

To learn more about the Catfish Creek Source Protection Area, visit the [Lake Erie Source Protection website](#).